

Douglas County Surveyor's Record of  
Government Corners Renewed

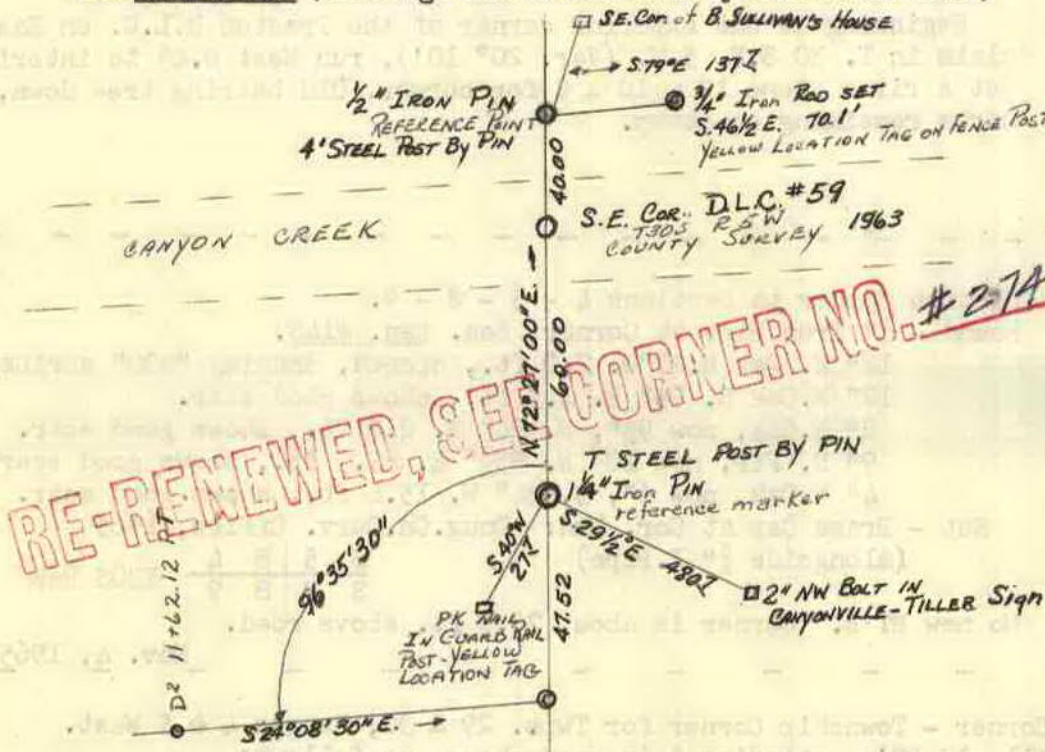
T. 30 S. T. S. R. 5 W. R. W. W. M.

KOKE-CHAPMAN CO., EUGENE, ORE. 21881

240

Reference to S. E. Corner D. L. C. No. 59.  
See ~~Ren-#224~~. (Bearings are Ore. Co-ord System-South Zone)

Oregon State  
Hwy. Dept.  
April,  
1967  
C. S.  
File  
No. 55/34



MICROFILM TO HERE 10/67

241

1/4 Corner Section 30 only, T30-5W.

This corner set from survey; set at correct N - S distance by proportionate measurement.

Set - Brass Cap at Cor. Mkd: County Surveyor's R T 30 S R  
Office 6 S 30 1/4 5  
1969 W

New BT's: 26" W.Oak S.43°E. 71.0 ft. mkd: 1/4 S30 CS BT.  
9" Laurel S.16°E. 93.20 ft. mkd: 1/4 S30 CS BT.

Note - Steel Fence Post set alongside Brass Cap.  
This corner lies 99.45 ft. south of 1/4 Cor. Sec. 25 only, T30-6W.

242

1/4 Corner to Section 25 only, T30-6W.

This corner set from survey; Set at correct N. - S. distance by proportionate measurement.

Set - Brass Cap at Cor. Mkd: County Surveyor's R T 30 S R  
Office 6 1/4 S 25 5  
1969 W

New BT's: 12" Oak S.26°W. 127.4 ft. mkd: 1/4 S25 CS BT.  
10" W.Oak S.82°W. 262.6 ft. mkd: 1/4 S25 CS BT.

Note - 5' Steel Fence Post set alongside Brass Cap  
This corner lies 99.47 ft. north of 1/4 cor. S30, T30S R5W.

243

Section Corner to Section 24 and 25 only, T30-6W.

Set this corner from survey; at correct distance N - S by proportionate measurement.

Set - Brass Cap at Sec. Cor. Mkd: County Surveyor's R #324 T30 S R  
Office 6 S 24 5  
1969 W S 25 W

Bearing Objects: No trees in proper sections available within reason.  
3/4" Iron Rods West 15.0 and 20.0 ft.  
Steel Fence Post south 53.38 ft.

Steel Fence Post south at Sec. Cor. 19 & 30, T30-5W.  
This corner lies 106.77 ft. north of Secs. 19 & 30, T30-5W.

RE-RENEWED, SEE CORNER NO. #274

JAMES W. BYRON, CO. SURVEYOR  
John M. Powell and Crew  
Jan. 23, 1969  
C.S. File No. 54/77