

Douglas County Surveyor's Record of
Government Corners Renewed

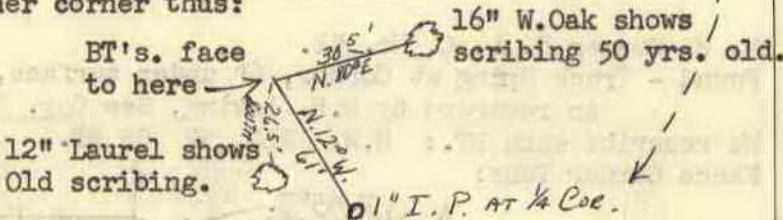
T. 30 S. T. S. R. 5 W. R. W. W. M.

KOKE-CHAPMAN CO., EUGENE, ORE. 21001

Fd. O.K. 195
1/4 Section Corner to Sections 18 and 19.

Found - 1" I. Pipe at Corner & under E.-W. Fence.
Now 20" Fir S. 0° 30' W. 7.6 ft., shows scribing on old face.
Do not find any trace of Original BT's. (See Map M 20 - 23)
New BT: 5" W. Oak bears N. 29° E. scribed 1/4 S18 CS BT. (scribed high).
We find BT's. for another corner thus:

2/23/77
NOTE:
THIS CORNER
ERRONEOUSLY RENEWED.
SEE 1969 BLM RESURVEY.
(27)



Fno. B.L.M. B.C. 9/192
R. Brown M115-69

Section Corner to Sections 19 - 20 - 29 - 30. 196

Found - 18", now 20" Maple S. 29° W. 70.1 ft., shows good scribing.
N. E. & S. E. BT's., now stumps. N.W. BT., now down. (See Cor. #67)
Brass Cap at Corner. Old Logging Road is South 40 feet.
New BT's: 7" R. Fir bears N. 2° W. 35.2 ft. scribed S19 T30S R5W CS BT.
10" B. Oak bears N. 19° E. 58.5 ft. scribed S20 CS BT.
7" R. Fir bears S. 54° E. 29.3 ft. scribed S29 T30S R5W CS BT.

Fd. O.K.
by J.H. MARKHAM, Jr.
MAY 24, 1982
M 92-33

James W. Byron, Deputy County Surveyor
Mike Darby and Jim Halterman
October 1963
C. S. File No. 53/26

West 1/4 Section Corner to Section 19, only. 197

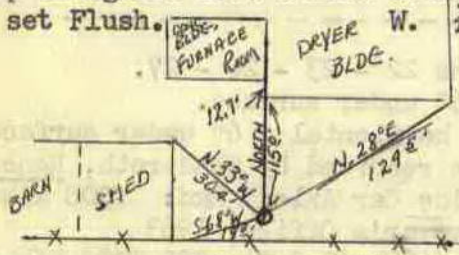
Found - Orig. 12", now 18" B.O. S. 73° E. 27.7 ft., shows scribing.
Orig. 30" Laurel S. 43° E. 25.5 ft., shows scribing. REN #12
18" B. O. S. 85° W. 38.5 ft., shows scar.
Set - Brass Cap at Cor. Mkd: County Surveyor's Office, 1963
T30S R6W W 1/4 S19 R5W
New BT: 20" R. Fir bears S. 9° W. 12.8 ft. scribed W 1/4 S19 CS BT.

N. W. Corner D1 L. C. No. 44. 198

Found - 1" I. Pipe at Corner & at N.-S. Fence Line. (Ren. No. 75)
24" R. Fir S. 78° E. 33.5 ft., shows good scar. S.W. BT. down.
New BT: 10" R. Fir bears S. 32° W. 14.7 ft. scribed NW DLC 44 CS BT.

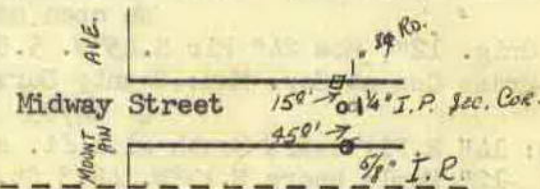
West 1/4 Section Corner to Section 7 only. 199

Found - 2" I. Pipe 24" under. Neither BT. standing.
Do find Roots of N.E. Bearing Tree. (See Ren. No. 27)
Set - Brass Cap alongside I.P. & Mkd: County Surveyor's Office, 1963
Br. Cap set Flush. W. 1/4 S7 T30S R5W & 6W.



Section Corner to Sections 5 - 6 - 7 - 8. 200

Found - 1 1/4" I.P. 3" under surface. Do not find Axle set by Frear. (See Ren. No. 40)
Note - See "Midway Tracts" for Location of this Corner.
No Trees near.



Corner to Sections 12 and 13, T30-6W. & 201

Found - 1" I.P. 15" under surface at Corner.
Both BT's. as recorded by B.B. Irving, (Map File M 20 - 23)
6", now 18" B. Oak (stool) shows scar. We rescribe S13 T30S R6W CS BT., bears S. 80 1/2° W. 38.1 feet.
Set - 3/4" Iron Rod alongside I. Pipe & 3" above surface.