

Douglas County Surveyor's Record of
Government Corners Renewed

T. 30 S. T. S. R. 4 W. R. W. W. M.

ROKE-CHAPMAN CO., EUGENE, ORE. 21991

219

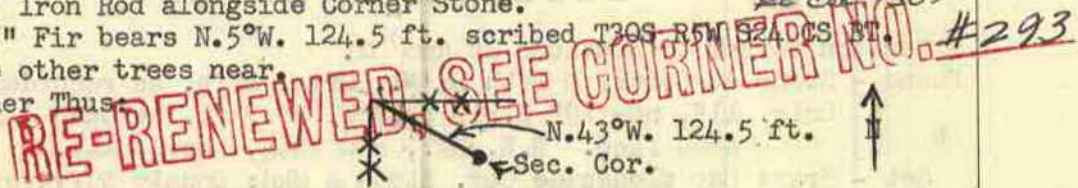
1/4 Corner to Sections 19 and 20.
Found - Stone & I. Pipe at Corner. All Three BT's., now down.
Pine to S.W. shows scribing. *SEE COR. # 107*
New BT's: 10" Pine S.62°W, 54.3 ft. scribed 1/4 S19 CS BT.
12" Fir N.31°E. 57.2 ft. scribed 1/4 S20 CS BT.
Note - Fence E. W. & S. from corner.

220

Southeast Corner D. L. C. No. 37. *SEE COR. # 104*
Found - I. Pipe at Corner - N.W. BT. burned - West BT. dead.
New BT's: 12" Laurel S.78°E. 51.5 ft. scribed SE DLC 37 CS BT.
12" Laurel S.25°W. 52.0 ft. scribed SE DLC 37 CS BT.

221

Section Corner to Secs. 19 & 30, T30-4W. & Secs. 24 & 25, T30-5W.
Found - Stone at Corner & all BT's. as recorded, all are now snags. *SEE COR. # 105*
Set - 3/4" Iron Rod alongside Corner Stone.
New BT: 15" Fir bears N.5°W. 124.5 ft. scribed T30S R5W S24DCS BT.
No other trees near.
Fence Corner Thus:



222

1/4 Corner to Sections 19 and 30.
Found - 1" I.P. in mound of Stone at Corner. *SEE COR. # 103*
Stumps of all BT's. cut low. No scribing found.
Orig. N.E. BT., now burned snag, shows burned face.
New BT's: 6" Maple bears S.25°W. 64.7 ft. scribed 1/4 S30 CS BT.
12" Fir bears N.22°W. 69.8 ft. scribed 1/4 S19 CS BT.
Note - Old Fence Corner Thus:



223

1/4 Corner to Sec. 30, T30-4W. & Sec. 25, T30-5W.
Found - Axle in N-S Fence Line. Orig. 40" W.Oak S.0°30'W. 264.0 ft.,
This BT. is now covered by road fill above any scribing.
Checks bearing & distance to Rock Mound & old rotted Oak
scribed Stake. Using S.30°W. 264.0 ft., not S.0°30'W. as
per record. This condition was found by J. Markham, See
Renewal No. 80.
No trace of Orig. S.E. BT.
Find Axle in Wire Fence - Drive Axle in ground 0.5 ft. W. of fence.
New BT: 5" W.Oak bears S.45°W. 162.0 ft. scribed 1/4 S25 CS BT.
16" B.O. bears S.23°E. 258.0 ft. scribed 1/4 S30 CS BT.

Find OK
5/91 M/13-18

224

Section Corner to Sections 16 - 17 - 20 - 21.
Found - Gun Barrel at Cor. & All BT's. as recorded, except 9" Fir
N.9°W. 36.0 ft. (See Cor. No. 133) which is now snag.
New BT: 20" B.Oak bears N.85°W. 73.3 ft. scribed S17 T30S R4W CS BT.
Note - Logging Road 90 ft. West of Corner.

225

1/4 Corner to Sections 17 and 20.
Found - Orig. 15", now 30" R.Fir N.40°E. 19.1 ft. We open & find good scribng.
Original Southwest BT., not found.
Set - Brass cap at Cor. Mkd: County Surveyor's 1/4 S17 T30S R4W
Office, 1963 S20
New BT's: Rescribe, now 30" R.Fir N.40°E. 19.0 ft. 1/4 S17 CS BT.
9" Maple bears S.31°W. 20.8 ft. scribed 1/4 S20 CS BT.

August 1963

James W. Byron, Deputy County Surveyor
Mike Darby and Wm. Stoffel
July 1963
C. S. File No. 53/26