

Douglas County Surveyor's Record of
Government Corners Renewed

30 T. S. 2 R. W. W. M.

KOKE-CHAPMAN CO. EUGENE, ORE. 21881

John H. Markham, Jr.
Witness: R. G. Boyd
For Stomar Lumber Co.
April 29, 1959
C. S. File No. 42/421

S. W. Corner Section 11. 42
As determined by O.B.T.'s.
32" Fir Uproot, bears N.84°E. 4.6 ft. dist. O.B.T., fd. scribe.
30" Fir N.14°W. 51.5 ft. dist. O.B.T.
At Corner Point found Stone and Set $\frac{3}{4}$ " x 30" Iron Pipe from which:
4" La. bears N.43°W. 19.4 ft. dist. mkd. S10 T30S R2W B.T.
11" Fir bears N.33°E. 13.0 ft. S11 B.T.
11" La. bears N.53°E. 33.0 ft. dist. mkd. S11 T30S R2W B.T.
8" Fir bears S.57°E. 25.0 ft. mkd. S1041 B.T.
S. C. $\frac{15}{14}$ bears West 115.0 ft.

N. W. Corner Section 14. 43
As determined by O. B. T.'s.:
40" Pine Stump(logged) bears S.74°W. 17.8 ft. dist., fd. scribe O.B.T.
32" Fir S.48°E. 56.7 ft. dist. O.B.T.
At Corner Point found Stone and Set 1" x 30" Iron Rod from which:
12" Maple bears S.55°W. 66.0 ft., slope dist. mkd: S15 X B.T.
8'x 8'x 15' high, rock out crop bears S.48°W. 68.0 ft., slope dist.
6" Fir N.56°W. 8.5 ft. mkd. S10 R2W B.T.
6" Fir N.63°E. 13.3 ft. mkd: S10 T30S B.T.
5" La. S.60°E. 32.5 ft. mkd. S14 T30S R2W B.T.
S. C. $\frac{10}{11}$ bears East 115.0 ft. distance.

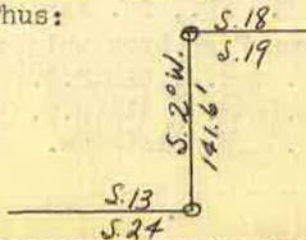
James W. Byron, Deputy
Milo Godfrey
C. Putnam - July 3, 1959
C. S. File No. 49/86

Section Corner to Sections $\frac{14}{23} \mid \frac{13}{24}$ 44
Found - All 3 BT's., as recorded by B.B.I., 1940. Distances to BT's. are O.K. I find Bearings thus: - REN.#21
16" Oak, record N.55 $\frac{1}{2}$ °W., I find to be N.51°W.
14" Oak, record N. 2° E., I find to be N. 4°E.
24" Fir, record S.74°W., I find to be S.76°W.
Note - Corner in Field. I do not Set Brass Cap. I do mark B. O. chisled 2" x 2" + on top of 2' x 4' x 1' Sandstone which is also in field, bears $69\frac{1}{2}$ °E. 46.6 ft.

$\frac{1}{4}$ Section Corner to Sections 23 & 24. 45
Found - 8", now 10" W. Oak scribed by B.B.I., 1940, shows good Scribing "S CS" N.15 $\frac{1}{2}$ °W. 87.2 ft. - REN.#5
Do Not find Stones Set for Corner. This area in Wash, BT. & Corner may have been washed out. **VOID SEE B.L.M. BRASS CAP DATED 1963**
Set Witness Corner for $\frac{1}{4}$ Corner. Brass Cap Mkd: 100' South to Wit. Cor. $\frac{1}{4}$ S23/S24 T30S R2W County Surveyor's Office, 1959. **180 ALSO e.s. 55/52**
New BT's: 15" Pine bears N. 61°E. 47.1 ft. scribed WC $\frac{1}{4}$ S24 CS BT.
10" W.O. bears S. 55°W. 28.3 ft. (This is BT. scribed by B.B.I. for $\frac{1}{4}$ Cor., I scribe WC facing Wit. Cor.)

James W. Byron, Deputy
Milo Godfrey
Clete Putnam
Feb. 4, 1960
C.S. File No. 49/86

Renew $\frac{S18}{R3W} \mid \frac{T30W}{S19} \mid \frac{Closing}{R2W} \mid \frac{Corner}{}$ 46
Found - Orig. 24", now 28" Fir, Stump S.55 $\frac{1}{2}$ °E. 18.5 ft. I open & find good scribing "S T30".
No trace of Orig. NE BT. found.
Find old scribed stake at corner. - REN.#24
Set Brass Cap at corner Mkd: County Surveyor's Office, 1960 $\frac{S18}{R3W} \mid \frac{T30S}{S19} \mid \frac{CC}{R2W}$
New BT's: 16" R.Fir bears S.66 $\frac{1}{2}$ °E. 37.5 ft. scribed S19 T30S R2W, CS BT.
12" Cedar bears N.14°E. 34.0 ft. scribed S18 T30S R2W CS BT.
Note - Corners Thus:



SEE ALSO
CORNER No. 70