

Douglas County Surveyor's Record of
Government Corners Renewed

29 T. S. 7 R. W. W. M.

KOKE-CHAPMAN CO., EUGENE, ORE. 21881

103

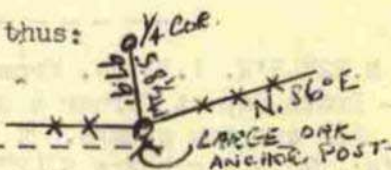
$\frac{1}{4}$ Corner to Sections 2, T29-7W. & Sec. 35, T28-7W.
Found - Boyer's scribed Stake at corner, down, and both BT's. thus:
12", now 12" R.Fir shows good scar.s N.35°E. 2.5 ft.
15", now 19" R.Fir, shows good scar S.45°E. 12.0 ft.
Set - Brass Cap at Corner Mkd: County Surveyor's $\frac{1}{4}$ S35 T28S
Office, 1961 S 2 T29S R7W

James W. Byron, Deputy
Milo Godfrey & Clete Putnam
May & June 1961
C. S. File No. 49/50

104

$\frac{1}{4}$ Section Corner to Sec. 1, T29-7W. & Sec. 36, T28-7W.
Found - Both BT's. recorded by Eppstein: 18", now 20" Fir
Stump N E. 31.0 ft., shows good bark scribing "BT".
16", now 18" Fir Stump S.47°W. 15.0 ft., shows old axe
work. Cut too low, no scribing found. - REN. #176
Set - Brass Cap at Corner Mkd: County Surveyor's $\frac{1}{4}$ S36 T28S
Office, 1961 S 1 T29S R7W

No Trees near for Bearing Trees.
To Angle in Fence Corner located thus:



Corner $\frac{1}{4}$ S36 | S31 T29S
R7W S 1 | S 6 R6W T30S
Found - All Bearing Trees as recorded by Markham, 1956.
We do not find Bolt set at corner. See Corner No. 80.
Set - Brass Cap at Cor. Mkd: County Surveyor's S36 | S31 T29S
Office, 1962 R7W S 1 | S 6 R6W T30S
Note - We find Stone N.20°W.1.5 ft. from corner that may have
been set for corner.

RE-RENEWED, SEE CORNER NO. #276

105

$\frac{1}{4}$ Corner to Sec. 25, T29-7W. & Sec. 30, T29-6W.
Found - Stone at Cor. & in place as recorded, except we do find
+ on top & $\frac{1}{4}$ Mkd: on East face, not West face. - REN. #42
Both BT's., as recorded by B.B.I., now stumps, down &
out of place.
Set - Brass Cap alongside Corner Stone & Mkd: County Surveyor's
 $\frac{1}{4}$ S25/S30 T29S Office, 1962
R7W R6W
New BT's: 21" R.Fir bears N.49°E. 71.5 ft. scribed $\frac{1}{4}$ S30 CS BT.
8" R.Fir bears N.29°W. 116.1 ft. " $\frac{1}{4}$ S25 CS BT.

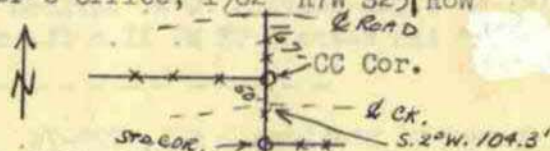
James W. Byron, Deputy County Surveyor
Dale McFarland and John Powell
April 1962
C. S. File No. 49/139

106

Closing Corner for Sections 24 and 25.
Found - Corner Stone with "C" chiseled on face. We find corner
stone at base of fence corner post and out of ground. - REN. #43
Do Not find N.W. BT. This area in yard. We check record
bearing S.2°W. (See B.B.I. Survey) & record dist. to
standard corner $\frac{1}{4}$ S19
S30

Set - Brass Cap at Fence Corner & Mkd: CC S24 | T29S
County Surveyor's Office, 1962 R7W S25 | R6W

Fence Corner thus:



New BT: 9" Maple bears S.64°W. 22.6 ft. scribed CC S25 CS BT.

SEE
M 1-27

107

Standard Corner for Sections 19 and 30, T29-6W.
Found - Yewwood Anchor Post, See B.B.I. Survey, & see renewal above.
We do not find Original BT's.
Set - Brass Cap along West Edge of Anchor Post & Mkd:
County Surveyor's Office S19 T29S
1962 R7W S30 R6W
New BT's: 10" R.Fir bears S.88 $\frac{1}{2}$ °E. 101.5 ft. scribed S30 T29S R6W CS BT.
5" Maple bears N.15°E. 41.3 ft. scribed S19 CS BT.

Fd. OK
H. J. AND STONE
8/89 M101-60

SEE M 1-27