

Douglas County Surveyor's Record of  
Government Corners Renewed

T 29 T. S. R 5 R. W. W. M.

ROKE-CHAPMAN CO., EUGENE, ORE. 21891

197

Witness Corner for the SW Cor. DLC #42

Found - An original 16" x 12" x 10" sandstone marked "42" on top.

A 3/4" I. Pipe bears North 15 ins. dist. from center of stone.  
Set - A 1" x 36" I. Pipe with brass cap on cardinal direction of South  
82 ft. from SW corner of DLC 42. Marked cap "Douglas County  
Surveyor" Wit. Cor. SW cor. lies in path of  
future drainage ditch.

SW cor ↑  
DLC 42 R5W  
N. 82 ft.  
1979

New BT's-A 13" Ash bears N.78°E, 107.5 ft. dist. bark scribed "WC  
SW DLC 42 CS BT"

A 16" Ash bears S.48°E., 142.5 ft. dist. barked scribe "WC  
SW DLC 42 CS BT".

Note: Public Works request. To preserve SW Cor DLC 42, T.29S, R.5 W.  
1/2/79

SW Cor DLC 47; Ext. L. DLC 46 in Sec. 26

Found - No monument found. Found hole in ground believe this to be  
position of Byron's 1962 monument as it was reported found  
by Ruppert in 1977 on M 66 - 66. See Renewals #38 and 129A  
Orig. 14" Black Oak tears N.65°E., 153.4 ft. (Rec. 151.8 ft.) Tree  
now a 36" diam. with rotted center with partially healed previ-  
ously opened blaze. Found reverse scribe mark "B" which we  
replaced in rotted out center of tree.

A 14" now 15" trunk of forked white oak measuring 12" x 28" at  
base bears S.71 1/2°E., 85.4 ft. (Rec. S.70 3/4°E) Tree has  
faint double blaze.

Note: Found brass cap at location as determined by Byron 1962 (of DCSO  
records M 23 - 35 Ren. #150) bears N.80 1/2°W., 113.4 ft. Byron  
records N.80 1/2°W, 113.13 ft. and original records show corner  
at N.82 1/2°W., 113.1 ft. to 1/4 S27 and S26.

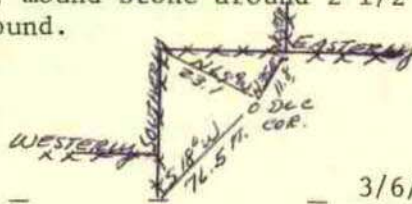
Set - We set a 1" x 30" Gal. I.P. with attached brass cap at above  
recorded position. Cap is marked: Douglas Co. Surveyor  
T 29 S R 5 W

DLC 45 DLC 47  
DLC 46

1979

Set cap flush with ground, mound stone around 2 1/2 foot diameter  
at base 1/2 foot above ground.

No new accessories.



3/6/79

199

1/4 Corner for Secs. 31 and 32.

Found - A 12" x 18" x 22" conglomerate stone marked "1/4" on south  
face. (X was rec. Ren. #46, 131, origin unknown).

A 1 in. I.P x 30" I. Pipe buried 26 in. in the ground bears  
east, 0.96 ft. dist. from stone. (M 1-35)

An orig. 18" B. Oak now 36" with well healed single blaze  
bears S.15°E., 15.2 ft.

An orig. 30" B. Oak, now down and badly rotted bears N.60°W.,  
45.5 ft.

An 8" W. Oak now 10" with well healed double blaze bears N.59°W.,  
57.5 ft.

Set - A 1" x 36" I. Pipe with brass cap stamped "Douglas County Surveyor  
T29S R5W S31 S32 1/4 1979, at corner position as determined from  
orig. 36" B. Oak. I Set fd. stone on north side of cap and I.P.  
on south side of cap.

New BT - A 28" diam. B. Oak scribed "1/4 S31 CS BT" in a double blaze  
bears S.31°W., 54.1 ft. dist.

Corner lies in a N-S fence 14 ft. North of fence corner.

10/11/79

Karen Reed  
S.J. Flause  
Doug. Co. Surveyors  
Office  
Jan. 2, 1979  
C.S. 60/24

SEE Ren. #221  
FOR DLC CHANGER

1-79

Doug. Co. Surveyors  
Office

Gary L. Langlitz  
L. E. Monrean  
F.C. Silagy  
S. J. Flause  
March 6, 1979  
C.S. 60/24

FD. B.C. 4/92  
J. BETMAN  
M115-20  
Book 4/99  
W. Ruppert  
M112-71

Karen Reed  
Doug. Co. Surveyors  
Office  
P. Earle  
Oct. 11, 1979  
C.S. 60/34

RE-RECORDED RECORDED NO. #231