

Douglas County Surveyor's Record of
Government Corners Renewed

T. 29 S. T. S. R. 5 W. R. W. W. M.

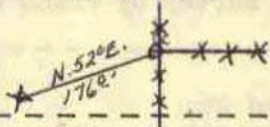
KOKE-CHAPMAN CO., EUGENE, ORE. 21881

156

Section Corner to Sections 26 - 27 - 34 - 35.
Found - 5" + on Rock S. 74° W. 61.2 ft. - *Ren. #100*
Southeast Corner foundation N. 36° W. 109.1 ft.
Stump of N. E. BT. shows scribing.
 $\frac{3}{4}$ " I.R. at Corner not found.
 $\frac{3}{4}$ " I.R. S. 78° 50' E. 109.7 ft., not found.
Set - Brass Cap at Cor. Mkd: County Surveyor's Office, 1963
S27 | S26 T29S R 5W
S34 | S35
New BT: 20" W. Oak bears S. 71° E. 124.0 ft. scribed S35 T29S R5W CS BT.
Note - Set $\frac{3}{4}$ " I. Rod at Fence Corner Thus: N. 52° E. 176.0 ft.

*FD. B.C. 7/91
N. RUPPERT
11/2-32*

James W.
Byron &
Crew
6/7/63
C. S.
File No.
49/139



157

West 1/16 Corner btwn. Sections 16 and 21.
Set - 5/8" Iron Rod, from which:
10" Oak S. 84° 34' W. 66.6 ft.
12" Oak S. 71° 31' E. 27.5 ft.

By-Glenn
Baughman
For Svedbeck
March, 1966
RM 1 --54

158

West Center 1/16 Corner, Section 21.
Set - 3/4" Iron Rod for W. Center 1/16 corner, from which:
10" B. Oak bears N. 35° E. 5.2 ft. mkd. W.C. 1/16 S21 CS BT.
6" W. Oak bears S. 5° 30' W: 16.1 ft. mkd. W.C. 1/16 S21 CS BT.
APRIL 11, 1967

Doug. County
By James W.
Byron
M 32-78

159

$\frac{1}{4}$ Corner to Sections 21 and 28.
Found - 6" Laurel, now 7", N. 20° W. 53.6 ft., mkd. $\frac{1}{4}$ S21 CS BT.
20" B. Oak, now 14", S. 20° W. 33.0 ft. shows good scar
We do not open. See *Ren. #127*
Found - Brass Cap at $\frac{1}{4}$ Corner set by Co. Surv. Office in 1962
New BT: 6" Laurel S. 49° E. 10.4 ft. mkd. $\frac{1}{4}$ S28 CS BT.

John M.
Powell &
Crew
4/18/67
C.S. File
No. 49/64

MICROFILM TO HERE IO/67

160

*Fd. O.K.
by G. Anson
Dec. 1961
RM 3-52*

Section Corner to Sections 14 - 15 - 22 - 23.
Found - 1 $\frac{1}{2}$ " Iron Pipe at Section Corner, See *Ren. #70*.
15" W. Oak S. 68° 30' W. 58.8 ft., B.T. scribe visible.
New BT: 6" Ash S. 39° E. 2.9 ft. mkd: T29S R5W S23 CS BT.
No other good trees near corner. Dec. 9, 1968
Note - This corner lies 2.0 ft. East of Fence Corner.
Fences run north & west.

J.W. Byron, Co. Surv.
J. Powell & Crew
For. Co. Rd. & Sproul
C.S. File
No. 54/74

161

$\frac{1}{4}$ Corner to Sections 22 and 23.
Found - 1" Iron Pipe at $\frac{1}{4}$ Corner, See *Ren. #58*.
No trace of old Original Bearing Trees
20" W. Oak, now 21", S. 45° W. 71.5 ft., scribe visible.
9" Laurel, now dead, N. 45° E. 32.4 ft.
As notes, $\frac{1}{4}$ sec. corner lies in old fence corner, running N-S & E.
New BT: 20" D. Fir S. 89° E. 57.8 ft. scribed $\frac{1}{4}$ S23 CS BT.

C.
S.
File
No.
54/74

12/12/68

162

Sec. Cor. to Secs. 19 & 30, T29-5W. and Secs. 24 & 25, T29-6W.
Prorated Section Corner.
Set - Brass Cap at Cor. Mkd: County Surveyor's Office, 1969
R T 29 S R
6 S 24 | S 19 5
W S 25 | S 30 W
New BT's: 13" D. Fir S. 40° W. 25.1 ft. mkd: T29S R6W S25 CS BT. #184
14" D. Fir N. 43° W. 30.2 ft. mkd: T29S R6W S24 CS BT.
6" D. Fir S. 56° E. 25.2 ft. mkd: S30 CS BT.
No trees to the N. E. Quad.
Fence Corner running north & west bears N. 15° W. 28.6 ft.

James W. Byron, Co. Surveyor
John M. Powell & Crew
February, 1969
C. S. File No. 54/79
Map File M 37 - 20