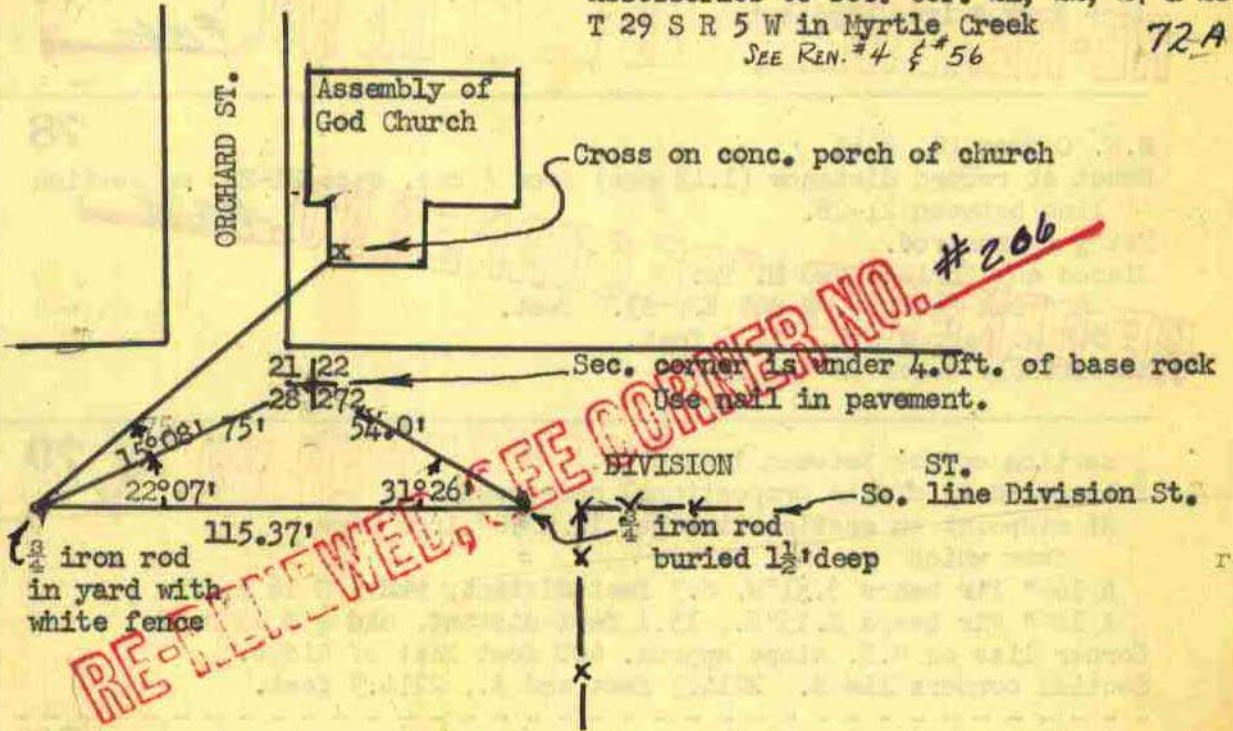


Douglas County Surveyor's Record of
Government Corners Renewed

29 T. S. 5 R. W. W. M.

KOPE-CHAPMAN CO., EUGENE, ORE. 97196

Assessories to sec. cor. 21, 22, 27 & 28
T 29 S R 5 W in Myrtle Creek
SEE REN. #4 § 56 72A



A. R. EVANS
NOV. 1952
Drawer 41
Envelope 81

Center 1/4 cor. Sec. 22

Set 1" L. B.

18" Laurel S 60° W, 41.3'

18" W. Oak, N 23° E, 91.1'

M'k'd. 1/4 S22 BT

DONALD R. MARTIN - SEE M 48-41

- 5/73 - SET 5/8 I.R. IN OLD FENCE CORNER

73

1/4 Cor. Secs. 21 & 22

Set By Prop. Meas.

" 5/8 I. R.

18" B. O. N 30° E, 11.9'

M'k'd. 1/4 S22 BT

14" Fir N 26 1/2° W, 19.1'

M'k'd. 1/4 S21 BT

1/4 Cor. 15 & 22

Set by prop. meas.

" 3/4" I. R.

16" Fir, N 32° E, 1.8'

M'k'd. 1/4 S15 BT

10" fir, S 58° W, 37.2'

M'k'd. 1/4 S22 BT

Both have copper tags m'k'd. R.E.2741 nailed on.

74

75

Section corner 4-5-8-9,

All 4 renewed bearing trees logged.

At corner point found wood post scribed and drove a 1" by 30" I.P. - Ren #21 from which

A La. 24" diam. bears west 60.0' dist. - this is an original

B. T. fd. scribe and remarked S8, B.T.

A La 24" diam. bears N35W, 107.0' dist. mkd. S5, B.T.

A fir 24" diam. bears N 81° E, 80.0' dist. mkd. S4, B. T.

A maple 10" diam. bears S 71° E, 113.0' dist. mkd. S9, B. T.

Corner lies on North slope 80.0' East of main side ridge.

The NW corner of Sec. 4 can be seen from here and bears N 7 1/2° W,

5514.0' dist. (Var. 20-00')

76

1/4 corner 4-5,

Set by proportional measurement.

At a point on section line between 4 & 5; 2782' south of the NW

cor. 4, and 2732' North of the SW cor. of sec. 4 I drove a

1"x30" I.P. for 1/4 cor. sec. 4&5 from which

A W. O. 30" diam. bears S70W, 45.0' dist. mkd. S5, B. T.

Creek bears west 80.0' dist.

An East-West fence runs 10' south of corner. Corner lies along

south edge of old road in opening.

RE-RENEWED, SEE CORNER NO. #138

1953

Feb.

A. R. Evans

Drawer 41

Env 135

John H. Markham Jr.

6-1-52

Filed in 41-53

work done for Stomar

Imbr. Co.