

Douglas County Surveyor's Record of
Government Corners Renewed

28

T. S.

7

R. W. W. M.

KOKE-CHAPMAN CO., EUGENE, ORE. 21881

West $\frac{1}{4}$ Corner Section 6.

Find. O.K. H. Stockhoff
M 87-69

165

Found - Brass Cap at Corner. Both BT's, now down. We open S.E. BT. & find good scribing.

New BT's: 20" R.Fir bears N.10°E. 34.4 ft. scribed $\frac{1}{4}$ S 6 CS BT.
12" R.Fir bears S.71°E. 28.7 ft. scribed $\frac{1}{4}$ S 6 CS BT.

$\frac{1}{4}$ Section Corner to Sections 7 and 8.

166

Found - Both BT's., 1924 survey and Orig., now 30" B.Oak, previously opened, shows good scribing "BT". Find bearing should be S.30°E., not S.50°E.

I^v I. P. at corner said by Monger to have been set by Boyer. Monger also states that he has known about this corner for 25 years and that he has never seen a brass cap here.

Set Brass Cap alongside I. Pipe Mkd: County Surveyor's Office, 1961
 $\frac{1}{4}$ S7/S8 T28S R7W.

Bearing Trees O. K.

West $\frac{1}{4}$ Corner Section 18.

167

Found - Brass Cap at Corner and N. E. BT., now down, shows scribe marks. S. E. BT. not found.

New BT's: 12" R.Fir bears N.46°E. 16.6 ft. scribed $\frac{1}{4}$ S18 CS BT.
10" Cedar bears S.67°E. 25.0 ft. scribed $\frac{1}{4}$ S18 CS BT.

$\frac{1}{4}$ Section Corner to Sections 7 and 18.

168

Found - Both BT's. as recorded by Boyer. N.W. BT. down. We do not find Iron Pipe at Corner. -REN.#64

Set - Brass Cap at Corner Mkd: County Surveyor's Office, 1961
 $\frac{1}{4}$ S 7 T28S
S18 R7S

New BT's: 12" Cedar bears N.59°E. 30.0 ft. scribed $\frac{1}{4}$ S 7 CS BT.
10" W.Fir bears S.51°W. 28.3 ft. scribed $\frac{1}{4}$ S18 CS BT.

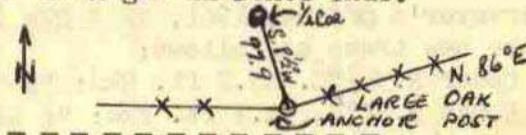
$\frac{1}{4}$ Corner to Sec. 36, T28-7W. & Sec. 1, T29-7W. SAME AS 181

169

Found - Both BT's., recorded by Eppstein. 18", now 20" Fir Stump, N. E. 31.0 ft., not N.16°E., shows good bark scribing, "BT".
16", now 18" Fir Stump S.47°W. 15.0 ft., shows old axe work, cut too low, no scribing found. See #68

Set - Brass Cap at Corner Mkd: County Surveyor's Office, 1961
 $\frac{1}{4}$ S36 T28S R7W
S 1 T29S

No trees near for BT's. To Angle in Fence Thus:



$\frac{1}{4}$ Section Corner to Sec. 36, T28-7W. & Sec. 31, T28-6W.

170

Found - $\frac{5}{8}$ " Bolt at Corner. 10", now 16" Fir Snag N.6 $\frac{1}{2}$ °E. 45.0 ft., We opened & find good scribing "S".

8", now 12", down Laurel S.71°W. 17.5 ft.

No Trace of Original BT's. found.

Set - Brass Cap at Corner and alongside $\frac{5}{8}$ " Bolt. & Marked County Surveyor's Office 1961

$\frac{1}{4}$ S36/S31 T28S
R7W R6W

New BT's: 9" W.Oak bears N.60°W. 12.4 ft. scribed $\frac{1}{4}$ S36 CS BT.

10" Laurel bears S.60°E. 29.8 ft. scribed $\frac{1}{4}$ S31 CS BT.

N. S. Fence is 32 ft. West of Corner.

James W. Byron, Deputy
Milo Godfrey
Clete Putnam
May 1961
C. S. File No. 49/50

See #197.28-6