

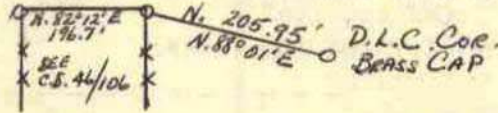
Douglas County Surveyor's Record of
Government Corners Renewed

T. 28 S. T. S. R. 6 W. R. W. W. M.

KORE-CHAPMAN CO., EUGENE, ORE. 97401

131

Interior L. Corner D.L. C. No. 52 and
S. E. Corner D. L. C. No. 49.
Found - Brass Cap at Corner, 2" under surface. *Ren. #61*
No trace of N.W. Bearing Tree found.
S. W. O.K. should be S.62°W. 300.6 ft., not S.42°W. 300.6'
New BT: 20" B.Oak bears N.19°E. 200.6 ft. scribed SE DLC 49 CS BT.



J. Byron &
Crew
Nov. 15, 1962
C.S. File
No. 49/139

132

Center $\frac{1}{4}$ Corner of Section 25.
Run S.0°04'W. from the $\frac{1}{4}$ cor. of Sections 24 and 25
40.11 chains and Set - 6" x 12" x 16" Stone Marked "X",
8" in the ground, from which:
A. W. Oak 24" marked C. S. bears S.80°W. 62 links.
A B. Oak 32" marked C. S. bears N.76°35'W. 120 links.

By. F.C.Frear
Feb. 24,
1921
Recorded in
Volume 2
Page 282

Center Corner of Section 25. - *SAME AS ABOVE*
Set a Stone 6" x 12" x 16" Marked X, 8" in ground, from which:
W. Oak 24" in diam. mkd. CS bears S.80°W. 62 links
B. Oak 32" in diam. mkd. CS bears N.76°35'W. 120 links.
Var. at this point, 21°25'E.

F. C. Frear, Co.Surv.
Recorded in
Vol. 2, Page
282
Feb. 1921

133

S. E. Corner Claim 42.
I ran the south line of the claim and found evidence of the SW
corner which was the badly decayed stumps of a double Laurel, also
a fir stake marked Cl 42 which Mr. C. E. Roberts stated he had
placed there from the same two stumps that I took as remains of the
bearing trees, Mr. Roberts had run the west boundary of the claim
and stated that the dist. & direction checked closely. I found
the S. boundary of the claim checked closely and established the
S. E. Corner by placing it N.89°52'E. 4004.7 ft. from the S.W.
corner and S.0°25'E. 1347.8 ft. from the corner on the Township
Line. The old witness tree then bore N.52°W. 97.5 ft. making
the scar nearly face the corner as located.
New Tree: Oak 10" in diam. N.7°50'W. 75.6 ft.
Cor. Mkd; with an I.Rod 1"x40". Also an Oak Post 4"x4"x40".

J. W. Cole, Deputy
For Round Prairie Ranch
December 1921
Volume 3, Page 83-84

134

S. W. Corner Claim 42.
Renewed by setting an Oak Post 4" x 4" x 40" from which:
36" Fir bears S.69°20'W. 39.8 ft.
36" Fir bears S.22°30'E. 31.2 ft.
See corner above for evidence found.

135

Northeast Corner of the Phipps D.L.C. No. 42.
in Sec. 34, T28S, R6W, W.M.
Found - $\frac{1}{2}$ " Iron Rod at fence corner, from which a:
36" White Oak, Orig. BT. with old scribes "C 4",
visible on the south side, and a very old face,
now mostly rotted out, on the north side, bears
S.12°E. 47.8 feet.
10" White Oak, I scribed "DLC 42 T28S R6W" bears
N. 2° E., 77.2 feet.

Bruce A.
Shaner
Feb. 1964
C. S.
File
No. 51/281

136

Sath $\frac{1}{4}$ Corner to Sec. 36 only, T27-6W.
(North Line T28-6W)
Found - 14" Bl. Oak N.11°W. 30.4 ft. Opened & fd. good rev. scrbing.
Did not find N. E. Tree.
Set - Brass Cap at Cor. Mkd: County Surveyor's Office, 1964
T27S R6W $\frac{1}{4}$ S36
New BT's: 13" Bl.Oak N.50°E. 34.9 ft. Mkd: $\frac{1}{4}$ S36 CS BT.
17" Bl.Oak N.77°E. 25.5 ft. Mkd: $\frac{1}{4}$ S36 CS BT.
Note - Cor. lies on very steep N.W. slope above S. Umpqua River.

Milo E. Godfrey
Wm. Stoffel-Stone-
M. Darby
May 18, 1964
C. S. File No. 49/79

This is D.L.C. 37 in T29S, R6W