

Douglas County Surveyor's Record of
Government Corners Renewed

28 T. S. 6 R. W. W. M.

KOKE-CHAPMAN CO., EUGENE, ORE. 21881

James W. Byron, Deputy County Surveyor
Milo Godfrey
S. A. Bilow
November & December, 1958
C. S. File No. 49/50

Section Corner to Sections 29, 30, 31, & 32.

Found - Orig. 26", now 38" W. Oak S.60 $\frac{1}{2}$ °W. 159.7 ft., I open & find good scribing "31".

Orig. 20", now 40" W. Oak N.48°W. 291.7 ft., shows good scar. I do not open.

I do not look for Orig. N.E. BT.

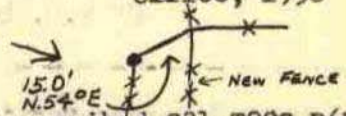
Orig. S. E. BT. gone.

Set Brass Cap at Corner Mkd:

S30	S29
S31	S32

 T28S R6W County Surveyor's Office, 1958

Note : Corner in old Rail Fence Line thus:



New BT's: 7" DbL. W.Oak bears S 1°W. 20.2 ft. scribed S31 T28S R6W CS BT.
9" Black Oak bears S.10 $\frac{1}{2}$ °E. 51.2 ft. scribed S32 T28S R6W CS BT.
15" Black Oak bears N.86°E. 156.0 ft. scribed S29 T28S R6W CS BT.

79

Section Corner to Secs. 31 & 32, T28S R6W, & Secs. 5 & 6, T29S R6W.

Found - 1 $\frac{1}{2}$ " Iron Pipe at Corner.

10", now 24" R. Fir S.69 $\frac{1}{2}$ °E. 24.0 ft., shows good scribing, on open face.

24", now 36" Fir Stump N.47°E. 34.3 ft., shows good scar. I do not open.

6", now 16" Fir, record N.22°E. 11.5 ft. I find should be N.86°W. 11.0 ft., shows good scar. I do not open.

No trace of Springer's S. W. BT.

I do not set Brass Cap at Corner.

New BT's:

16" R. Fir N.86°W. 11.0 ft. scribed S31 T28S R6W CS BT.

6" R. Fir S42°W. 44.4 ft. scribed S 6 CS BT.

25" R. Fir N.1 $\frac{1}{2}$ °E. 29.1 ft. scribed S32 T28S R6W CS BT.

80

Section Corner to Secs. 6 & 7, T28S R6W, & Secs. 1 & 12, T28S R7W.

Found - All BT's. as recorded by Frear, 1917.

36" W. Oak N. 3 $\frac{1}{2}$ °W. 117.5 ft., now down & partly rotted. I find good scribing "BT".

30" B. O. S.17 $\frac{1}{4}$ °E. 108.9 ft., now down.

24" B. O. S.22°W. 79.9 ft., shows scar, I do not open.

36" W. O. N.20 $\frac{1}{2}$ °E. 150.5 ft., shows scar, I do not open.

Find Corner Stone with + on top.

Set Brass Cap alongside Corner Stone & Mk.

S1	S 6
R7W	S12 S 7

 T28S County Surveyor's Office, 1958 R6W

New BT's:

12" W. O. bears N.56°W. 23.2 ft. scribed S 1 T28S R7W CS BT.

28" W. O. bears N.25°E. 52.0 ft. scribed S 6 T28S R6W CS BT.

10" W. O. bears S.62°E. 35.9 ft. scribed S 7 T28S R6W CS BT.

10" Laurel " S.32 $\frac{1}{2}$ °W.50.5 ft. scribed S12 T28S R6W CS BT.

81

North $\frac{1}{4}$ Corner to Section 6.

Found - Orig. 12", now 26" W.Oak S.77°E. 156.4 ft. We opened & found good scribing "S".

Orig. 24", now 48" B.Oak Snag S.8 $\frac{3}{4}$ °W. 209.9 ft., shows scar.

Note - Corner under E. W. Fence.

Set Brass Cap at Corner Mkd: County Surveyor's Office, 1961 North $\frac{1}{4}$ S 6 T28S R6W.

New BT's: 15" W.Oak bears S.73 $\frac{1}{2}$ °E. 42.5 ft. scribed $\frac{1}{4}$ S 6 CS BT.

14" W.Oak bears S.55°W. 35.8 ft. scribed $\frac{1}{4}$ S 6 CS BT.

*Fd 8/90
M112-12*

82

Section Corner to Sections 6 and 5 only.

Found - Orig. 12", now 24" W.Oak S.61°W. 679.8 ft. We open & find good scribing "S8".

Set Brass Cap at Corner Mkd: County Surveyor's Office 1961 T28S R6W S 6/S 5

New BT: 24" B.Oak bears S.88°W. 497.0 ft. scribed S6 T28S R6W CS BT. 149

No Tree near to S. E.

S. E. Corner of Stock Barn bears N.60°W. 121.5 feet.

James W. Byron
Milo Godfrey
Clete Putnam
January 23, 1961
C.S. File No. 49/50

83