

Douglas County Surveyor's Record of
Government Corners Renewed

28 T. S. 6 R. W. W. M.

ROSE-CHAPMAN CO., EUGENE, ORE. 97198

70

Section Corner to Sec. 30, T28/R6; Sec. 31, T28/6 & Secs. 25 & 36, T28S. R7W.
& S. E. Corner to D.L.C. #58.

Found - Orig. 40", now 42" Oak Snag S.80°W. 73.9 ft., center rotted,
no scribing found.

Orig. 28", now 36" Oak, down S.71½°E. 223.1 ft., center &
most of tree rotted, no scribing found.

No trace of other BT's. found.

Set Brass Cap at Corner Mkd: County Surveyor's Office, 1958

S.E. Corner. DLC 58 S25|S30 T28S
R7W S36|S31 R6W

Note: Fence Corner 3.0 ft. West.

New BT's: 38" B. Oak bears N.44½°E. 206.6 ft. scribed S30 T28S R6W CS BT.

12" Laurel bears West 47.5 ft. scribed S25 T28S R7W CS BT.

12" W. Oak bears S.61½°E. 12.2 ft. scribed S31 T28S R6W CS BT.

12" Laurel bears South 9.0 ft. scribed S36 T28S R7W CS BT.

Statement by J. Harold Nichols: "I have known the 42" Oak Snag used on
this date to determine the position of the Section Corner, to be a
a bearing tree, and that I saw scribing on this BT. years ago.

71

Section Corner to Sec. 31, T28/R6; Sec. 6, T29/R6; Sec. 36, T28/R7; Sec. 1, T29/R7.

Found - Orig. N.W. BT. I find 24" Oak Snag, I open & find good scribing,
"S36 BT".

I do not find other Orig. BT's. I do find partly rotted Laurel
Stump that was opened years ago, no scribing found today,
record S22°E. 54.2 ft., I find to be S26°E. 51.0 ft. I believe
these are the BT's. found by Eppstein, 1928. All of Eppstein's
BT's have been cut & no scribing can be found on any stump, except I do find good scribing on S.W. BT. which is in slide
area & far out of position. I find 18" Cut Fir in slide area
scribed for S.E. BT. The evidence I find of Eppstein's BT's
do not agree with Orig. nor do they come to a sommon corner.
Therefore, I use the Orig. record bearing & distance from
N.W. BT. to Set Corner, N.71½°W. 39.6 ft.

Set Brass Cap at Corner Mkd: County Surveyor's Office, 1958

S36|S31 T28S
S18|S8 T29S
R7W R6W

New BT's: 15" R. Fir bears N.27°E. 55.6 ft. scribed T28S R6W S31 CS BT.

15" R. Fir bears N.28°W. 47.9 ft. scribed T28S R7W S36 CS BT.

13" R. Fir bears S.54°W. 124.6 ft. scribed T29S R7W S1 CS BT.

No trees near to S.E.

RE-RENEWED CORNER NO. #185

James W. Byron, deputy County Surveyor
Milo Godfrey
S. A. Billow
Nov. 17, 1958
C. S. File No. 49/50

72

¼ Section Corner to Sec. 30, T28S R6W, & Sec. 25, T28S R7W.

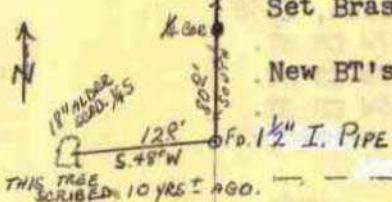
Found - Orig. 24", nlw 36" W. Oak S.17½°W. 248.8 ft. I open & find
good scribing "BT".

No trace of Orig. S. E. BT. found.

Set Brass Cap at Corner Mkd: County Surveyor's Office, 1958 ¼ S25/S30
R7W R6W.

New BT's: 8" B. Oak bears N.25°E. 96.7 ft. scribed ¼ S30 CS BT.

6" Pine bears S.22½°W. 173.3 ft. scribed ¼ S25 CS BT.



SKETCH IN FILE

73

¼ Section Corner to Sections 18 & 19.

Found - Orig. 16", now rotted Oak Stump N.75°W. 12.5 ft., no scribing
found.

Orig. 15", now 30" B. Oak, I open & find good scribing "¼S"
record S52°W. 26.4 ft, should be S.32°W. 26.4 ft.

Find 24" x 6" x 6" Stone at Corner.

Set Brass Cap alongside corner Stone Mkd: ¼ S18 T28S R6W County Surveyor's
S19 Office, 1958.

New BT's: 36" Madrone S.48°E. 36.6 ft. scribed ¼ S19 CS BT.

7" Madrone N.60°W. 12.5 ft. scribed ¼ S18 CS BT.

Statement by Buxton: I, Chas. Buxton, state that the Corner Stone
was in place in 1920. Also, the rotted stump used on
this date as the Original N.W. BT. is the old original BT.

Signed, Charles Buxton

Dec. 2, 1958

C. S. File No. 49/50

FNO: 4/19/1991-036