

Douglas County Surveyor's Record of
Government Corners Renewed

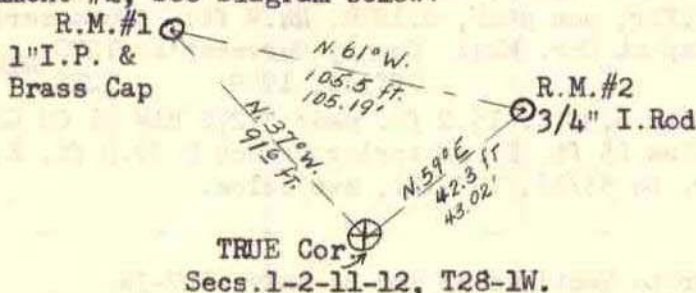
T. 28 S. T. S. R. 1 W. R. W. W. M.

ROKE-CHAPMAN CO., EUGENE, ORE. 21881

21

Reference Section Corner to Sections 1 - 2 - 11 - 12.
Found - Corner Stone with 1 notch on E. & 5 notches on S.
Orig. 16", now 20" Fir, alive, N. 55° E. 27.1 ft., shows good scar.
Orig. 16", now 20" Fir, Snag, S. 20° E. 36.3 ft., shows good scar.
Orig. 16", now 20" Fir, dying, N. 15° W. 27.1 ft., shows good scar.
Corner Point & Orig. BT's. will be destroyed by new road to be built.
From True Corner, we go N. 37° W. 91.6 ft. & Set:
Set - Brass Cap for Ref. Monument # 1 mkd: County Surveyor's T28S R1W
Office RM S 2 | S 1
1970 #1 S 11 | S 12

New BT's: 9" D. Fir N. 38° E. 13.4 ft. mkd: "RM 1 CS BT".
14" D. Fir N. 37° W. 20.3 ft. mkd: "RM 1 CS BT".
From True Corner Point we go N. 59° E. 42.3 ft. & Set 3/4" I. Rod for
Reference Monument #2, See Diagram below:



TRUE Cor
Secs. 1-2-11-12, T28-1W.

7/21/70

22

Section Corner to Sections 9 - 10 - 15 - 16.
Found - 15 x 10 x 6 Stone, 4 notches South, 3 notches East, firmly
set in ground.
14", now 28" Fir, N. 59° E. (Rec. N57E) 68.0 ft.
12" Fir, now down, S. 24° E. 35.0 ft., found face, no scribing.
40", now 48" Fir, S. 34° W. 62.4 ft. (Rec. 55.4) opened earlier
for scribe "8S".

No trace of N. W. BT.
Set - Brass Cap alongside N. Side of Stone Mkd: County Surveyor's Office
T 28 S R 1 W
S 9 | S 10
S 16 | S 15
1971

New BT's: 7" D. Fir N. 86° W. 10.7 ft. scribed "T28S R1W S9 CS BT".
13" D. Fir S. 58° E. 19.4 ft. scribed "T28S R1W S15 CS BT".

9/3/71

23

CC corner for Sections 3 and 4 only.
Found - Orig. 12" now 17" Red cedar with scribing visible on opened face.
Orig. SW bearing tree, a Fir, is now gone.
The brass cap set in 1969 by the Co. Surveyors Office has been
destroyed in logging operations. Ren. #11
Set - Brass cap mkd:

COUNTY SURVEYORS	T 27 S
OFFICE	S 34 R
1974	S 4 S 3 1
	CC W
	T 28 S

At record measurements from the only remaining bearing tree, a 12" now 17"
Red cedar bearing S. 12 W., 21.1 ft. we mark the following BT:
a 17" Hemlock bears S. 77 E., 194.6 ft. scribed "CC T28S R1W
S3 CS BT".

6/24/74

24

Section Corner for Secs. 33 and 34 only, T27-1.
Found - Brass cap mkd. as described in Ren. #12 by Co. Surveyors in 1969
From which - An approx. 40" Pine stob bears N. 40 E., 7.3 ft. No marks
visible, area has been disturbed by logging.
A 15" D. Fir, bears N. 14 1/2 W., 38.3 ft. shows good scar.
No trace of NE BT, a Hemlock marked in 1969.
New BT - A 24" D. Fir bears N. 52 E., 61.2 ft. scribed "T27S R1W S34 CS BT"

6/24/74

Vernon "Ray" Tracy
Vincent Perron
C. S. File 54/94

John M. Powell
W. Penley & J. Heritage
C.S. File No. 54/94

JAN 1972

Gary L. Langlitz, County Surveyors Office
Peter Earle
C/S. 56/51
June 24, 1974

JAN 74