

Douglas County Surveyor's Record of
Government Corners Renewed

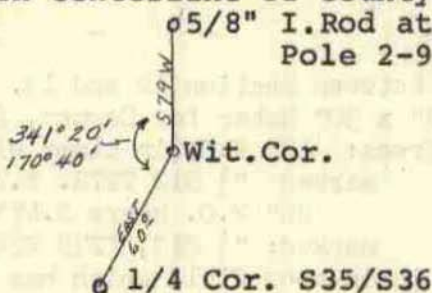
T. 27 S. T.S. R. 7 W. R.W.W.M.

KOKE-CHAPMAN CO., EUGENE, ORE. 97401

175

1/4 Corner Secs. 35 & 36, (continued)
I leave Witness Corner set for Bearing Object.
Set - Brass Cap at Cor. Mkd: County Surveyor's T27S R7W
Office, 1971 1/4 S 35 | S 36

Bearing Objects for 1/4 Corner:
5/8" I.Rod N. 24° W. 60.3 ft.
3 1/2" Iron Pipe N.31 1/2° E. 59.2 ft.
1 1/4" Iron Bar S.79° E. 30.7 ft., See Ren. #41.
This corner lies under 26" Manhole cover which lies in front
of Lookingglass Store in centerline of County Road.
5/8" I.Rod at base of Tele.
Pole 2-94B S.79°W. 133.1'



10/12/71

JAN. 1974

John M. Powell
J. Heritage & W. Penley
C.S. File No. 54/23

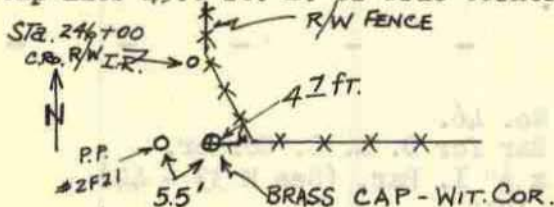
176

Wit. Corner to Sec. Cor. T26S R7W S 35 | S 36
T27S S 2 | S 1

Found - 1966 Doug. Co. Brass Cap, in place, as recorded in Ren. #174
Both Iron Pipes & Cedar BT's., now gone.
Ties to corners of house fit O.K.

We tie Witness Corner to Co. Rd. R/W Pins, as follows:
5/8" Iron Rod at Sta. 246+00 bears N.33°W. 25.0 ft.
5/8" Iron Rod at Sta. 246+75 bears S.14°W. 55.8 ft.

Note: Brass Cap lies 45.0 ft. E. of True Corner, see diagram:



7/11/71

FD OK
SEE M 109-57488
2/90 HEILBUER
Vernon "Ray" Tracy
Jack Heritage
S. File No. 56/34

{ SEE M 52-12
1977 SURVEY
FOR SPIKE SET PER
CHANGER }

Sec. Cor. Sec. 6 and Sec. 31, T26-7; Sec. 36, T26-8; Sec. 1, T27-8

Found - 40" D. Fir stump, orig. BT, face badly burned, scribes
"BT" vis., bears S.32°W., 54.8 ft.

36" D. Fir stump, prob. orig. BT, badly burned and
and rotted, bears N.35°W., 59.0 ft. (rec. N.40°W.,
61.4 ft.)

36" Cedar stump, prop. orig. BT. I re-scribed T26S
R7W S31 BT", bears N.20°E., 78.0 ft. (rec. 67.3 ft.)

Set - Brass cp mkd. T26S, R8W, S36; T26S, R7W S31: T27S, R8W
S1; T27S, R7W, S6.

New BT's - 6" D. Fir, scribed "T26S, R8W, S36 BT", bears N.64°E.,
55.4 ft.

8" hemlock, scribed "T27S, R7W S6 BT" bears S.62°E.,
24.7 ft.

8" D. Fir, scribed "T27S, R8W, S1 BT" bears S.34°W.,
114.4 ft.

Shaner Engineer
for Hub Lumber &
Weyerhaeuser Co.
Dec. 21, 1973
M 49 - 49

178

West Northwest Cor. Cl. No. 40

Found - Rock Ren. No. 50E

Set - 5/8" x 30" Iron Rod.

FD OK
5/88
R. Gummy
M106-16

Herbert Northcraft
for Tom Albertson

179

Northeast Corner Cl. No. 40 Ren. No. 50F

Set - 5/8" x 30" Iron Rod.

M 52 - 26
Dec. 1973

180

Northwest Corner Cl. No. 43.

Found - 3/4" Iron Pipe
12" W. Oak, N.63 1/2°E., 63 ft. scribed.