

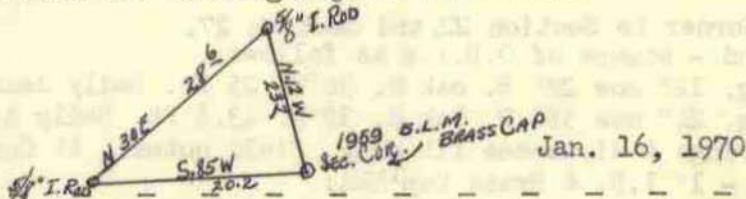
Douglas County Surveyor's Record of  
Government Corners Renewed

T 27 S. T. S. R. 7 W. R.W.W.M.

HOKE-CHAPMAN CO., EUGENE, ORE. 21981

163

Section cor. secs. 5 and 4, T27-7W, and secs. 32 and 33,  
T26-7W. REN.#39  
Found - Orig. 36" Douglas Fir, now snag, N.75 3/4°E. 11.9 ft.  
Shows scar.(burnt)  
Orig. 24" Douglas Fir, now snag, N.64°W. 29.7 ft.  
Shows scar.(burnt)  
28" Douglas Fir, now snag, S.68 1/2°W 44.2 ft. Shows scar.  
36" Douglas Fir, now stump, E. 51.5 ft.  
1959 B.L.M. brass cap, set flush with ground, properly mkd.  
Set - 5/8" Iron rods for bearing objects as follows:



John M. Powell  
Frank Jones & W. Penley  
C. S. File No. 54/23

164

Section Corner to Sections 4 - 5 - 8 - 9.  
Found - 30" Cedar Snag S.55°W. 9.2 ft., face burnt.  
6" Laurel, now 11", N.86°W. 37.6 ft., scribe marks visible.  
16"x8"x16" Corner Stone in 4-Way Fence Corner. See Ren.#105.  
Set - Brass Cap at Cor. Mkd: County Surveyor's T 27 S R 7 W  
(Set alongside Stone) Office S 5 S 4  
1970 S 8 S 9

New BT's: 6" Laurel N.83°E. 8.6 ft. mkd: T27S R7W S 4 CSBT.  
6" Laurel S.34°W. 9.8 ft. mkd: T27S R7W S8 CS BT.  
1/21/70

165

1/4 Corner to Sections 5 and 4.  
Prorated corner from survey. REN #50  
Set - Brass Cap at Cor. Mkd: County Surveyor's T 27 S R 7 W  
Office S 5 S 4  
1970 S 8 S 9  
New BT's: 6" D. Fir S.1°W. 99.6 ft. scribe marks visible.  
Bearing Objects: 4" x 4" large 8.0 ft. high rock near top, south 179.1 ft.  
1/2" 5/8" Iron Rod N.50 1/2°E. 35.1 ft.  
Fd. - 5/8" I.Rod 27.35 E. of line, set by D. Garrett, See. (C.S. 55/138) 70

Center of Section 4.  
This corner set from survey at prorated distance.  
Set - Brass Cap at Cor. Mkd: County Surveyor's T 27 S R 7 W  
Office C 1/4  
1970 S 4

New BT's: 6" D. Fir S.74°E. 29.9 ft. scribed C 1/4 S 4 CS BT.  
6" D. Fir N.69 1/2°W. 54.7 ft. scribed C 1/4 S 4 CS BT.  
1/21/70

167

Section Corner to Sections 25 & 36, T27-7W, and  
Sections 30 & 31, T27-6W.  
Set - 1 1/4" Iron Rod - Set by proportionate measurement.

Note - Wit. Corners Set North of This Iron Rod.

1/4 Corner to Sec. 25, T27-7W. & Sec. 30, T27-6W. **168**  
Set - 1 1/4" Iron Rod.  
P. Pole N.74° 58'W. 198.0 ft.  
12" Fir S. 87° 40' E. 169.3 ft.

Center of Section 25. **169**  
Set - 3/4" Iron Rod  
Bearing Trees: 8" W.Oak S. 71° W. 27.1 ft.  
12" W.Oak S. 82°50' E. 17.2 ft.

James W. Byron, Co. Surv.  
John M. Powell & Crew  
C. S. File No. 54/99 M 39 - 16

Roger H. Gee  
For E.G. Ziegler  
October, 1967  
Map File M 33 - 48

Fd. I.P. 8/90  
M 110-59

**RE-RENEWED, SEE CORNER NO. #206**