

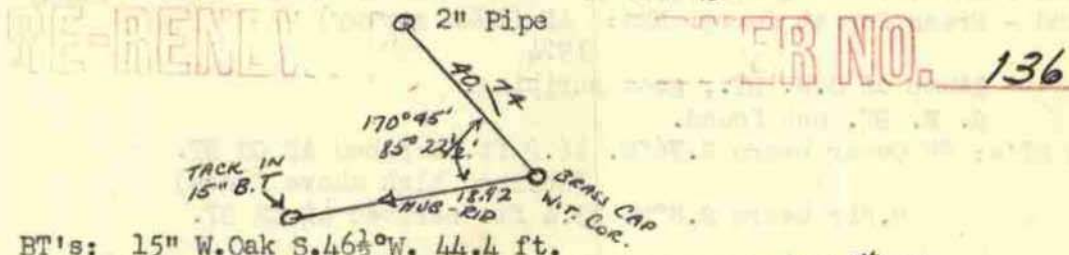
Douglas County Surveyor's Record of
Government Corners Renewed

27 T. S. 7 R. W. W. M.

KOKE-CHAPMAN CO., EUGENE, ORE. 21881

116

Witness Corner to N. E. Corner D.L.C. No. 43.



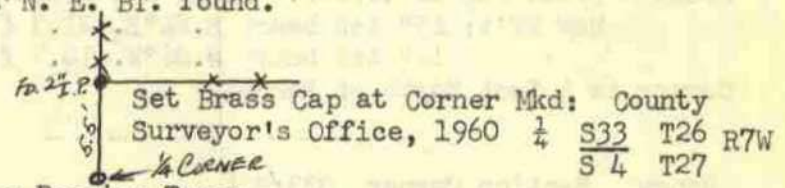
BT's: 15" W.Oak S. $46\frac{1}{2}^{\circ}$ W. 44.4 ft.
20" W.Oak S. 66° W. 48.9 ft.
Set Brass Cap Witness Corner. 15 feet South

REN.# 51

116A

$\frac{1}{4}$ Sec. Cor. Sec. 4, T27-7W & Sec. 33, T26-7W.
Found - Orig. 20", now 34" Laurel Snag S. 87° W. 44.9 ft. We open & find good scribing "T".
No trace of Orig. N. E. BT. found.

Corner Thus:



No trees near Suitable for Bearing Trees.

117

$\frac{1}{4}$ Section Corner to Sections 17 and 16.
Found - Orig. 12", now 20" W.Oak Snag. We open & find good scribing, reverse scribng "B".
Shell of large Oak bears S. 32° E. 17.4 ft. (record S. 58° E. 44.9 ft.)
N. W. portion of Oak gone. This shell checks record dist. & bearing from 3" x 12" x 18" Stone with + on top which has been used for $\frac{1}{4}$ corner for 50 year +, states Paul Dimmer.
The W. Oak faces to our corner and I believe the record distance & bearing to S. E. (Oak Shell) is in error.
Set Brass Cap at Corner Mkd: County Surveyor's Office, 1961 $\frac{1}{4}$ S17/S16 T27S R7W

Note - Stone with Cross bears N. 72° W. 28.8 ft. from B. C. ap.
New BT's: 11" W. Oak bears N. 7° W. 11.3 ft. scribed $\frac{1}{4}$ S17 CS BT.
8" W. Oak bears S. 74° E. 16.8 ft. scribed $\frac{1}{4}$ S16 CS BT.

118

$\frac{1}{4}$ Section Corner to Sec. 5, T27-7W. & Sec. 32, T26-7W.
Found - Orig. 30", now 36" R.Fir Stump S. 58° E. 8.6 ft. We open & find good scribing "BT".
No trace of N. W. BT. found.

Set Brass Cap at Corner Mkd: County Surveyor's Office, 1961 $\frac{1}{4}$ S32 T26S S 5 T27S R7W
New BT.: 12" R.Fir bears N. 66° W. 134.0 ft. scribed $\frac{1}{4}$ S32 CS BT.
No trees near to South.

119

Section Corner to Secs. 31 & 32, ~~T27-7W.~~ & Secs. 5 & 6, ~~T26-7W.~~
Found - Orig. 18", now 42" Fir Stump S. 75° W. 42.9 ft., shows good scribing "BT".

Orig. 24", now 48" Fir Stump, checks bear. & dist. for N.W. BT.
Orig. S.E. BT. would be in existing Roadway.
Orig. 10", now 28" Fir, checks bearing & distance for NE BT.

Set - Brass Cap at Corner Mkd: County Surveyor's Office, 1961 $\frac{1}{4}$ S31 S32 T26S S 6 S 5 T27S R7W

Note - $\frac{3}{4}$ " Pipe bears S. 43° W. 2.5 ft.
New BT's: 21" Fir bears N. $43\frac{1}{2}^{\circ}$ E. 41.5 ft. scribed S32 T26S R7W CS BT.
24" R.Fir " S. 9° E. 65.3 ft. scribed S 5 T27S R7W CS BT.
No trees near West of Corner.

120

$\frac{1}{4}$ Section Corner to Sections 28 and 33.
Found - Gov't Brass Cap at Corner. Also 24" B.Oak N. 31° E. 180 lks. (Good scribing visible in open scar. Tree nearly dead).
10" W.Oak S. 17° E. 9.2 ft., scar open, face nearly rotted away.
New BT's: 15" Pine S. 79° W. 5.3 ft. Mkd: $\frac{1}{4}$ S33 CS BT".
10" D.Fir N. 13° E. 89.6 ft. Mkd: $\frac{1}{4}$ S28 CS BT.
New Fence Line E. & W. through corner.

James W. Byron, Deputy County Surveyor
Milo Godfrey
Clete Pitnam
January 1961
C. S. File No. 4979

February 1961