

Douglas County Surveyor's Record of  
Government Corners Renewed

27 T. S. 6 R. W. W. M.

KOKE-CHAPMAN CO., EUGENE, ORE. 21881

64

James W. Byron  
Milo Godfrey  
Clete Putnam  
April 14, 1960  
C.S. File No. 49/55

Interior L Corner D.L.C. No. 50.  
Found - 6" x 12" x 12" Stone Set by B.B.I., 1939. REN #46  
24" Oak Stump shows good scar S.67°55'E. 105.2 ft.  
Set Brass Cap 1" under Road surface and alongside Corner Stone Mkd:  
County Surveyor's Office, 1960  
Int. L. Cor. DLC 50 T27S R6W.  
New BT: 20" Walnut bears N.26°E. 53.0 ft. scribed CS BT near base.  
3/4" Rod bears N.51°E. 51.4 feet.

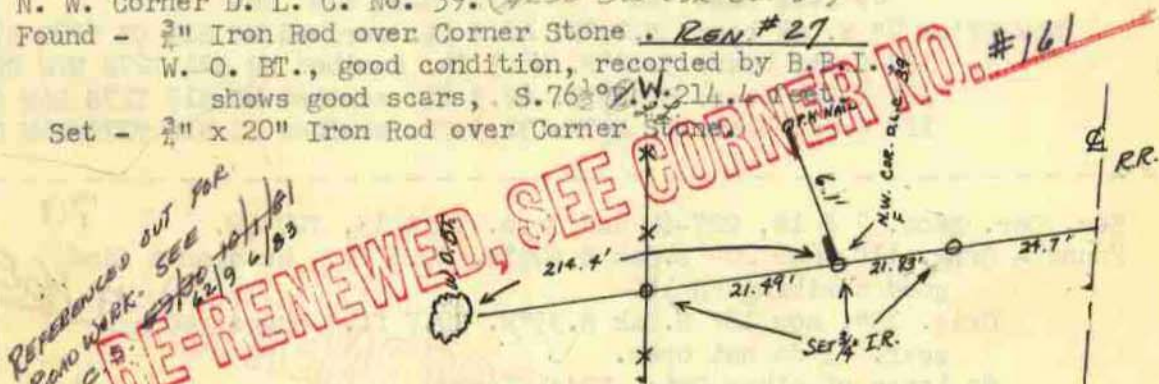
FO. OK 3/75 M53-18; RA-D GARRETT

65

James W. Byron  
Milo Godfrey  
Clete Putnam  
For Mrs. M.M. Jordan  
May 2, 1960  
C.S. File No. 38/73  
M 18 - 40

N. W. Corner D. L. C. No. 39. (also see cor. #12)  
Found - 3/4" Iron Rod over Corner Stone. REN #27  
W. O. BT., good condition, recorded by B.B.I.  
shows good scars, S.76°W. 214.1 ft.  
Set - 3/4" x 20" Iron Rod over Corner Stone

REFERENCES OUT FOR  
ROAD WORK - SEE  
C-5  
2/19 4/83



66

James W. Byron  
Milo Godfrey  
Clete Putnam  
May 10, 1960  
C.S. 49/55

N. W. Corner D. L. C. No. 55.  
Found - Mound of Stone and 4" x 4" sq. Stake at Corner. REN #30  
Also both BT's. as recorded by Eppstein except I find  
the dist. to the N.94°E. B.T. should be 231.7 ft.,  
recorded 237.2 ft.  
Set Brass Cap alongside Corner Post & scribed NW DLC 55 T27S  
R6W County Surveyor's Office, 1960  
New BT: 6" W.Oak bears N.20 1/2°W. 87.5 ft. scribed NW DLC 55 CS BT.

67

James W. Byron, Deputy  
Milo Godfrey  
Clete Putnam  
Aug. 16, 1960

Section Corner to Sections 17, 18, 19 and 20.  
Found - All of Crocker's BT's.: 16", now 24" Fir Stump S.51°E.  
12.9 ft., I open & find good scribing. REN #23  
12", now 16" Laurel S.61 1/2°W. 44.9 ft., shows scribe marks.  
10", now 14" B.Oak N.32 3/4°E. 41.3 ft., face rotted.  
14", now 24" B.Oak N.86°W. 43.8 ft., shows good scar,  
I do not open.

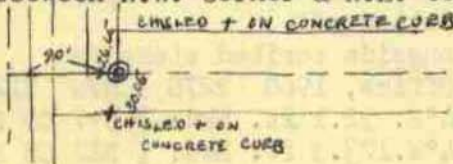
Fence Thus - - - N.60°E. 17.0 ft.  
Sec. Cor.

Set Brass Cap at Corner Mkd: County Surveyor's Office, 1960  
S18 | S17  
S19 | S20 T27S R6W  
New BT's: 6" R.Fir bears N.13°E. 13.5 ft. scribed S17 T27S R6W CS BT.  
10" R.Fir bears S.58 1/2°E. 41.7 ft. scribed S20 T27S R6W CS BT.

68

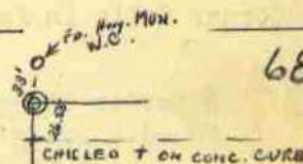
James W. Byron, Deputy  
For TIDEWATER OIL CO.  
M. Godfrey & C. Putnam  
Sept. 17, 1959  
C.S. File No. 49/184  
M 11-36

S. W. Corner D. L. C. 63.  
Set P K Nail for S. W. Corner D.L.C. 63 per tie to centerline  
RR and on line between N.W. Corner & N.E. corner D.L.C. 56.



N. W. Corner D. L. C. No. 56.  
Set PK Nail for Corner  
Found Highway Monument Witness Corner  
Chisled + in concrete curb.

SEE ALSO: #11; 43; 173



68-A