

Douglas County Surveyor's Record of
Government Corners Renewed

27 T. S. 5 R. W. W. M.

KOKE-CHAPMAN CO., EUGENE, ORE. 97301

84

N. W. Township Corner to T. 28 S., R. 5 W.
Found - Both Orig. B. T.'s. as follows:
14" W.Oak, now 18", nearly dead, S. 52° E. 414.5 ft.
Had been previously opened, scribe marks (BT) plainly visible.
12" G.Oak, 21" B.Oak Snag, 275.9 ft. Previously opened & face rotted, opened tree above old chopping, fd. fragmentary but unmistakable reverse scribing.

Set Iron Pipe with Brass Cap Mkd: County Surveyor's Office, 1961 R6W S 1/S 6 R5W
T27S
T28S

New BT's: 18" W.Oak S. 58° E. 209.8 ft. mkd: T28S R5W S 6 CS BT.
Crocker's S.W. BT., actually N.W. of Crocker's Cor., bears S. 87 1/2° W. 151.8 ft., shows good scars. Did not rescribe.

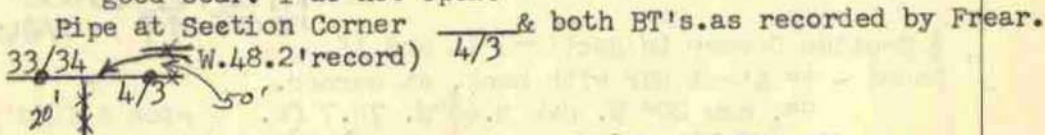
NOTE - Crocker's Iron Bolt bears S. 67 1/2° E. 76 ft. from true corner. SEE REN # 24

James W. Byron, Deputy
Milo Godfrey
Clete Putnam
Jan. 24, 1961
C.S. File No. 49/64

RE-RENEWED, SEE CORNER NO. #172

85

Corner to Sections 33 and 34 only.
Found - Orig. 10", now 30" B.Oak N. 51° E. 42.2 ft., shows good scar. I do not open.



Set Brass Cap Mkd: County Surveyor's Office, 1961 S33/S34 T27S R5W
T28S

New BT: 16" R.Fir bears N. 39° W. 8.0 ft. scribed S33 T27S R5W CS BT.
November 3, 1961

James W. Byron Crew
November 1961
C.S. File No. 49/64

86

South 1/4 Corner to Section 31.
Found - 3/4" Iron Bolt at corner. N.W. BT. shows good scars. I do not open. N.E. BT., now dead, 18" Fir. We open & find good scribing.

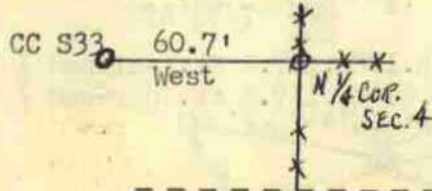
New BT: 8" W.Oak bears N. 38° E. 16.2 ft. scribed S 1/4 S31 CS BT.

Fr. O.K. by:
H. PIESKE
June 1962
see M 90-22
Fd 8/10 M112-17

87

South 1/4 Corner to Section 33.
Found - Orig. 10", now 12" B.O. N. 37° W. 133.3 ft., not 130.3 ft. shows good scribing on old face, "S".
Orig. 16", now 36" B.O. N. 15 1/4° E. 180.8 ft., shows old scar. I do not open.

Set - Brass Cap at Cor. Mkd: County Surveyor's Office, 1961
C. C. 1/4 S33 T27S R5W
New BT's: Rescribe Orig., now 36" B.O. N. 15 1/4° E. 180.8 ft Mkd:
S 1/4 S33 CS BT.



North 1/4 Corner Section 4, T28S R5W.
Found - Orig. 30", now 36" Pine Snag S. 34 1/4° W. 288.4 ft., shows good scribing "1/4".

Set - Brass Cap at Cor. Mkd: County Surveyor's Office, 1961
North 1/4 S4 T28S R5W.
New BT's: 26" Cedar bears S. 60° W. 85.5 ft. scribed N 1/4 S4 CS BT
44" Cedar bears N. 24° E. 57.0 ft. scribed N 1/4 S CS BT.

Fd. 5/21/84
R. Thompson
M 96-52

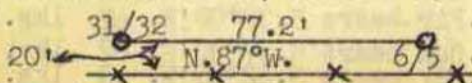
December 1961

88

Section Corner to Sections 6 and 5. T28-5 (see Ren #12, T28-5) 89

Found - Iron Bolt & Both BT's. which show good scars.
Set - Brass Cap alongside I. Bolt Mkd: County Surveyor's Off. 1961 S6/S5 T28S R5W

Sec. Corner to Sections 31 and 32 only, T27S R5W. North Edry T28S R5W.
Found - I. Bolt & now 28" R.Fir N. 9° W., not N. 9° E. 11.4 ft., Orig. N.W. BT. down.
New BT: 21" R.Fir bears West 5.5 ft., scribed S31 T27S R5W CS BT.



C.S. 49/64

SEE REN # 27

Fd 8/10 M112-12

89-A