

Douglas County Surveyor's Record of  
Government Corners Renewed

T. 26 S. T. S. R. 3 W. R.W.W.M.

KOKE-CHAPMAN CO., EUGENE, ORE. 21881

B.B. Irving  
1934 - 1935  
C.S. File  
No. 37/155

184

Center  $\frac{1}{4}$  Corner to Section 11. SEE ALSO REN. #202  
Set - 4" x 4" x 30" Fir Post mkd: "C $\frac{1}{4}$  S11 CS. #209  
New BT's: 20" Fir East 18.5 feet mkd: "C $\frac{1}{4}$  S11 CS BT".  
24" Fir N.30°W. 21.5 ft. mkd: "C $\frac{1}{4}$  S11 CS BT".

185

**RE-RENEWED CORNER NO. #239**  
 $\frac{1}{4}$  Corner to Sections 29 and 32.  
Corner set by proportionate measurement.  
Set - Brass Cap and Established Bearing Trees:  
5" Ash, in Ash Clump, N. 7° W. 7.0 ft. scribed " $\frac{1}{4}$  S29 BT".  
12" White Oak S.70°E. 178.9 ft. scribed " $\frac{1}{4}$  S32 BT".

186

West  $\frac{1}{16}$ th Corner Secs. 29 & 32.  
Set - 5/8" Iron Rod & established bearing trees:  
18" Blk. Oak bears S.38  $\frac{3}{4}$ °E. 29.5 ft. scribed "W 1/16 S32 BT!"  
10" White Oak bears N.27 $\frac{1}{2}$ °W. 29.8 ft. scribed " W 1/16 S29 BT".

187

Special Meander Corner Sec. 9  
This Meander Corner is on the N.-S. center line of Sec. 9, approx.  
190 ft. south of the S  $\frac{1}{16}$  cor.  
Found: 1924 B.T.s as follows  
8" now 13" fir S.83°W. 37.6 ft. now down, open and shows scribe marks.  
18" now 25" fir, N.9°W. 33.7 ft. Alive, shows good scar.  
No trace of 1924 G.L.O. Brass cap.  
Set: 1" I.P. and brass cap mkd. County Surveyor's Office  
T 26 S R 3 W M.C. S9  
1971

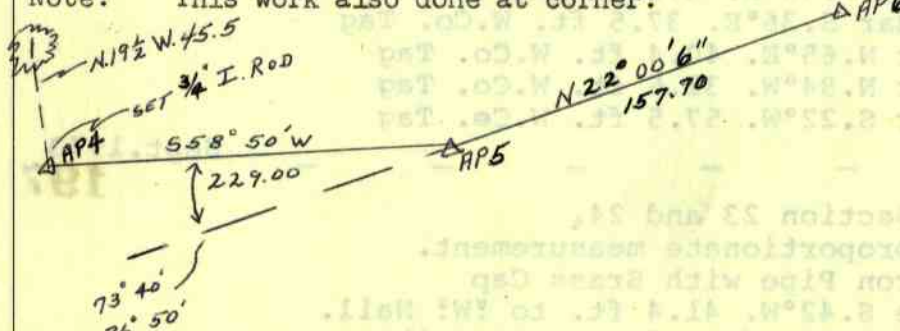
This corner falls at the base of a 42" D. fir and on the north side.  
1924 Brass Cap probably washed out by high water. 12/3/71

188

Witness Corner Angle Point 2 of Power Reserve  
W.  $\frac{1}{16}$  corner S 9 bears S.0°07'E., 74.6 ft.  
S 16  
Found: Old bearing tree mkd. in 1924.  
a 20" now 26" Fir, S.62°E., 54.8 ft. Alive, good condition.  
Shows very good axe scar. Bearing and distance also matches call distance and bearing to W.  $\frac{1}{16}$  S 9. Witness cor. falls in N. Umpqua Road. S 16  
Set: Drove a R.R. spike at point for witness corner. Due to close proximity of  $\frac{1}{16}$  cor. no other BT.s or ties made.  
12/3/71

189

Angle Point 4 Sec. 9  
Found: 12" W. Oak, now 15", N.19 $\frac{1}{2}$ °W., 45.5 ft. Opened for scribe, P.R.  
No trace of G.L.O. Brass cap as it falls in road.  
Set: 3/4" x 14" I. rod at AP 4. This falls in black topped road.  
New BT's: 12" D. Fir, N.14°E., 50.9 ft. Scribed PR AP 4 CS BT.  
Note: This work also done at corner:



(All dist. and angles hit Rec.) 12/3/71

190

Angle Point 5 Sec. 9  
Found: G.L.O. Brass cap, 1924, firmly set and properly marked.  
16" D. Fir, now 20", N.27°W., 69.3 ft. Shows scar.  
New BT: 14" Cedar, N.45°W., 2.5 ft. Scribed PR AP5 CS BT.  
Note: This corner lies S.45°E., 29.0 ft. from center line road and 42.0 ft. south from center line road.  
12/3/71

Don E. Garrett  
For R.A. Standley  
March, 1970  
Map File M 33 - 72

MARCH 7

V. "Ray" Tracy  
E. Monrean  
D. Shultz  
Dec., 1971  
C.S. File 54/7

John M. Powell  
J. Heritage  
Dec., 1971  
C.S. File 54/7