

Douglas County Surveyor's Record of
Government Corners Renewed

T 25 S. T. S. R 5 W. R. W. W. M.

KOKE-CHAPMAN CO., EUGENE, ORE. 21881

65

Section Corner to Section 7 - 8 - 17 - 18.

Found - Two BT's. recorded by Eppstein, 1931. - 12", new 18" W. O.
S.65°W. 140.4 ft., I open & find good scribing "S". *REN.#20*
24", new 30" B.O. N.83°W. 81.5 ft., shows good scars. I do
not open. No other BT's. found.
Axle set by Eppstein not found.

Set Brass Cap at Corner (Cap set 4" above corner surface), Mkd:
County Surveyor's Office, 1960

S 7 | S 8
S18 | S17 T25S R5W

RESET
BRASS CAP, 1962
BY M.E.G.
Doc. # 77

Note - Corner Set in old dirt road 3' East of Gate in EW Fence.

New BT's: Rescribe 18" W. Oak S.65°W. 140.4 ft. S18 T25S R5W CS BT.
14" Laurel bears N.58½°E. 38.5 ft. scribed S8 T25S R5W CS BT.
No trees near to S. E.

RE-RENEWED, CORNER NO. #77

66

Section Corner to Sections 14 - 15 - 22 - 23.

Found - Orig. 14", new 30" W. Oak, opened years ago, shows good
scribing "S11" N.35½°E. 120.8 ft.

Low Cut 30" B.Oak Stump, checks bearing & distance for N.W. BT.
No trace of S. E. or S. W. BT's. found.

Set Brass Cap at corner Mkd: County Surveyor's Office, 1960

S15 | S14
S22 | S23 T25S R5W

New BT's: 12" R.Fir bears N.31°W. 63.9 ft. scribed S15 T25S R5W CS BT.
9" W. Oak bears S.86°E. 20.2 ft. scribed S23 T25S R5W CS BT.
10" W.Oak bears S.47°W. 63.8 ft. scribed S22 T25S R5W CS BT.
14" Laurel bears N.52°E. 4.0 ft. scribed S14 T25S R5W CS BT.



118

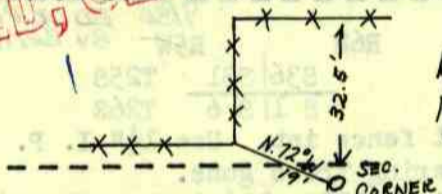
67

Section Corner to Sections 1 - 2 - 11 - 12.

Found - Both BT's. as recorded by Eppstein, 1931. *REN.#21* The N.E. BT. shows
good bark scribing. The N. W. BT, new overgrown shows good scars.
Set Brass Cap at Corner Mkd: County Surveyor's Office, 1960

S2 | S1
S11 | S12 T25S R5W

New BT's: 10" R.Fir bears N.50°E. 20.4 ft. scribed S1 T25S R5W CS BT.
12" R.Fir bears S.34°W. 12.0 ft. scribed S2 T25S R5W CS BT.
8" R.Fir bears S.62°E. 21.2 ft. scribed S12 T25S R5W CS BT.

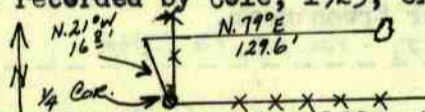


RE-RENEWED, CORNER NO. #132

68

1/4 Section Corner to Sections 23 and 26.

Found - Both BT's. as recorded by Cole, 1923, except NE BT. which is thus: *REN.#16*



I open Cole's S.E. BT., new 14" W. Oak S.12°E. 49.0 ft. & find good
scribing "C".

Set Brass Cap at Corner Mkd: County Surveyor's Office, 1960

1/4 S23
S26 T25S R5W

New BT's: 30" R.Fir bears S. 1°E. 25.3 ft. scribed 1/4 S26 CS BT.
10" R.Fir bears N.47°E. 3.8 ft. scribed 1/4 S23 CS BT.

69

1/4 Section Corner to Section 22 and 23.

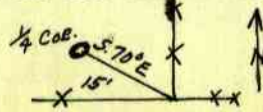
Found - No Orig. BT's. Cole's S.71°W. 51.5 ft., new 24" Stump,
shows good bark scribing "BT". The S.E. BT. in logging
road not found. *REN.#14*

Set Brass Cap at corner Mkd: County Surveyor's Office, 1960

1/4 S22/S23 T25S R5W

New BT's: 6" R.Fir bears N.36°E. 13.8 ft. scribed 1/4 S23 CS BT.
5" R.Fir bears N.75°W. 34.4 ft. scribed 1/4 S22 CS BT.

Note - Scribing on each BT. on one face only. Fence Corner Thus:



James W. Byren, Deputy County Surveyor
Mile Godfrey
Clete Putnam
May and June 1960
C. S. File No. 49/124