

Douglas County Surveyor's Record of  
Government Corners Renewed

25 T. S. 5 R. W. W. M.

KOKE-CHAPMAN CO., EUGENE, ORE. 21881

60

Section Corner to Sections 8, 9, 16 and 17.

Found - Orig. 24", now 30" Rotted Oak, down & out of position, about 8 ft. downhill. I find good reverse scribing "R5WTBT".

Stump Hole & remnants of Oak N.69°W. 23.8 ft., old & rotted Stump, that shows old axe marks & checks record dist. & bear. for Orig. N. E. BT. No scribing found.

Set Brass Cap at Corner Mkd: County Surveyor's Office, 1960

S 8	S 9	T25S R5W
S17	S16	

New BT's: 11" R.Fir bears S.77°E. 32.6 ft. scribed S16 T25S R5W CS BT.  
11" R.Fir bears N.62°E. 59.8 ft. scribed S 9 T25SR5W CS BT.  
5" R.Fir bears N.71°W.52.8 ft. scribed S 8 CS BT.  
16" R.Fir bears S.42°W.116.7 ft. scribed S17 T25S R5W CS BT.

61

1/4 Section Corner to Sections 7 and 8.

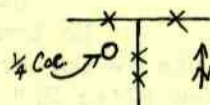
Found - 1 1/2" Iron Pipe at Corner & now 44" Fir N.29°E. 13.9 ft, measured from face, shows good scar, I do not open. *REN.#9*

S. E. BT. gone. 36" B.Oak Stump, rotted S.45°W. 25.1 ft.

New BT's: Rescribe, now 44" Fir N.29°E. 15.9 ft. (bark scribe),  
1/4 S8 CS BT.

11" R.Fir S.82°W. 44.3 ft. scribed 1/4 S 7 CS BT.

Note - Fence Corner bears Approx. N.20°E. 25 feet.



62

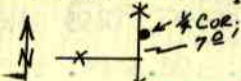
1/4 Section Corner Sec. 30, T25S R5W & Sec. 25, T25S R6W.

Found - I believe we have found both Orig. BT's., no scribing found. Orig. 24", now 28" Oak Snag N.12°W. 11.2 ft., shows good scars but old faces rotted.

Orig. 18", now 22", now down S.55°E. 26.4 ft., record 59.4 ft., shows good scars but old faces rotted.

Also find lower section of old pointed Stake at corner.

Fence Corner Thus:



Set Brass Cap at Corner Mkd: County Surveyor's Office, 1960

1/4 S25/S30  
R6W R5W

New BT's: 11" Fir bears N.24°E. 20.2 ft. scribed 1/4 S30 CS BT.  
10" R.Fir bears S.58°W. 35.2 ft. scribed 1/4 S25 CS BT.

63

1/4 Section Corner to Sections 30 and 31.

Found - I believe we have found both Orig. BT's. No scribing found on either BT. Orig. 12", now 22" W.Oak N.51°W. 78.5', opened about 40 yrs. age, old face rotted.

Orig. S. W. BT., now down & badly rotted, checks record bearing & distance.

Fence Corner Thus:



New BT's: 10" R.Fir bears N.63°E. 41.0 ft. scribed 1/4 S30 CS BT.  
7" R.Fir bears S.40°W. 8.0 ft. scribed 1/4 S31 CS BT.

Set Brass Cap at Corner Mkd: County Surveyor's Office, 1960

S30	T25S R5W
S31	

64

1/4 Corner of Sec. 6, T25-5W & Sec. 1, T25-6W.

Found - Both Orig. BT's. Orig. 18", now 30" B.O. N.22 1/2°W. 29.0 ft., I open & find good scribing "S".

Orig. 14", now 25" B.O. N.60°E. 8.0 ft., shows old scars.

Fence and Corner thus:



Set Brass Cap at Corner Mkd: County Surveyor's Office, 1960

1/4 S1/S6 T25S  
R6W R5W

F.O.O.K. 8-8-63-M.E.G.

New BT's: 10" B.O. bears N.74°W. 42.8 ft. scribed 1/4 S 1 CS BT.  
17" B.O. bears S.41°E. 20.2 ft. scribed 1/4 S 6 CS BT.

James W. Byron, Deputy County Surveyor  
 Milo Godfrey  
 Cleve Putnam  
 May 4, 1960  
 C. S. File No. 49/124

RE-RENEWED, SEE CORNER NO. 81