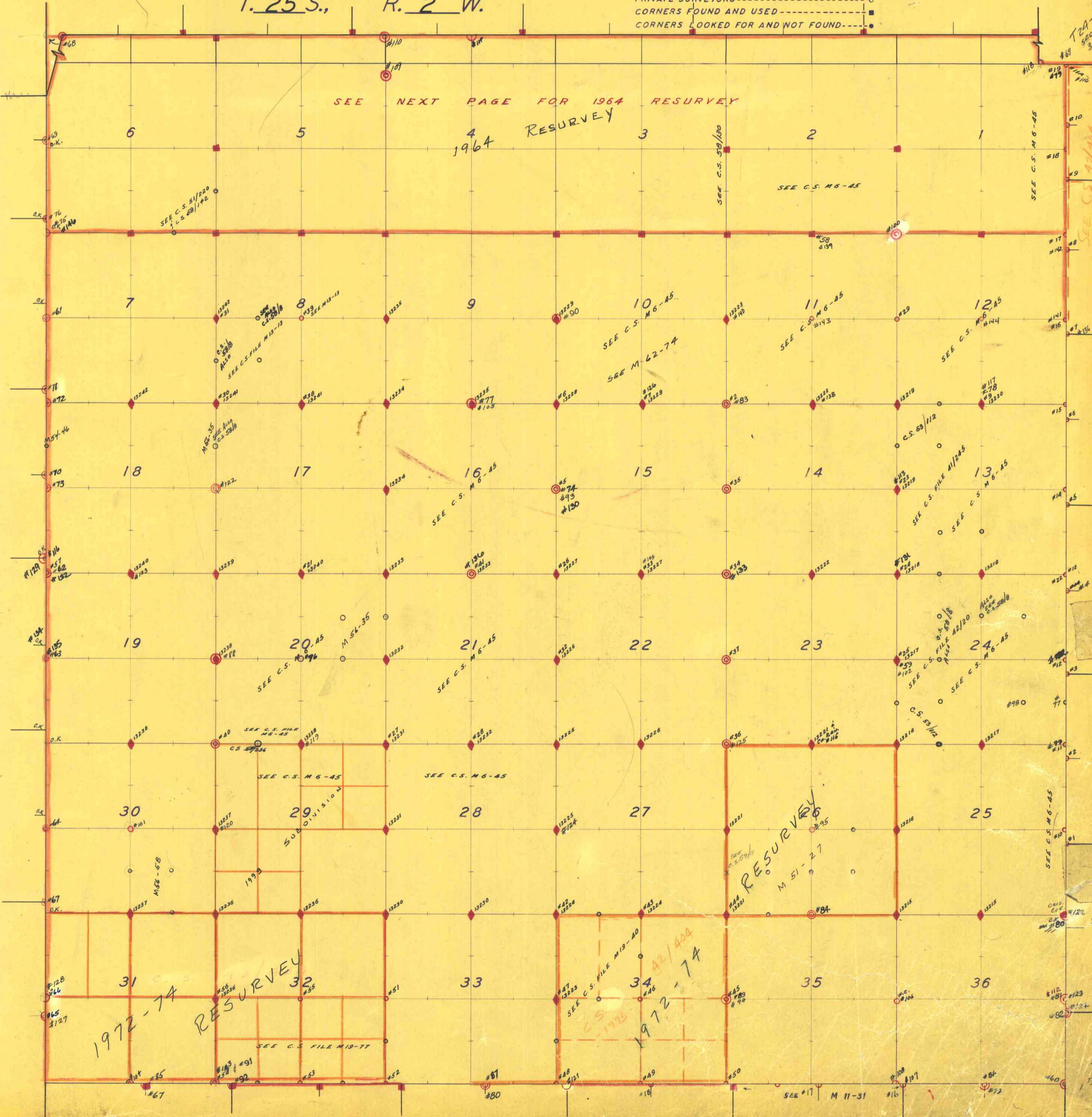


T. 25 S., R. 2 W.

CORNERS RENEWED BY  
 BUREAU OF LAND MANAGEMENT -----  
 COUNTY SURVEYOR'S OFFICE -----  
 PRIVATE SURVEYORS -----  
 CORNERS FOUND AND USED -----  
 CORNERS LOOKED FOR AND NOT FOUND -----

SEE NEXT PAGE FOR 1964 RESURVEY

1964 RESURVEY



1972-74 RESURVEY

RESURVEY

1972-74 RESURVEY

T2A-1

SEE C.S. M 6-45

SEE C.S. M 6-45

SEE C.S. M 6-45

SEE C.S. M 6-45

SEE C.S. M 6-45

SEE C.S. M 6-45

#68

#69

#70

#71

#72

#73

#74

#75

#76

#77

#78

#79

#80

#81

#82

#83

#84

#85

#86

#87

#88

#89

#90

#91

#92

#93

#94

#95

#96

#97

#98

#99

#100

#101

#102

#103

#104

#105

#106

#107

#108

#109

#110

#111

#112

#113

#114

#115

#116

#117

#118

#119

#120

#121

#122

#123

#124

#125

#126

#127

#128

#129

#130

#131

#132

#133

#134

#135

#136

#137

#138

#139

#140

#141

#142

#143

#144

#145

#146

#147

#148

#149

#150

#151

#152

#153

#154

#155

#156

#157

#158

#159

#160

#161

#162

#163

#164

#165

#166

#167

#168

#169

#170

#171

#172

#173

#174

#175

#176

#177

#178

#179

#180

#181

#182

#183

#184

#185

#186

#187

#188

#189

#190

#191

#192

#193

#194

#195

#196

#197

#198

#199

#200

#201

#202

#203

#204

#205

#206

#207

#208

#209

#210

#211

#212

#213

#214

#215

#216

#217

#218

#219

#220

#221

#222

#223

#224

#225

#226

#227

#228

#229

#230

#231

#232

#233

#234

#235

#236

#237

#238

#239

#240

#241

#242

#243

#244

#245

#246

#247

#248

#249

#250

#251

#252

#253

#254

#255

#256

#257

#258

#259

#260

#261

#262

#263

#264

#265

#266

#267

#268

#269

#270

#271

#272

#273

#274

#275

#276

#277

#278

#279

#280

#281

#282

#283

#284

#285

#286

#287

#288

#289

#290

#291

#292

#293

#294

#295

#296

#297

#298

#299

#300

#301

#302

#303

#304

#305

#306

#307

#308

#309

#310

#311

#312

#313

#314

#315

#316

#317

#318

#319

#320

#321

#322

#323

#324

#325

#326

#327

#328

#329

#330

#331

#332

#333

#334

#335

#336

#337

#338

#339

#340

#341

#342

#343

#344

#345

#346

#347

#348

#349

#350

#351

#352

#353

#354

#355

#356

#357

#358

#359

#360

#361

#362

#363

#364

#365

#366

#367

#368

#369

#370

#371

#372

#373

#374

#375

#376

#377

#378