

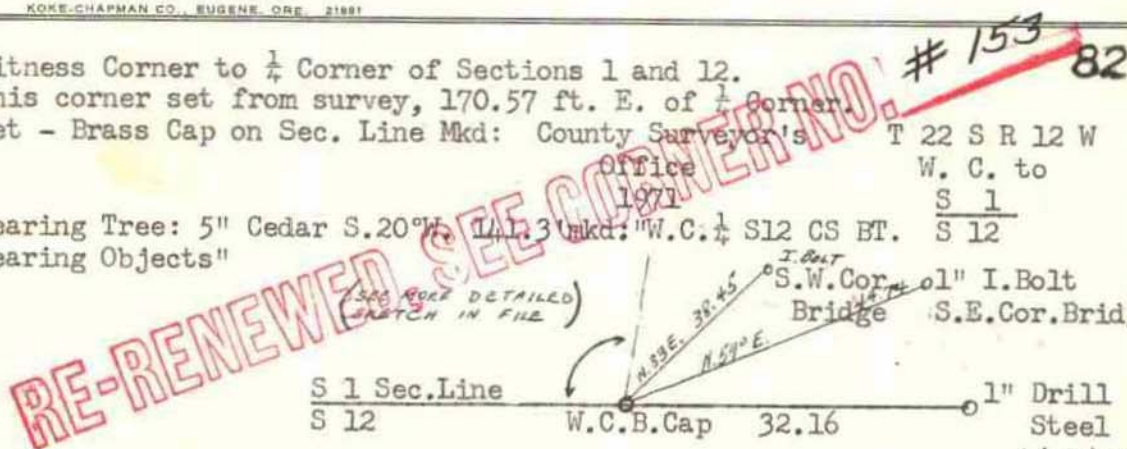
Douglas County Surveyor's Record of  
Government Corners Renewed

T. 22 S. T. S. R. 12 W R.W.W.M.

KOKE-CHAPMAN CO., EUGENE, ORE. 21881

Witness Corner to  $\frac{1}{4}$  Corner of Sections 1 and 12.  
This corner set from survey, 170.57 ft. E. of  $\frac{1}{4}$  Corner  
Set - Brass Cap on Sec. Line Mkd: County Surveyor's Office 1971  
T 22 S R 12 W  
W. C. to  
S 1  
S 12

Bearing Tree: 5" Cedar S. 20° W. 14.3 ft. mkd: "W.C.  $\frac{1}{4}$  S12 CS BT."  
Bearing Objects: 1" I. Bolt S.W. Cor. Bridge  
1" S.E. Cor. Bridge



Section Corner 1 & 12, T22-12W. *Brass Cap Gone - 7/93*  
Corner set from survey & lies in bottom of ravine, running N - S.  
Set - Brass Cap at Cor. Mkd: County Surveyor's Office 1971  
R T 22 W R  
S 6 11  
S 7 CC W

Bearing Trees: 10" Maple West 41.5 ft. scribed "T22S R12W S1 CS BT".  
10" D. Fir N. 77 $\frac{1}{2}$ ° E. 24.0 ft. mkd: "T22S R11W. S6 CS BT".  
14" D. Fir S. 40° W. 60.2 ft. scribed "T22S R12W S12 CS BT".  
6/8/71

C1. Section Corner to Secs. 6 & 7 only, T22-11W. 84

Corner set from survey  
Set - Brass Cap at Cor. Mkd: County Surveyor's Office 1971  
R T 22 W R  
S 6 11  
S 7 CC W

Bearing Trees: 13" Alder S. 14° W. 15.4 ft. scribed "T22S R12W S12 CS BT".  
8" Alder S. 20° E. 17.9 ft. scribed "T22S R11W S 7 CC CS BT".  
5/8" I. Rod N. 46° E. 20.0 ft., this rod lies on westerly edge of marshy ground.  
6/8/71

Sec. Cor. to Secs. 35 & 36, T21-12W. & Secs. 1 & 2, T22-12W. 85

Found - 48" Cedar Stump S. 66° E. 47.6 ft., frag. scribing found. High cut cedar stump shows old axe work & possible scribe marks made at least 60 years ago (ring count) Checks call to creek & checks dist. for Orig. S.E. BT.

No orig. BT's. found.

Old squared Stake at approx. location of corner lying on ground.  
Also find old blazed trees west of this

Set - Brass Cap at Cor. Mkd: County Surveyor's Office, 1971  
T21S S 35 S 36  
T22S R12W S 2 S 1

New BT's: 16" D. Fir N. 35° W. 30.3 ft. scribed "T21S R12W S35 CS BT".  
9" Alder N. 87° E. 23.0 ft. scribed "T21S R12W S36 CS BT".  
6" Alder S. 40° E. 24.9 ft. scribed "T22S R12W S1 CS BT".  
8" Alder S. 78° W. 12.4 ft. scribed "T22S R12W S2CS BT".

This corner lies 10.0 ft. W. of creek, checks call.

$\frac{1}{4}$  Corner to Sec. 35, T21-12W. & Sec. 2, T22-12W. 86

This corner set from survey & call of 2.50 ch. E. to creek checks good.

Set - Brass Cap at Cor. Mkd: County Surveyor's Office, 1971  
T21S R12W  $\frac{1}{4}$  S 35  
T22S S 2 S 2

New BT's: 13" Hemlock N. 53° E. 50.2 ft. scribed " $\frac{1}{4}$  S35 CS BT".  
5" D. Fir S. 21° W. 44.1 ft. scribed " $\frac{1}{4}$  S 2 CS BT".

Ref. Monument #3, Point on line W. of W. 1/16 Cor. Sections 1 and 12. 87

This corner set from survey & lies on top of small ridge about 45 ft.

West of ravine, running about S. 70° E. 287.24 ft. W. of W. 1/16th Cor.

Set - Brass Cap at Point Mkd: County Surveyor's Office 1971  
T 22 S R 12W  
R M 3 S 1  
S 12

Bearing Trees: 8" Hemlock S. 22° E. 4.2 ft. scribed "RM 3 S12 CS BT".  
16" Hemlock N. 64 $\frac{1}{2}$ ° W. 23.5 ft. scribed "RM 3 S1 CS BT".  
5/4/71

James W. Byron, County Surveyor  
John M. Powell & Crew  
For: Douglas County  
C. S. File No. 56/5  
Feb. thru June, 1971  
Map M 42 - 27

SEE ALSO  
STATE MAP  
SERIES 1987  
CS A-1