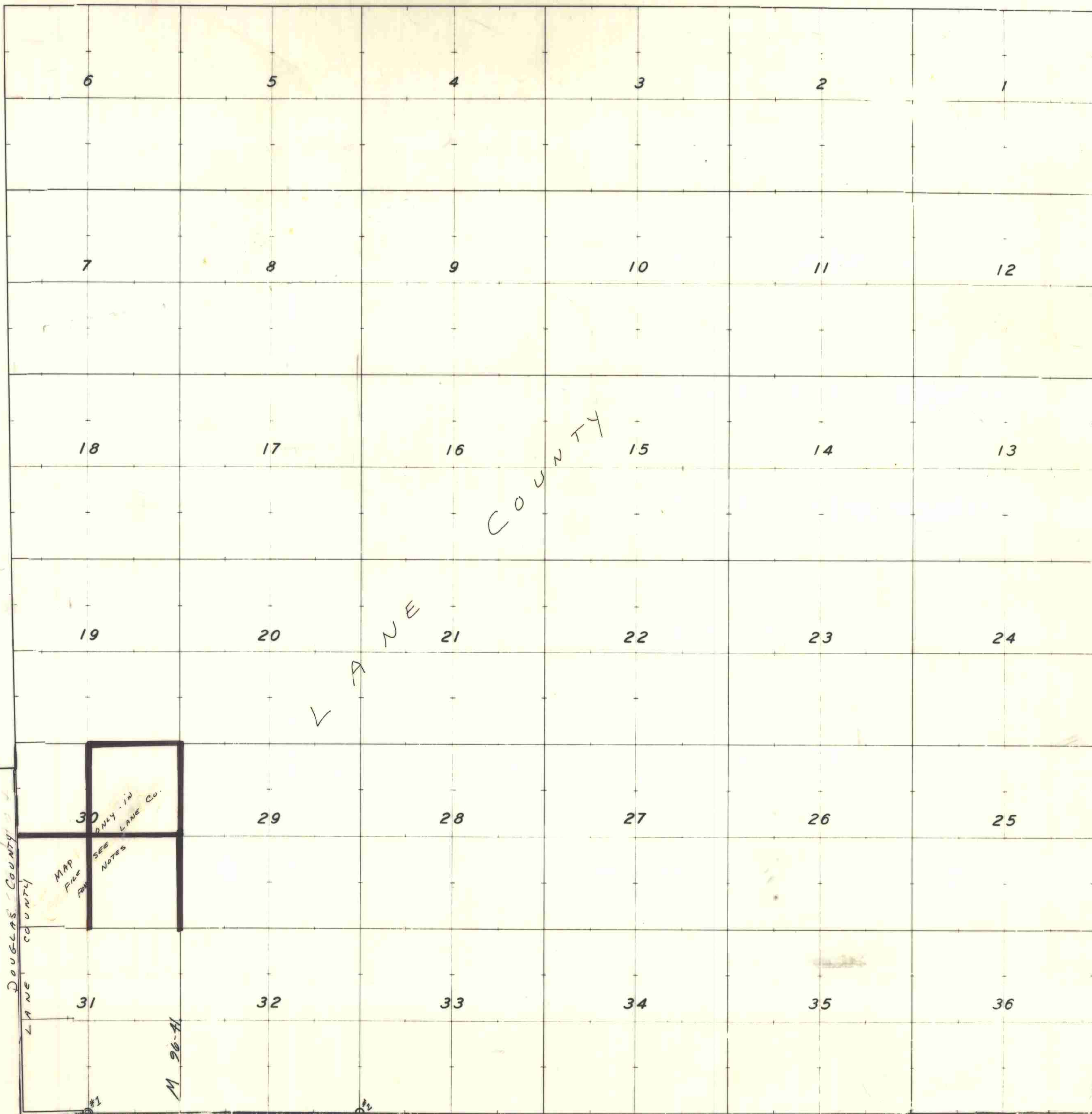


T. 19 S., R. 7 W.

CORNERS RENEWED BY  
BUREAU OF LAND MANAGEMENT -----◆  
COUNTY SURVEYOR'S OFFICE -----◎  
PRIVATE SURVEYORS -----○  
CORNERS FOUND AND USED -----■  
CORNERS LOOKED FOR AND NOT FOUND -----●



DOUGLAS COUNTY  
LANE COUNTY

MAP  
FILE  
RE  
ONLY IN  
LANE CO.  
SEE  
NOTES

M 90-41

1977

RESURVEY