

Douglas County Surveyor's Record of
Government Corners Renewed

T. 19 S. T. S. R. 10 W. R. W. W. M.

ROKE-CHAPMAN CO., EUGENE, ORE. 21881

13

John M. Powell
W. Penley & Jack Heritage
Feb. 1971 C.S. 53/66

Section Corner to Sections 11 - 12 - 13 - 14.

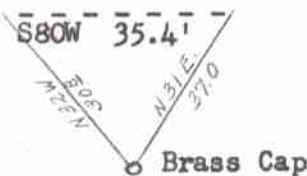
Found - Alder Corner Tree, now stump, scribe visible, "S13" #45
Iron Well Point alongside stump, Ren. #12
26" D. Fir, now stump, N. 33 1/2° E. 60.7 ft., some scribe marks visible,
mostly grown over.
Possible Orig. Fir, 14" now 46", S. 38° E. 57.4 ft., shows gaint
scar. I do not open because corner is in clear-cut unit
with no bearing trees available.

Set - Brass Cap alongside Well Point & corner stump mkd:
County Surveyor's Office T 19 S R 10 W
1971 S 11 | S 12
S 14 | S 13
Set Steel Fence Post alongside Br. Cap

New Bearing Stump & Objects:

30" D. Fir Stump S. 6° W. 38.7 ft. scribed T29S R10W S14 CS BT.
5/8" I. Rod Set 5/8" I. Rod Set

COR. FO. GOOD CONDITION
4/1/78 - E. ALVARADO
USFS - Deputy - Co. Surveyors
Office - C.S. 60/17



Feb. 1971

MARCH 71
14

Section Corner to Sections 25 - 26 - 35 - 36.

Found an old blazed line running S. from the N. Fork Smith River and
another running E. from the river. We determined this to be the orig.
sec. line blazes by chopping out several blazes & finding them to be
70-75 yrs. old, which dates back to the orig. survey. Other blazes
were as recent as 50 years old. The calls on the river to the N. & W.
& a ridge to the E. were checked & found to agree well with the G.L.O.
calls from the intersection of the blazed lines.

No Orig. BT's. were found

Double proportion would place this corner approximately 190 ft. N. &
5-600 feet W. of the river versus the calls of 660 ft. S. & 858 ft. E.
or grossly out of position. Hence the blaze intersection was used
for positioning the corner.

At the intersection of blazed lines, I set a 2"x36" galv. iron pipe,
flanged at the bottom & capped with a bronze disk welded on top. The
monument projects 6" above the ground. I filled in around the pipe
monument with stone & packed earth. I stamped the disk T 19 S R 10 W

S 26 | S 25
S 35 | S 36
1971

I established new BT's., as follows: Each BT has a
scribed face & a U.S.F.S. BT tag breast high & facing the monument,

- a 20" D. Fir bears N. 6° E. 30.7 feet.
- a 32" D. Fir bears N. 13° W. 33.1 feet.
- a 22" D. Fir bears S. 50° W. 53.90 feet.
- a 26" D. Fir bears S. 68° E. 21.0 feet.

FD. 3/28/80
E. ALVARADO
U.S. FOR. SERVICE
C.S. 61/6

James W. Prochnau
For U.S. Forest Service
July 29, 1971 C.S. File No. 55/206
Map File M 43 - 22

1/4 Corner to Sections 35 and 36.

No evidence found of the original corner. At the properly proportioned
distance, I placed 2"x36" galv. iron pipe, flanged at the bottom & capped
with a bronze disk welded on the top. The monument projects 6" above
the ground. I filled in around the pipe monument with stone & packed earth
I stamped the disk 1/4 S 35 | S 36

1971
4185

I established new BT's., as follows. Each BT. has a scribed face & a
U.S.F.S. BT. sign breast high & facing the monument

- a 20" D. Fir bears N. 54° W. 27.5 feet
- a 46" D. Fir bears S. 39° E. 12.0 feet

*

1/4 Corner to Sections 25 & 36.

No evidence found of Orig. Cor. At Properly prop. position. I placed a
2"x36" galv. I.P., flanged at the bottom & capped with br. disk, monument
projects 6" above ground, filled in around with stone and packed earth.

I stamped the disk 1/4 S 25
S 36
1971
4185

FD. 3/27/80
E. ALVARADO
U.S. FOR. SERV. 1/6
C.S. 61/6
(continued over)

16