

LANE COUNTY SURVEYORS OFFICE
DEPARTMENT OF PUBLIC WORKS

PAGE 1 OF 2
FILE NO: 25-25-06 NW C.C.
INDEX NO: 4632

CORNER REPORT

THE CLOSING CORNER TO SECTION 6, T25S, & SECTION, 31, T24S, R2E, W.M.

DATE	1927
SURVEYOR	COLLINS
SOURCE	GLO R529
MONUMENT FOUND	
MONUMENT SET	20"x 15"x 10" BASALT STONE MARKED WITH "24S" ON THE NORTH, "CC 2E AND SIX GROOVES" ON THE EAST, "25S" ON THE SOUTH FACE.
FOOTNOTE	1
BEARING OBJECT 1	24" FIR N73°E 82 LKS = 54.1' MARKED "T24S R2E S31 CC BT"
BEARING OBJECT 2	3" FIR S53°E @ 169 LKS = 111.5' MARKED "T25S R2E S6 CC BT"

FOOTNOTES: 1) THE ORIGINAL STANDARD SECTION CORNER SET BY GESNER IN 1898, CHANGED BY COLLINS IN 1927 "...TO REFER TO TPS. 24 AND 25 S. , R. 1 E. ONLY" BRS S0°31'W @ 9.96 CHS = 657.4'
BOLDED ENTRIES IN CORNER HISTORY CORRESPONDS WITH OBJECTS DESCRIBED IN EVIDENCE RECOVERED. BEARING OBJECTS SHOWN ABOVE AND NOT MENTIONED IN "EVIDENCE RECOVERED" WERE SEARCHED FOR NOT FOUND.

CORNER EVIDENCE

EVIDENCE RECOVERED: AT THE CORNER POSITION FOUND A FIRMLY SET 6" x 7" PYRAMIDAL SHAPED STONE PROJECTING 12" ABOVE GRADE ON A STEEP HILL SIDE, 50' DOWN HILL FROM A GRAVEL ROAD, AND MARKED PER THE 1927 GLO SURVEY. THE HIGHPOINT LOCATED ON THE NORTHEAST EDGE OF THE STONE WAS USED AS THE CORNER POINT. FOUND THE STONE WITH MARKS "24S" ON THE NORTH FACE, "25S" ON THE SOUTH FACE, AND "CC 2E" AND SIX GROOVES ON THE EAST FACE.

1927 [1] A 34" FIR WITH HEALED FACE BRS N73° 22'20"E @ 54.47' TO FACE, 55.4' TO CENTER, AND 36.9' TO A SILVER MAGNET. (N73°E @ 82 LKS = 54.1')

MONUMENT SET: NOTHING NEEDED. ACCEPTED THE STONE AS MARKING THE CORNER POSITION.

ACCESSORIES ESTABLISHED:

2005 [3] AN 8" MAPLE, BLAZED AND SCRIBED "CSBT" BRS S20°33'E @ 22.97' TO FACE, 23.3' TO CENTER, AND 17.3' TO A PINK MAGNET.

2005 [4] SET A 2" ALUM. CAP "LCSO-RP1 2005" ATOP A 5/8" x 30" REBAR BRS N88°34'10"W @ 104.60'

2005 [5] SET A 2" ALUM. CAP "LCSO-RP2 2005" ATOP A 5/8" x 30" REBAR BRS N20°09'30"W @ 49.11'

NOTES AND OTHER INFORMATION

HOW TO REACH: FROM THE INTERSECTION OF STATE HWY. 138 AND FOREST SERVICE ROAD #38 (39 MILES EAST OF ROSEBURG), GO 10 MILES UP ROAD 38 (STEAMBOAT CREEK) TO ROAD 3815 ON LEFT. GO UP IT 5.5 MILES TO ROAD 025 ON RIGHT. GO UP IT 0.5 MILES TO A LOCATION TAG ON A LARGE FIR ON THE RIGHT. FROM TAG WALK N60°E @ 90' TO THE CORNER.

GEOGRAPHIC MAP LOCATION: USE FOR NAVIGATION TO CORNER AREA – NOT OF SURVEY GRADE ACCURACY. LATITUDE = N43°26'24".6, LONGITUDE = W122°37'21".7, NAD 83/91 VALUES.

BASIS OF BEARING: BEARINGS ARE TRUE PER GPS OBSERVATIONS.

EQUIPMENT USED: WILD TC-1010 TOTAL STATION & HP-48 GX DATA COLLECTOR.

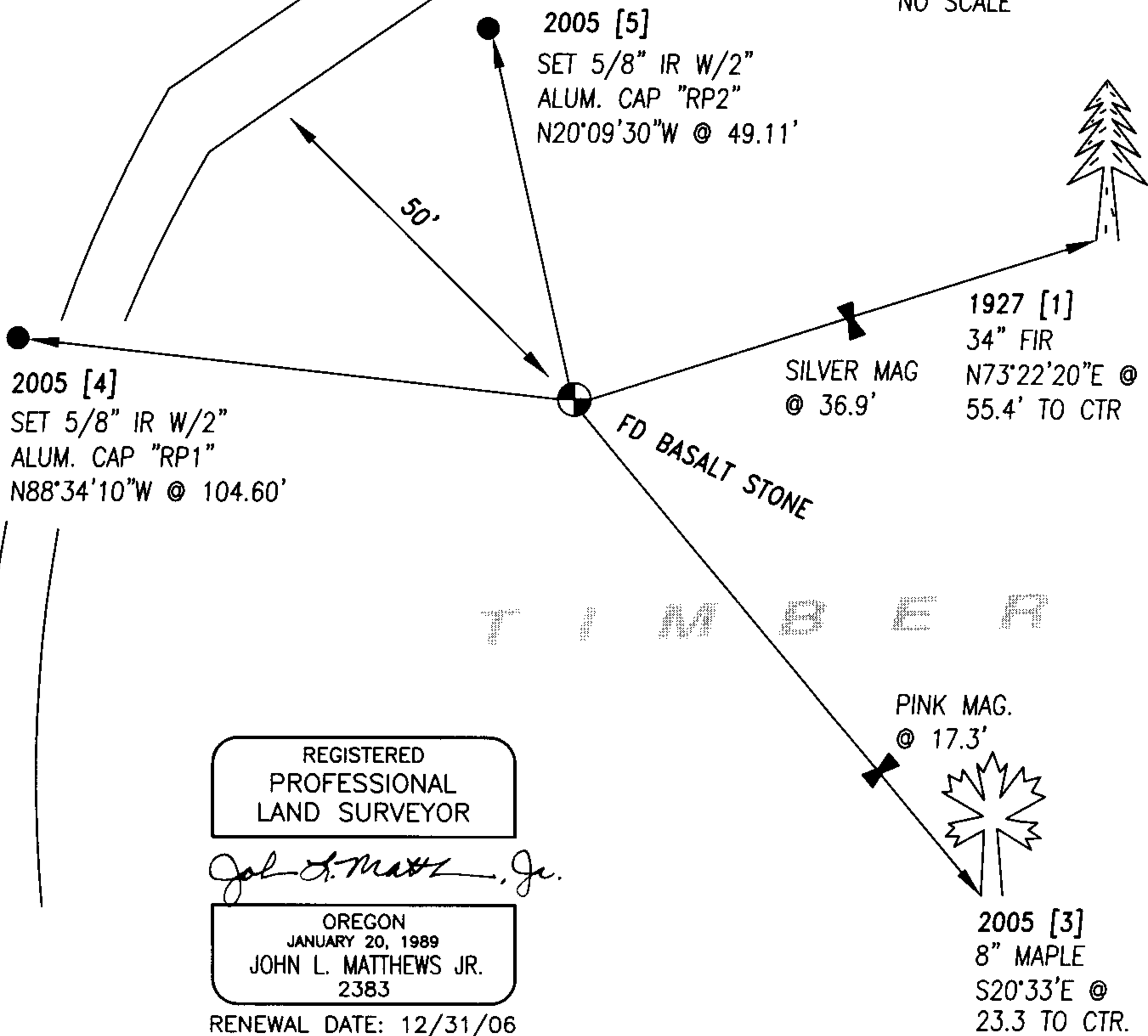
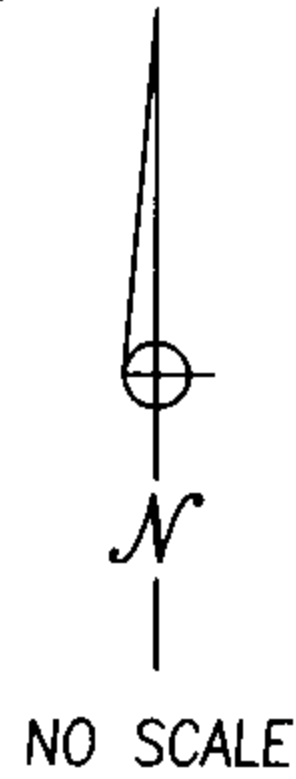
BEARING TREES: DISTANCE TO FACE REFERS TO A P-K NAIL & BRASS WASHER DRIVEN INTO THE BOTTOM OF THE FACE OF NEW BT's, OR IN A NOTCH JUST BELOW THE HEALED BLAZE IN FOUND BT's.

DATE: AUGUST 23, 2005

BY: BRUCE BOTHEL, P.L.S. ASSOCIATE SURVEYOR *BB*
CHRIS LARSON, ENGINEERING TECH.1 *CL*

REPROD

FOREST SERVICE GRAVEL ROAD #205



REGISTERED
PROFESSIONAL
LAND SURVEYOR

John L. Matthews, Jr.

OREGON
JANUARY 20, 1989
JOHN L. MATTHEWS JR.
2383

RENEWAL DATE: 12/31/06