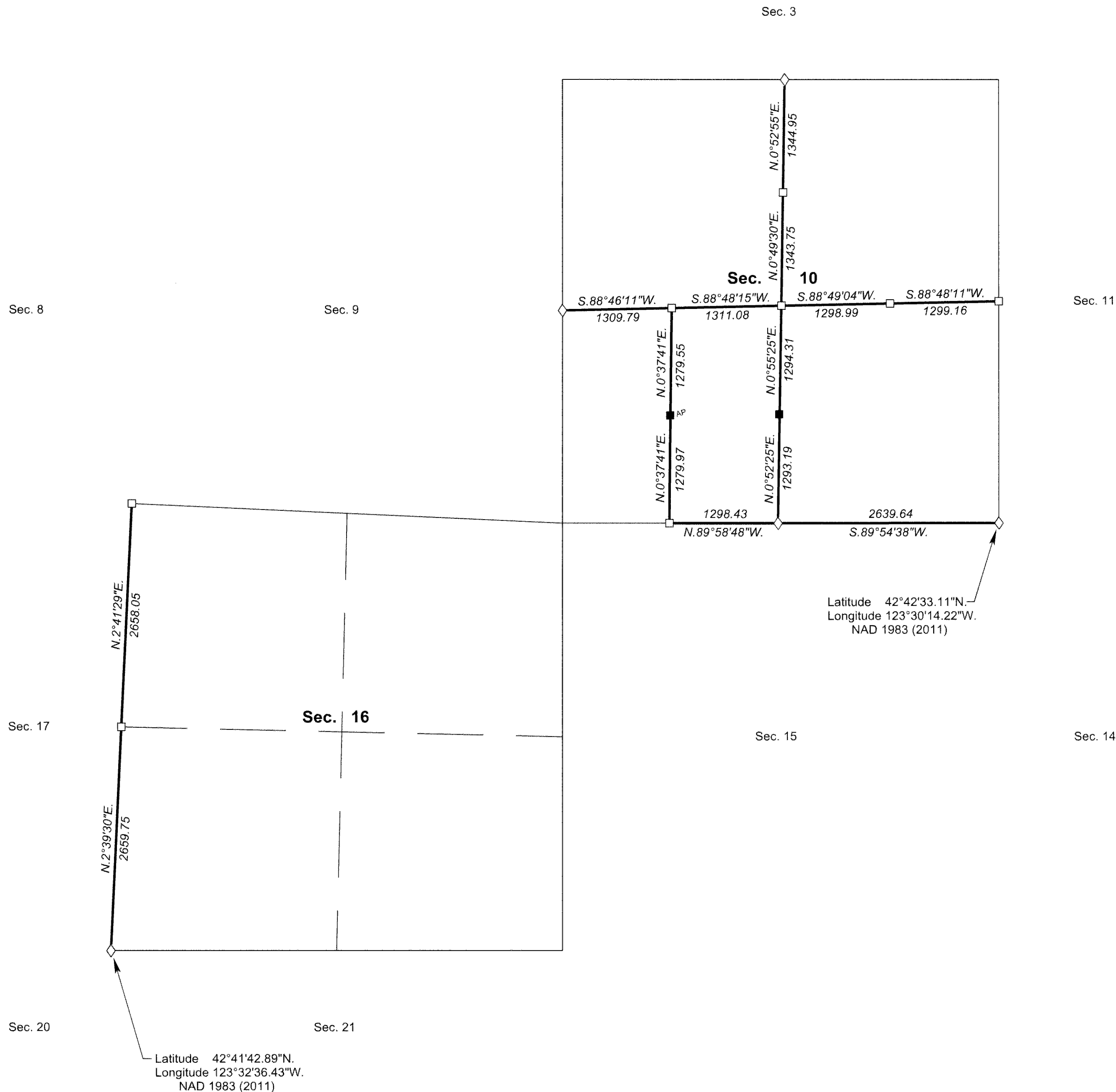
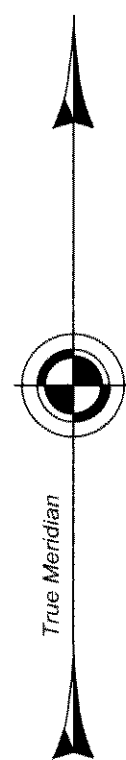


TOWNSHIP 33 SOUTH, RANGE 7 WEST, OF THE WILLAMETTE MERIDIAN, OREGON

DEPENDENT RESURVEY AND SUBDIVISION OF SECTION 10



A history of surveys, corner descriptions, and other relevant information are contained in the field notes.

This plat represents the dependent resurvey of a portion of the subdivisional lines, designed to restore the corners in their true original locations according to the best available evidence, and the subdivision of section 10, Township 33 South, Range 7 West, Willamette Meridian, Oregon.

The lottings and areas are as shown on the plats approved May 31, 1882, and July 17, 1902.

Survey executed by Kevin G. Mulder, Cadastral Surveyor, beginning April 16, 2014, and completed May 27, 2014, pursuant to special instructions approved February 19, 2014, for Group No. 2739, Oregon.

FILED

Date: 9/21/2015 By: JC

This survey consists of:

Map: T33-7W 2015-1

Narrative: VOL 58 PAGES

Corner Rpt: 23243-23255

DOUGLAS COUNTY
SURVEYOR

LEGEND

- ◊ Original corner previously remonumented
- Corner previously established or reestablished
- Corner previously established or reestablished; remonumented this survey

UNITED STATES DEPARTMENT OF THE INTERIOR
BUREAU OF LAND MANAGEMENT

Portland, Oregon

This plat is strictly conformable to the approved field notes, and the survey, having been correctly executed in accordance with the requirements of law and the regulations of this Bureau, is hereby accepted.

For the Director

F. David Bradford (Acting)

Chief Cadastral Surveyor of Oregon

June 18, 2015

Date

OFFICIALLY FILED: 8/24/2015