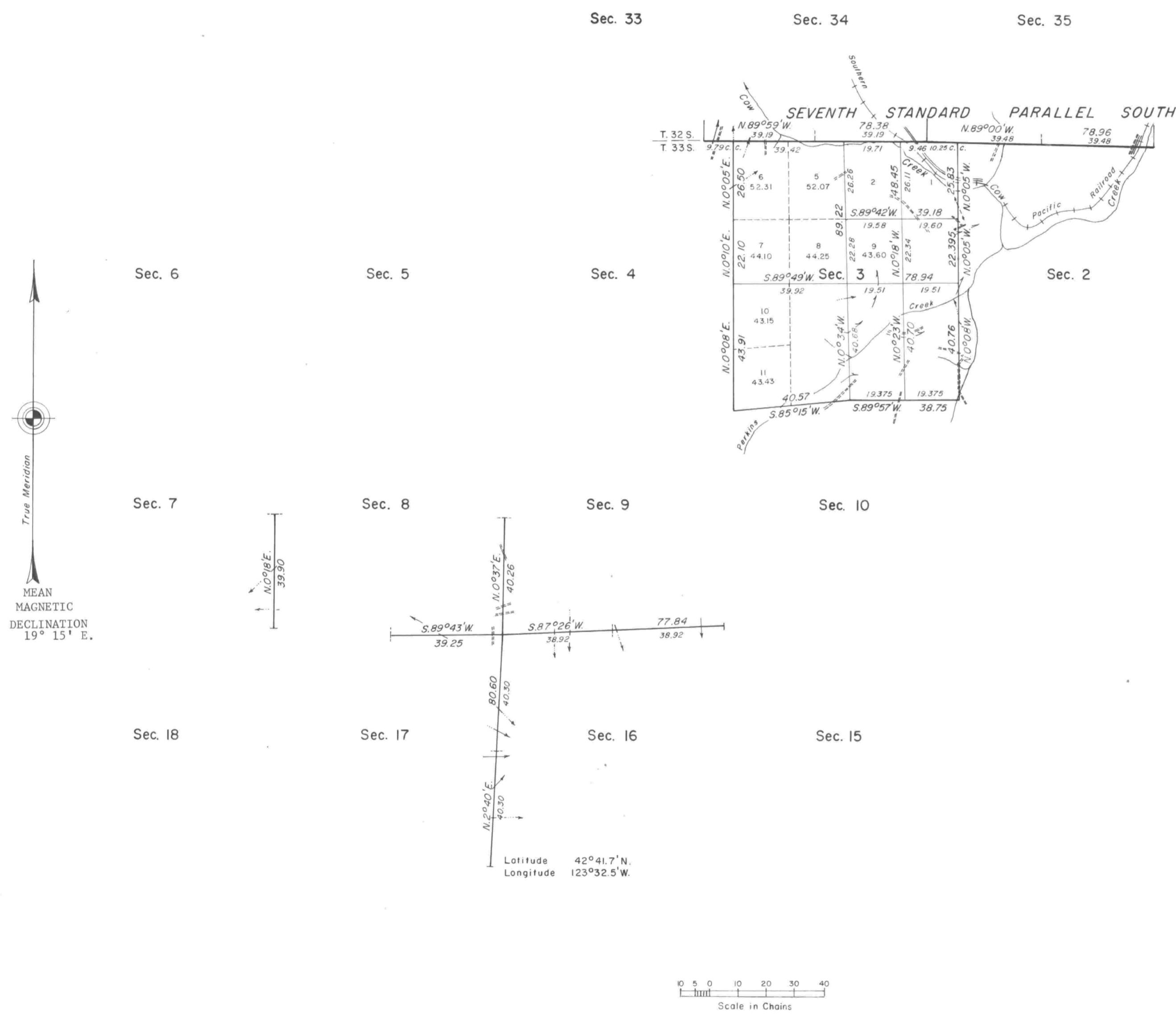


# TOWNSHIP 33 SOUTH, RANGE 7 WEST, OF THE WILLAMETTE MERIDIAN, OREGON.

## DEPENDENT RESURVEY AND SUBDIVISION OF SECTION 3



This plat represents a dependent resurvey of a portion of the Seventh Standard Parallel South (south boundary, T. 32 S., R. 7 W.), and a portion of the subdivisional lines, designed to restore the corners in their true original location according to the best available evidence, and the subdivision of section 3, T. 33 S., R. 7 W., Willamette Meridian, Oregon.

Except as shown hereon, the lottings and areas are as shown on the plats approved May 31, 1882, and July 17, 1902.

The Seventh Standard Parallel South (south boundary, T. 32 S., R. 7 W.) and a portion of the subdivisional lines, T. 33 S., R. 7 W., were surveyed by William H. Byars, in 1882.

The north four miles of the west boundary of the township and that portion of the subdivisional lines needed to complete the township were surveyed by Oscar F. Thiel, in 1901.

The 1/4 section corner of sections 7 and 8 and certain other original corner points on the west boundary of the township were remonumented without survey by Joseph S. Gawron, in 1966.

The boundaries of section 1 were resurveyed and the section subdivided by John M. Jelley, Rollin D. Aanrud, and Lynn M. Roseberry, in 1969-70.

The resurvey and subdivision of section were executed by Lynn M. Roseberry and Rollin D. Aanrud, Cadastral Surveyors, from April 24, 1975, to November 7, 1975, under Special Instructions dated June 10, 1974, which provide for the surveys included under Group No. 845, Oregon.

UNITED STATES DEPARTMENT OF THE INTERIOR  
BUREAU OF LAND MANAGEMENT  
Denver, Colorado July 24, 1980

This plat is strictly conformable to the approved field notes, and the survey, having been correctly executed in accordance with the requirements of law and the regulations of this Bureau, is hereby accepted.

For the Director

*J. Voorhes*

Chief, Cadastral Survey  
Examination and Approval Staff

Timber in this area consists of fir, pine, cedar, oak, alder, madrone, maple, chinquapin, and dogwood.