

TOWNSHIP 33 SOUTH, RANGE 7 WEST, OF THE WILLAMETTE MERIDIAN, OREGON. DEPENDENT RESURVEY

This plat represents a dependent resurvey of a portion of the east boundary, and subdivisional lines, T. 33 S., R. 7 W., Willamette Meridian, Oregon, designed to restore the corners in their true original location according to the best available evidence.

The east boundary of the township was surveyed by Wells Lake and George W. Hyde, in 1855.

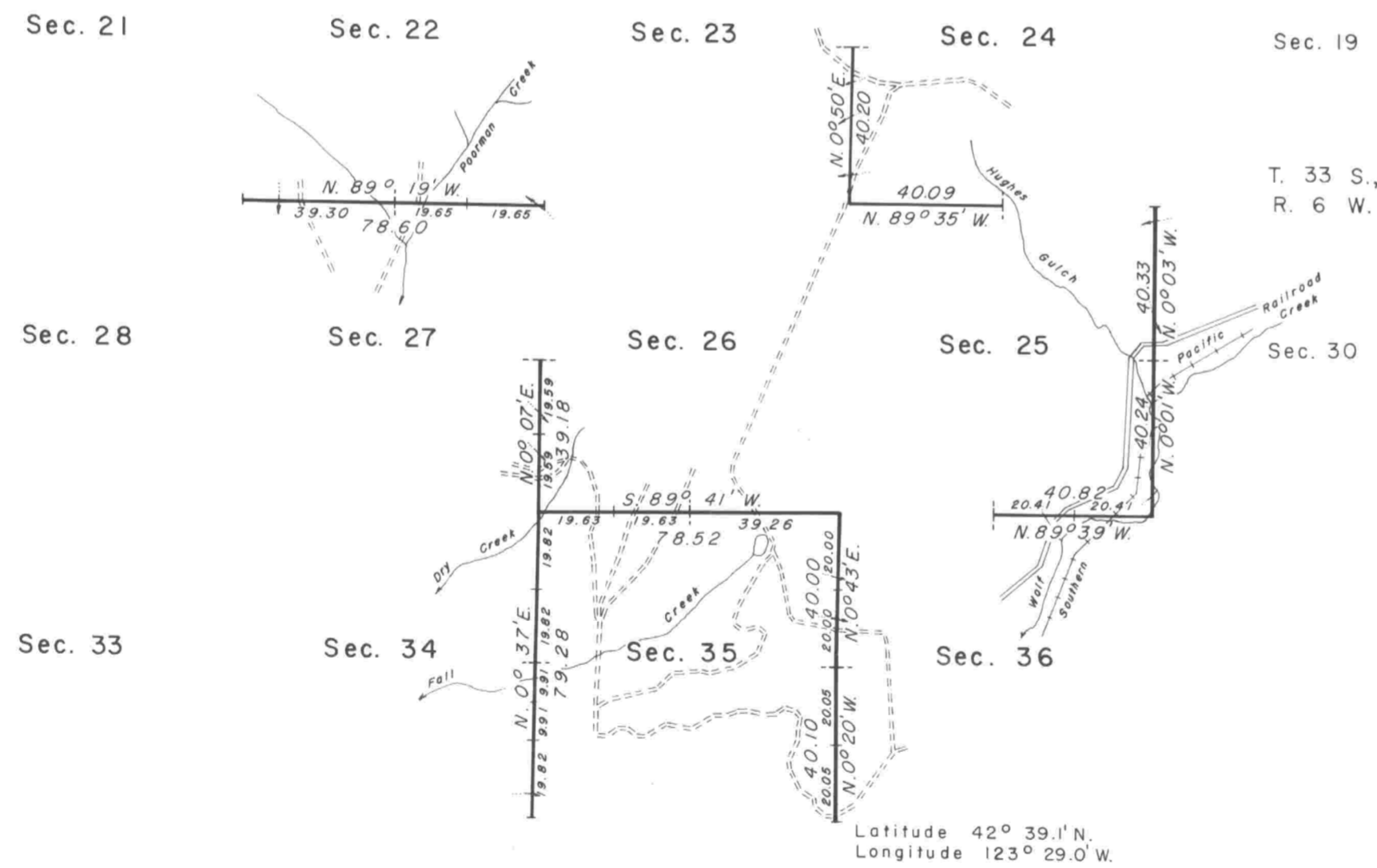
The south boundary and a portion of the subdivisional lines were surveyed by William H. Byars, in 1882.

The corner of sections 25, 30, 31, and 36, on the east boundary of the township was remonumented without survey by Joseph S. Gawron, in 1963-64.

The line between sections 3 and 34, on the south boundary of the township was resurveyed and certain original corners were remonumented without survey on the south boundary of the township by John M. Jelley and Rollin D. Aanrud, in 1966-67.

Certain corners within the township were remonumented without survey by John M. Jelley, Rollin D. Aanrud, and Lynn M. Roseberry, in 1969-70.

Survey executed by Larry D. Evans, Cadastral Surveyor, from June 7, 1973 to July 19, 1973, under Special Instructions dated March 7, 1973, which provide for the surveys included under Group No. 805, Oregon.

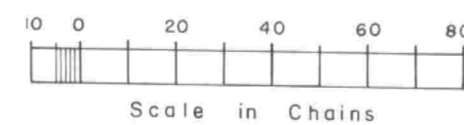


UNITED STATES DEPARTMENT OF THE INTERIOR
BUREAU OF LAND MANAGEMENT
Washington, D.C. October 19, 1977

This plat is strictly conformable to the approved field notes, and the survey, having been correctly executed in accordance with the requirements of law and the regulations of this Bureau, is hereby accepted.

For the Director

Acting Chief, Division of Cadastral Survey



Timber in this area consists of fir, oak, madrone, pine, cedar, dogwood, alder, and maple.