

JOSEPHINE COUNTY

TOWNSHIP 33 SOUTH, RANGE 6 WEST, OF THE WILLAMETTE MERIDIAN, OREGON

DEPENDENT RESURVEY AND SUBDIVISION OF SECTIONS 2, 10, AND 33

FILED

Date: 10/12/2020 By: JC

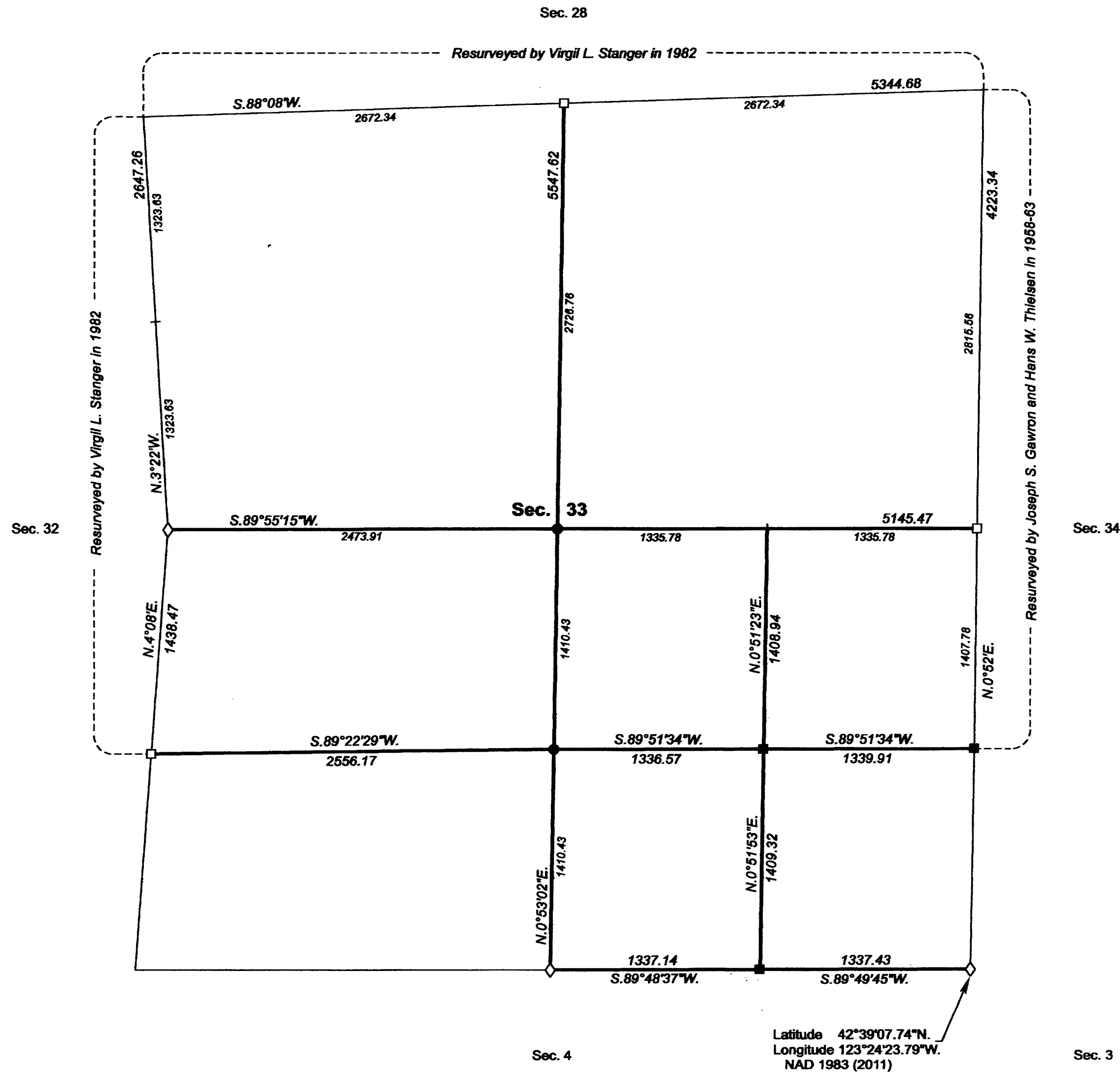
This survey consists of:

PLATS: T33-6 2020-1 and 2020-2

Narrative: VOL 59

Corner Rpt: PGS 23775-23794

DOUGLAS COUNTY SURVEYOR



LEGAL SUBDIVISION	OFFICIAL ACRES
SECTION 33	
NE1/4 NE1/4	42.74
NW1/4 NE1/4	42.10
SW1/4 NE1/4	42.11
SE1/4 NE1/4	42.75
NE1/4 NW1/4	40.71
NW1/4 NW1/4	40.12
SW1/4 NW1/4	38.58
SE1/4 NW1/4	39.18
N1/2 SW1/4	82.11
NE1/4 SE1/4	43.25
NW1/4 SE1/4	43.23
SW1/4 SE1/4	43.26
TOTAL AREA	540.15
FEDERAL INTEREST	
LAND RESURVEYED	

**LEGEND**

- ◊ Original corner previously remonumented
- Corner previously established or reestablished
- Corner previously established or reestablished; remonumented this survey
- Corner established or reestablished this survey
- + Corner point calculated, no monument set

UNITED STATES DEPARTMENT OF THE INTERIOR  
BUREAU OF LAND MANAGEMENT

Portland, Oregon

This plat is strictly conformable to the approved field notes, and the survey, having been correctly executed in accordance with the requirements of law and the regulations of this Bureau, is hereby accepted.

For the Director

*Mary J. M. Hault*

Chief Cadastral Surveyor of Oregon

July 14, 2020  
Date

D.C.W.



OFFICIALLY FILED: 8/21/2020