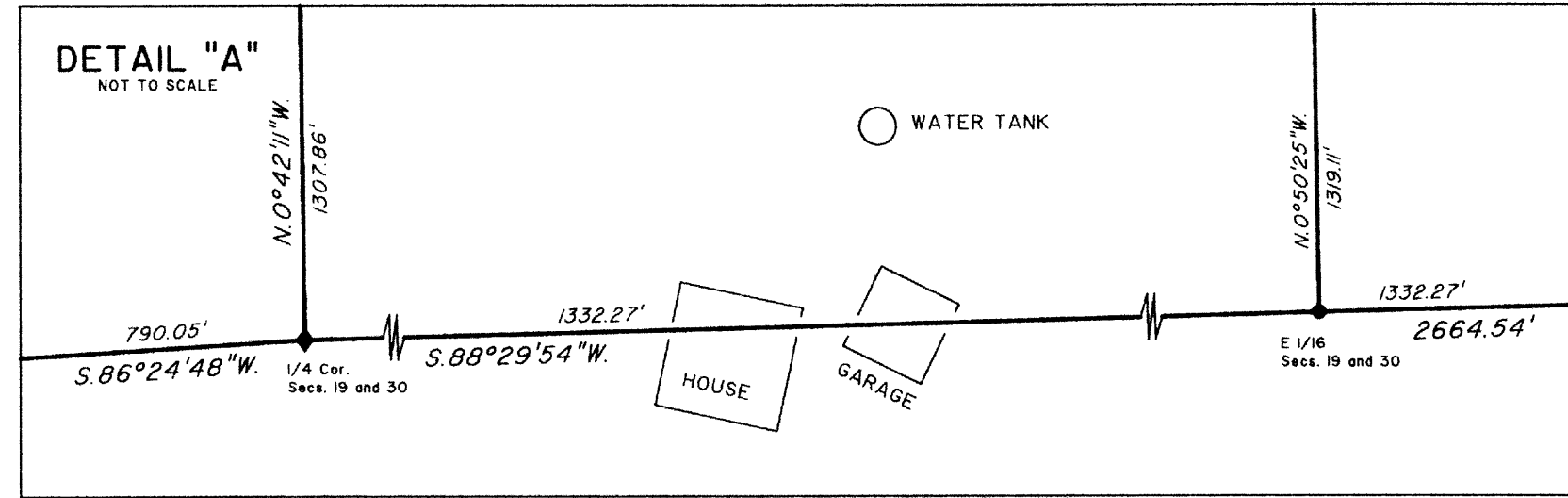
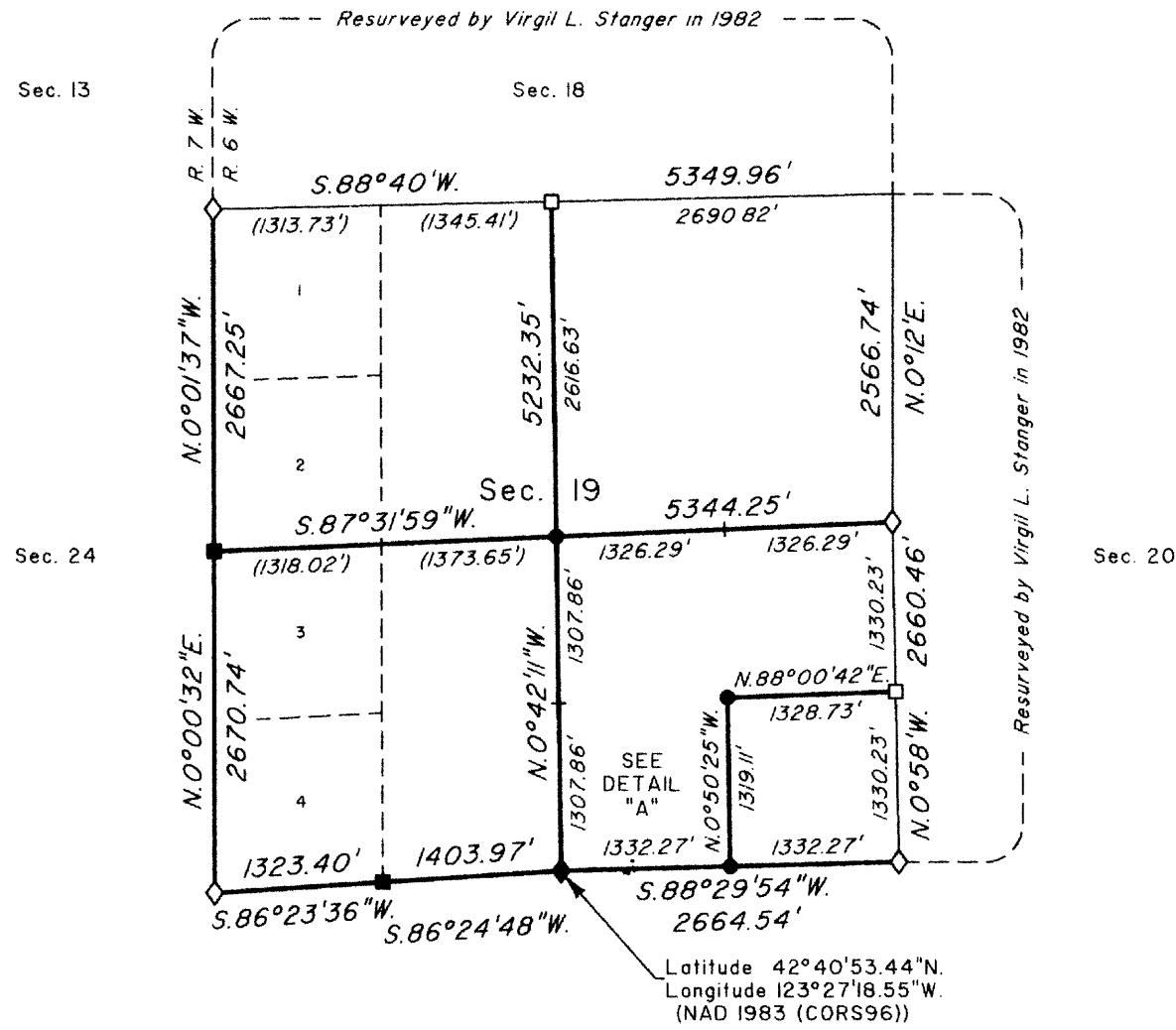


# TOWNSHIP 33 SOUTH, RANGE 6 WEST, OF THE WILLAMETTE MERIDIAN, OREGON

## DEPENDENT RESURVEY AND SUBDIVISION OF SECTIONS 19 AND 31

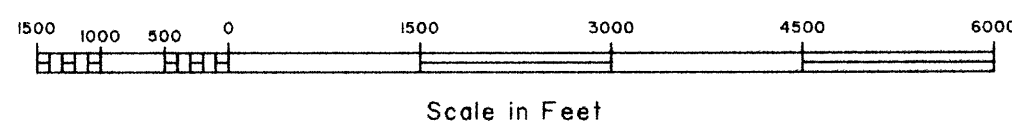
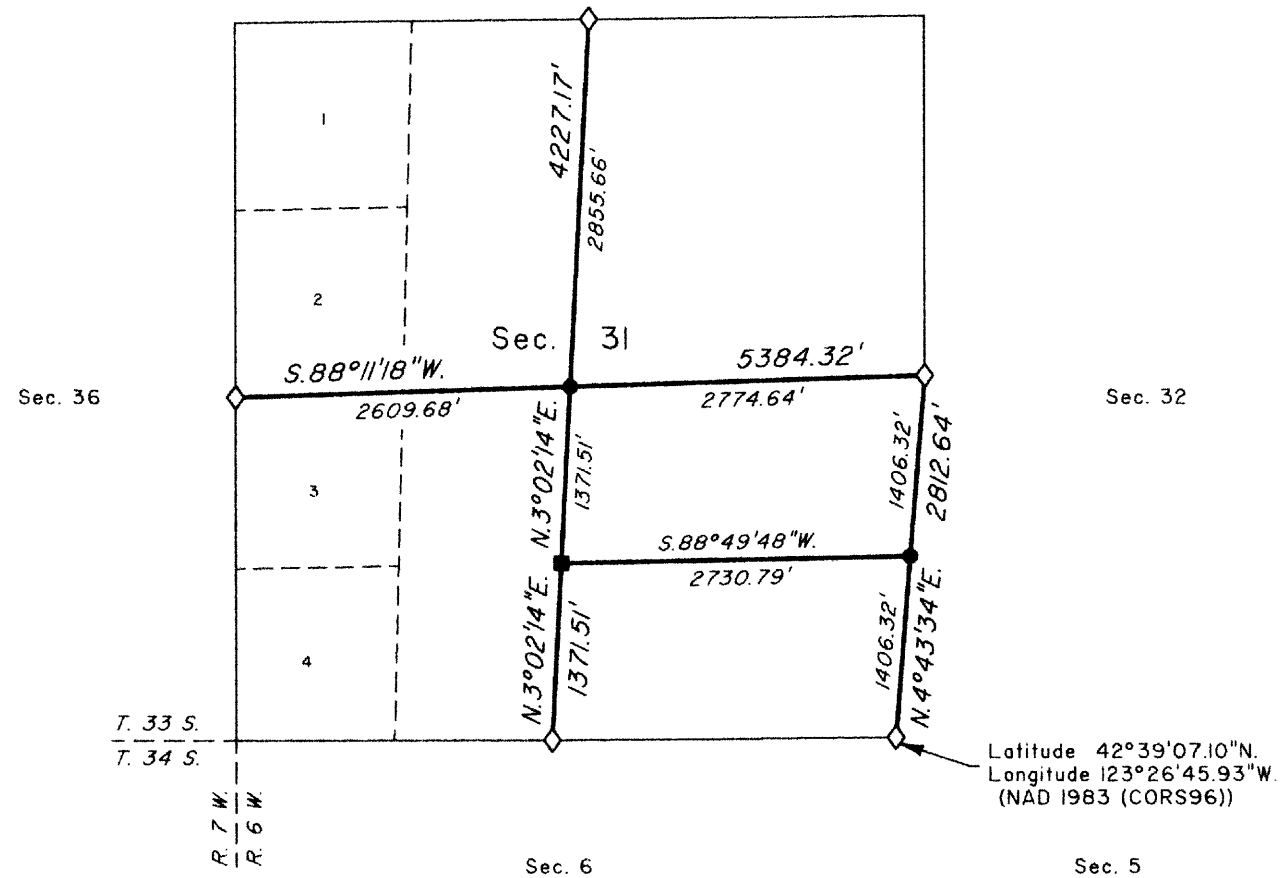
FILED  
 Date: 9/15/2011 By: JC  
 This survey consists of:  
 Map: NOT IN  
 Narrative: DOUGLAS  
 Corner Rpt: COUNTY  
 DOUGLAS COUNTY  
 SURVEYOR



LEGAL SUBDIVISION	OFFICIAL ACRES
SECTION 19	
NE 1/4	158.88
E 1/2 NW 1/4	82.04
LOT 1	40.05
LOT 2	40.10
E 1/2 SW 1/4	83.75
LOT 3	40.20
LOT 4	40.26
NE 1/4 SE 1/4	40.35
W 1/2 SE 1/4	80.14
SECTION 31	
N 1/2 SE 1/4	87.37

**LEGEND**

- ◊ Original corner previously remonumented
- ◆ Original corner remonumented this survey
- Corner previously established or reestablished
- Corner previously established or reestablished; remonumented this survey
- Corner established or reestablished this survey
- + Corner point calculated, no monument set
- ( ) Calculated distance



A history of surveys is contained in the field notes.

This plat represents a dependent resurvey of a portion of the west boundary and subdivisional lines, T. 33 S., R. 6 W., Willamette Meridian, Oregon, designed to restore the corners in their true original locations according to the best available evidence, and the subdivision of sections 19 and 31.

Measured distances and directions have been adjusted by computer software that incorporates a least squares adjustment routine. The adjusted bearings and distances are reported to the nearest second and 0.01 foot.

Actual quantity acreages have been returned for Federal interest lands where indicated. Changes in the official acreage of land described by aliquot part or lot number do not alter its description. Further subdivision of aliquot parts shall be in accordance with the Manual. Further subdivision of official lots may only be by supplemental plat or official survey. Official acreage and lot designations of Federal interest lands not affected by this survey are as shown on the plat approved approved June 16, 1882.

The survey was executed by Francis J. Simon, Cadastral Surveyor, beginning September 25, 2008, and completed July 13, 2009, pursuant to Special Instructions dated August 27, 2008, under Group Number 2223, Oregon.

UNITED STATES DEPARTMENT OF THE INTERIOR  
BUREAU OF LAND MANAGEMENT

Portland, Oregon

This plat is strictly conformable to the approved field notes, and the survey, having been correctly executed in accordance with the requirements of law and the regulations of this Bureau, is hereby accepted.

For the Director

*Mary J. M. Hartzel*

Chief Cadastral Surveyor of Oregon

June 23, 2011  
Date

OFFICIALLY FILED: 8/12/2011