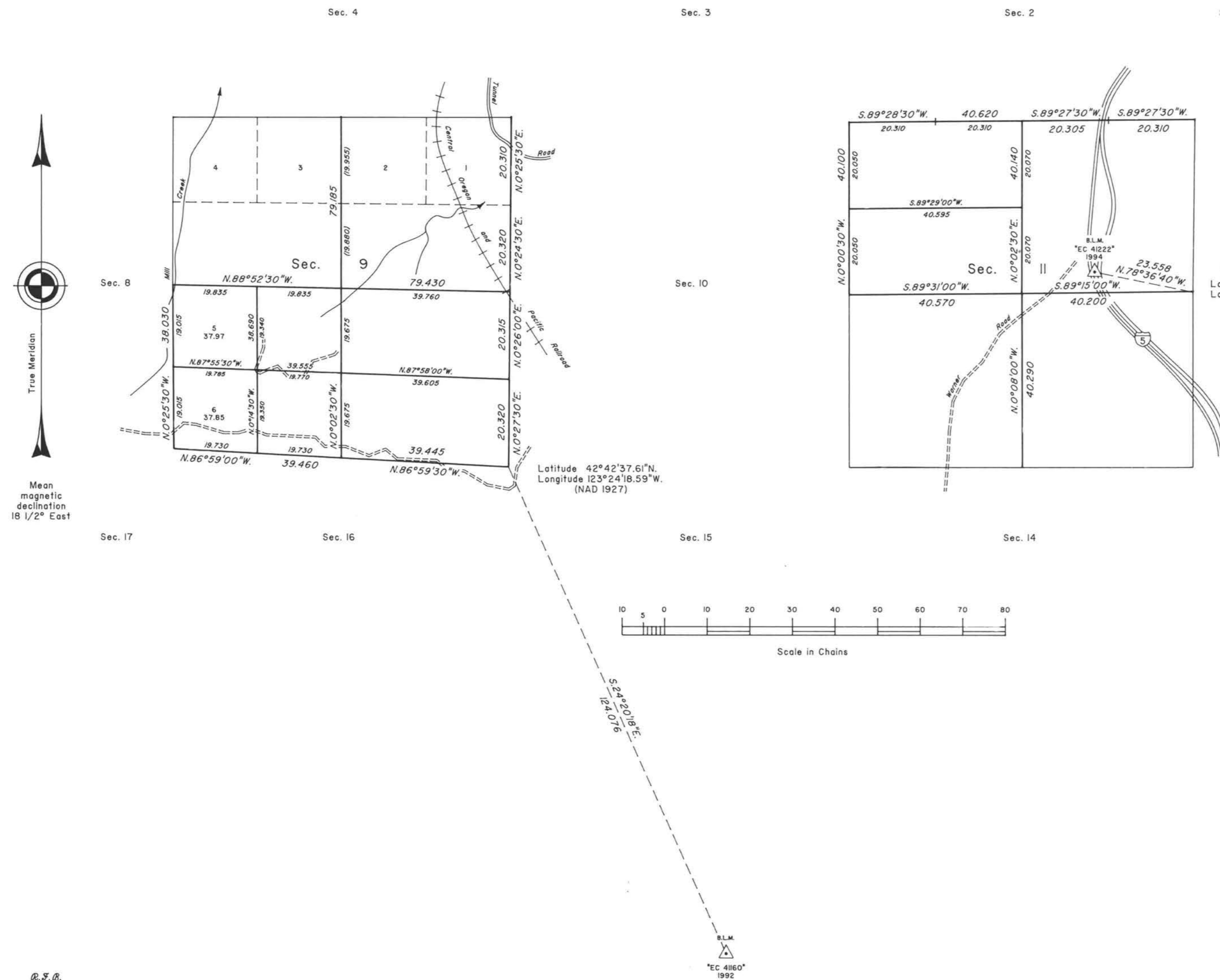


TOWNSHIP 33 SOUTH, RANGE 6 WEST, OF THE WILLAMETTE MERIDIAN, OREGON

DEPENDENT RESURVEY AND SUBDIVISION OF SECTIONS 9 AND II



A history of surveys is contained in the field notes.

This plat represents a dependent resurvey of a portion of the subdivisional lines, T. 33 S., R. 6 W., Willamette Meridian, Oregon, designed to restore the corners in their true original locations according to the best available evidence, and the subdivision of sections 9 and II.

Except as shown hereon, the lottings and areas are as shown on the plat approved March 31, 1856, and June 16, 1882.

The survey was executed by Francis J. Simon, Cadastral Surveyor, beginning June 6, 1994, and completed September 28, 1994, pursuant to Special Instructions dated May 19, 1994, under Group Number 1736, Oregon.

Timber in this area consists of fir, pine, oak, madrone, chinquapin, cedar, maple, alder and yew.

Sec. 12
Latitude 42°43'04.50"N.
Longitude 123°21'56.25"W.
(NAD 1927)

The ties to the geodetic control stations are reported as mean bearing and sea level distance.

UNITED STATES DEPARTMENT OF THE INTERIOR
BUREAU OF LAND MANAGEMENT

Portland, Oregon May 16, 1997

This plat is strictly conformable to the approved field notes, and the survey, having been correctly executed in accordance with the requirements of law and the regulations of this Bureau, is hereby accepted.

For the Director

Chief Cadastral Surveyor of Oregon