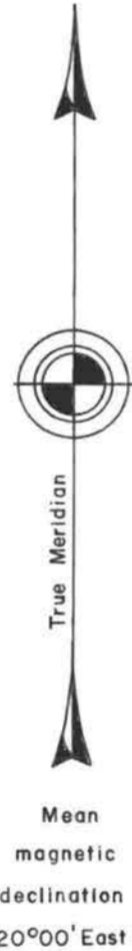
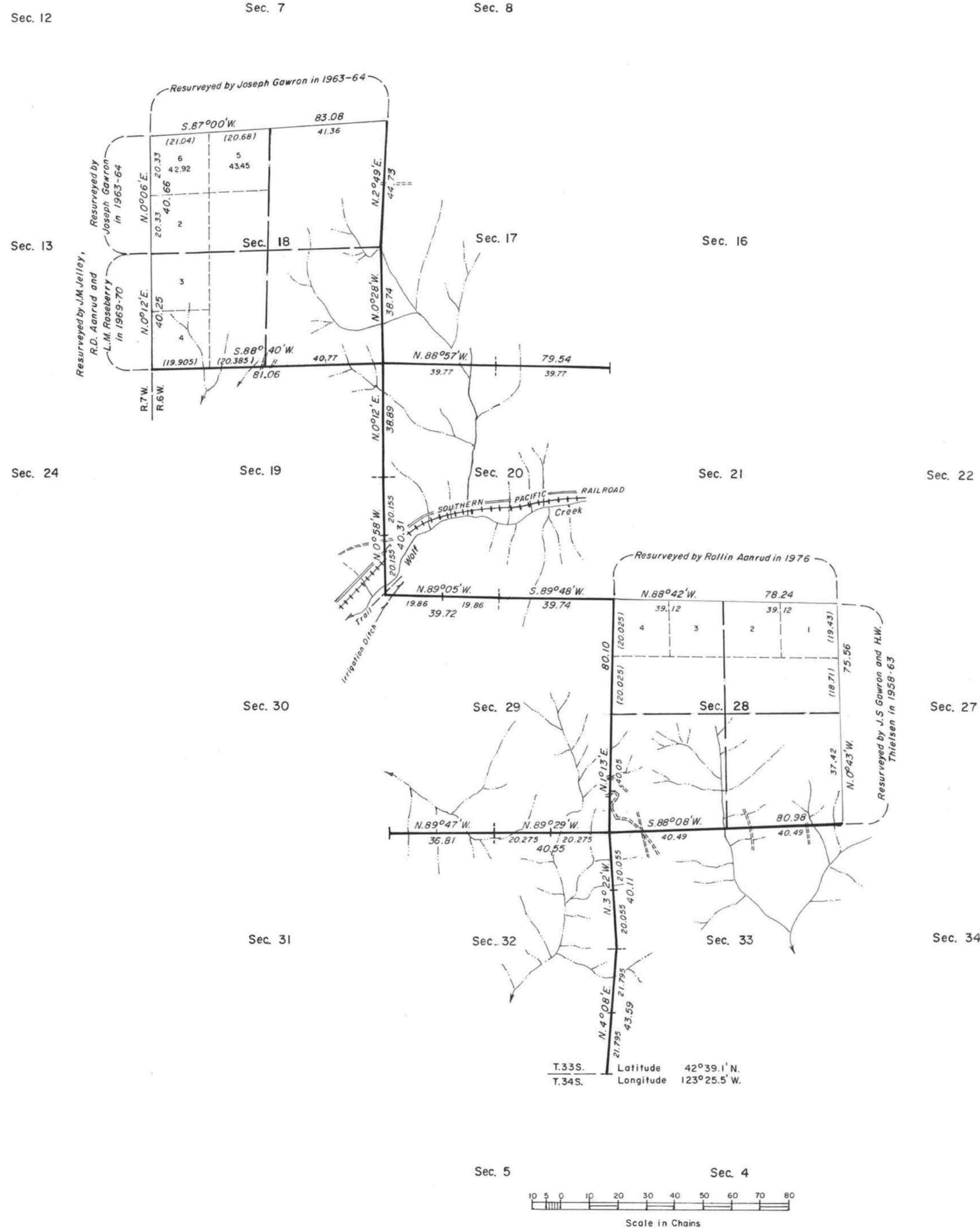


TOWNSHIP 33 SOUTH, RANGE 6 WEST, OF THE WILLAMETTE MERIDIAN, OREGON.

DEPENDENT RESURVEY



A history of surveys is contained in the field notes.

This plat represents a dependent resurvey of a portion of the subdivisional lines, T. 33 S., R. 6 W., Willamette Meridian, Oregon, designed to restore the corners in their true original locations according to the best available evidence.

The lottings and areas are as shown on the plat approved June 16, 1882.

The survey was executed by Virgil L. Stanger, Cadastral Surveyor, beginning June 24, 1982, and completed October 10, 1982, pursuant to Special Instructions dated March 19, 1981, and Supplemental Special Instructions dated January 26, 1982, for Group No. 1052, Oregon.

Timber in this area consists of fir, pine, oak, madrone, chinquapin, maple, and alder.

UNITED STATES DEPARTMENT OF THE INTERIOR
BUREAU OF LAND MANAGEMENT
Portland, Oregon July 20, 1984

This plat is strictly conformable to the approved field notes, and the survey, having been correctly executed in accordance with the requirements of law and the regulations of this Bureau, is hereby accepted.

For the Director

William W. Glenn

Chief Cadastral Surveyor of Oregon