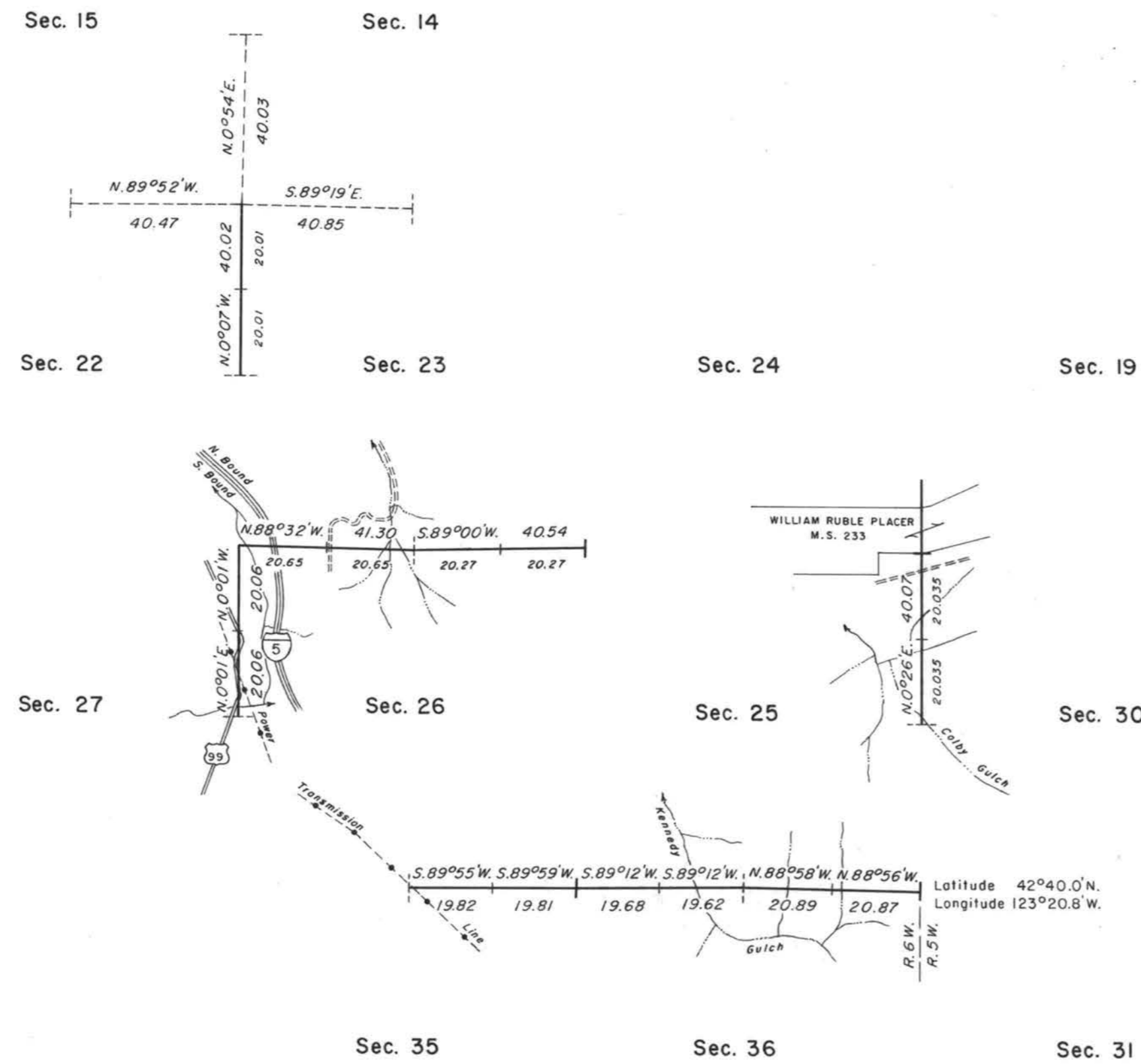
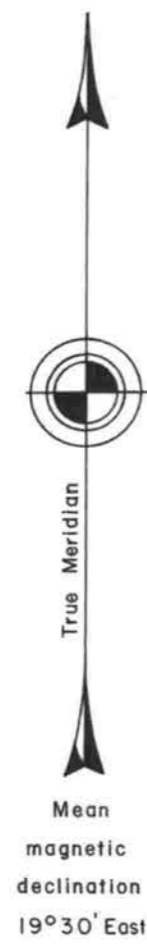


TOWNSHIP 33 SOUTH, RANGE 6 WEST, OF THE WILLAMETTE MERIDIAN, OREGON.

DEPENDENT RESURVEY



A history of surveys is contained in the field notes.

This plat represents a dependent resurvey of a portion of the east boundary and subdivisional lines, T. 33 S., R. 6 W., designed to restore the corners in their true original location according to the best available evidence.

The lottings and areas are as shown on the plat approved March 31, 1856.

The resurvey was executed by Lynn M. Roseberry, Cadastral Surveyor, from June 26, 1978, to August 28, 1978, under Special Instructions dated April 18, 1978, which provide for the surveys included under Group Number 946.

Timber in this area consists of fir, oak, madrone, pine, cedar, yew, chinquapin, maple and alder.

UNITED STATES DEPARTMENT OF THE INTERIOR
BUREAU OF LAND MANAGEMENT
Portland, Oregon May 27, 1982

This plat is strictly conformable to the approved field notes, and the survey, having been correctly executed in accordance with the requirements of law and the regulations of this Bureau, is hereby accepted.

For the Director

William W. Glenn

Chief Cadastral Surveyor of Oregon

