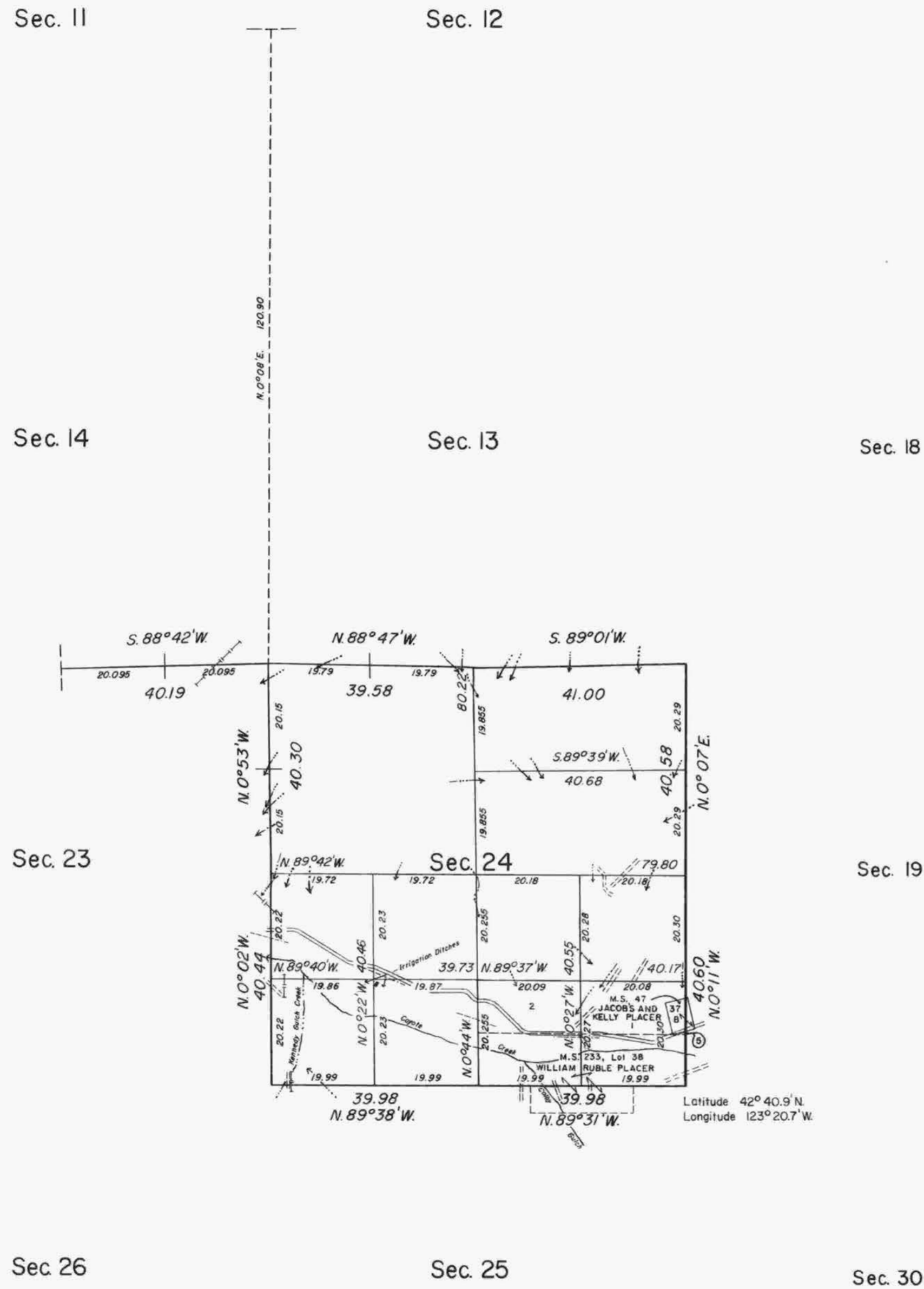


TOWNSHIP 33 SOUTH, RANGE 6 WEST, OF THE WILLAMETTE MERIDIAN, OREGON.

DEPENDENT RESURVEY AND SUBDIVISION OF SECTION 24



MEAN
MAGNETIC
DECLINATION
19° 30' E.

The east boundary of the township was surveyed by Butler Ives and George W. Hyde, in 1854, as an offset of the Willamette Meridian.

The Seventh Standard Parallel South, north boundary, south boundary, west boundary and a portion of the subdivisional lines were surveyed by Wells Lake and George W. Hyde in 1855.

The survey of the subdivisional lines was completed by William H. Byars in 1882.

Certain original corners, including the 1/4 section corner of sections 23 and 24, the 1/4 section corner of sections 24 and 25, and the corner of sections 19, 24, 25, and 30, on the east boundary of the township, were remonumented without survey by Joseph S. Gawron in 1963.

This plat represents a dependent resurvey of a portion of the east boundary and subdivisional lines, T. 33 S., R. 6 W., Willamette Meridian, Oregon designed to restore the corners in their true original location according to the best available evidence; and subdivision of section 24.

Lottings and areas are as shown on the plat approved both March 31, 1856 and June 16, 1882 and accepted July 7, 1882 by the Commissioner, G.L.O.

The resurvey and subdivision of section was executed by Lynn M. Roseberry, from July 20, 1970 to August 28, 1970 under Special Instructions dated July 17, 1970 for Group No. 721.

UNITED STATES DEPARTMENT OF THE INTERIOR
BUREAU OF LAND MANAGEMENT
Washington, D.C. March 27, 1975

This plat is strictly conformable to the approved field notes, and the survey, having been correctly executed in accordance with the requirements of law and the regulations of this Bureau, is hereby accepted.

For the Director

Bernard W. Foster
Chief, Division of Cadastral Survey

Timber in this area consists of fir, pine, oak, cedar, madrone, chinquapin, yew, maple, and alder.