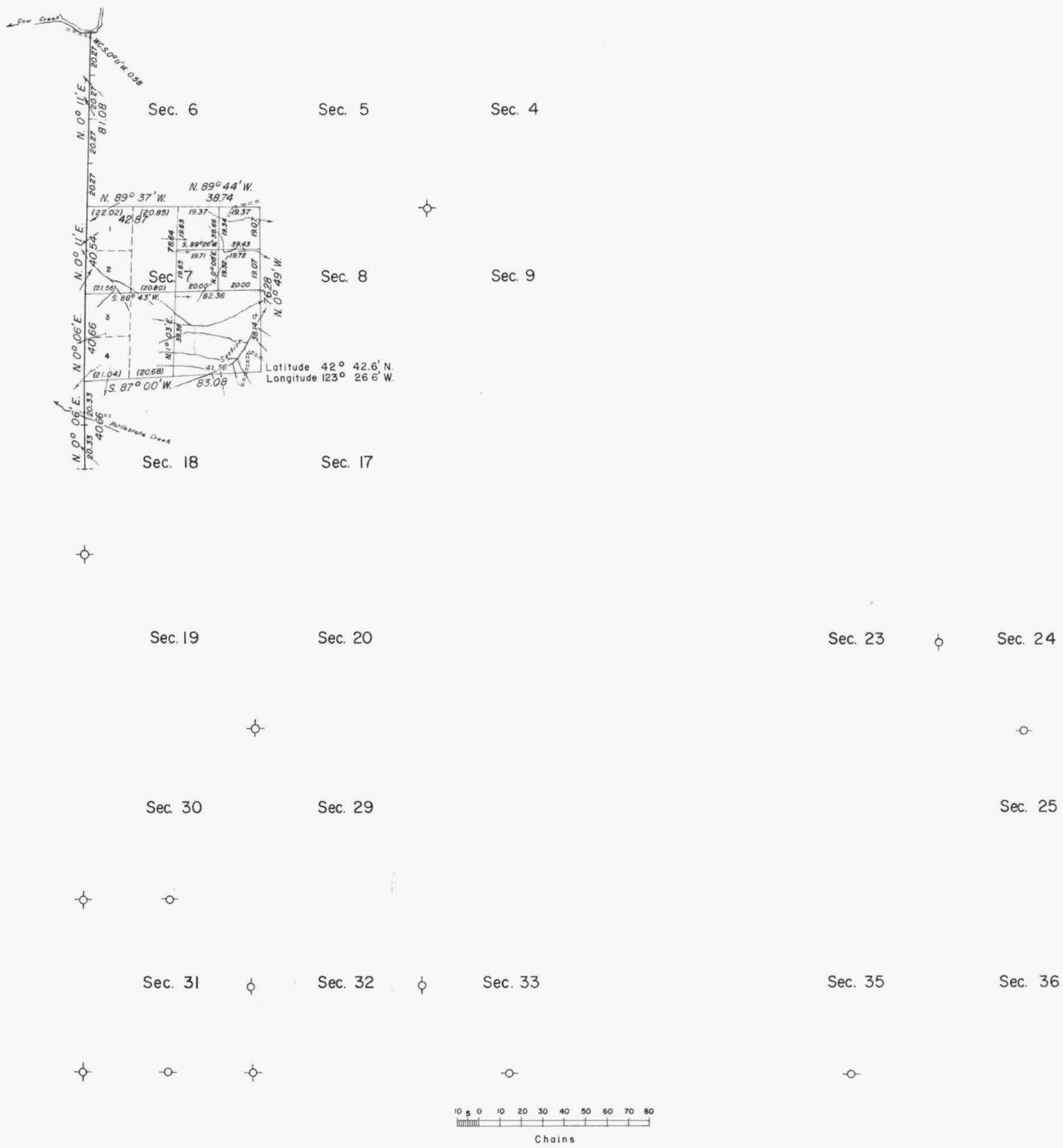


# TOWNSHIP 33 SOUTH, RANGE 6 WEST, OF THE WILLAMETTE MERIDIAN, OREGON.

## DEPENDENT RESURVEY, SUBDIVISION, AND REMONUMENTATION



This plat represents a retracement and reestablishment of a portion of the west boundary, a portion of the subdivisional lines, and remonumentation of certain original corners in T. 33 S., R. 6 W., Willamette Meridian, Oregon, designed to restore the corners in their true original locations according to the best available evidence; and, the subdivision of section 7. Lottings and areas are as shown on the plat approved June 16, 1882.

The west boundary was surveyed by Wells Lake and George W. Hyde in 1855. The subdivisional lines of T. 33 S., R. 6 W., Willamette Meridian, Oregon, were surveyed by William H. Byars in 1882.

These surveys executed by Joseph S. Gawron, September 19, 1963, to July 14, 1964, under Special Instructions dated May 3, 1957, and August 8, 1963, for Group Nos. 526 and 350, Oregon.

○ Corners remonumented under Group No. 350, Oregon.

Mean  
Magnetic  
Declination  
20° East

10 5 0 10 20 30 40 50 60 70 80  
Chains

Area resurveyed: 645.84 Acres

Timber in this area consists of Douglas fir, incense cedar, and ponderosa pine.

UNITED STATES DEPARTMENT OF THE INTERIOR  
BUREAU OF LAND MANAGEMENT  
Washington, D. C. November 1, 1965

This plat is strictly conformable to the approved field notes, and the survey, having been correctly executed in accordance with the requirements of law and the regulations of this Bureau, is hereby accepted.

For the Director

*Ed Remington*  
Chief, Division of Engineering