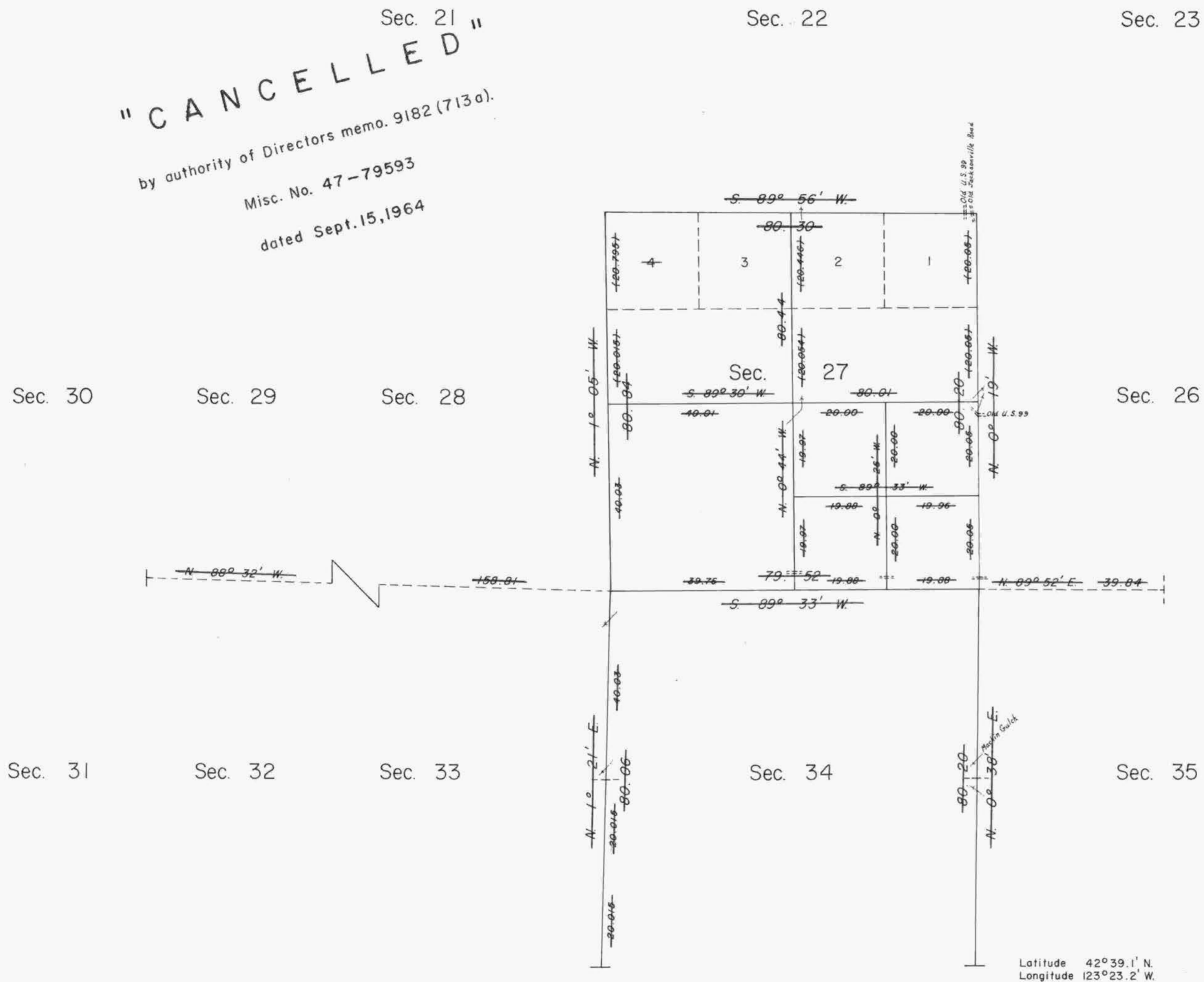


# TOWNSHIP 33 SOUTH, RANGE 6 WEST, OF THE WILLAMETTE MERIDIAN, OREGON.

DEPENDENT RESURVEY AND SUBDIVISION

Sec. 21  
"CANCELLED"  
by authority of Directors memo. 9182 (7130).  
Misc. No. 47-79593  
dated Sept. 15, 1964



True Meridian  
Mean magnetic declination  
19° 30' East

Timber in this area consists of fir, pine, and madrone.

10 5 0 10 20 30 40  
Chains  
Area resurveyed - 643.12 Acres

Latitude 42° 39.1' N.  
Longitude 123° 23.2' W.

This plat represents a retracement and reestablishment of a portion of the subdivisional lines designed to restore the corners in their true original location according to the best available evidence; and, the lottings and areas are as shown on the plat approved June 16, 1882.

A portion of the subdivisional lines surveyed by Lake and Hyde in 1855 and by William H. Byars in 1882.

Dependent resurvey of a portion of the subdivisional lines and subdivision of Section 17, T. 33 S., R. 6 W., Willamette Meridian, Oregon, executed by Hans W. Thielsen, May 21 to June 14, 1958, under Special Instructions dated May 15, 1958, which provide for the surveys included under Group No. 399, Oregon.

UNITED STATES DEPARTMENT OF THE INTERIOR  
BUREAU OF LAND MANAGEMENT  
Washington, D.C. November 18, 1960

This plat is strictly conformable to the approved field notes, and the survey, having been correctly executed in accordance with the requirements of law and the regulations of this Bureau, is hereby accepted.

For the Director  
*Clark I. Lamm*  
Acting Cadastral Engineering Staff Officer

X 27

J.R.H.