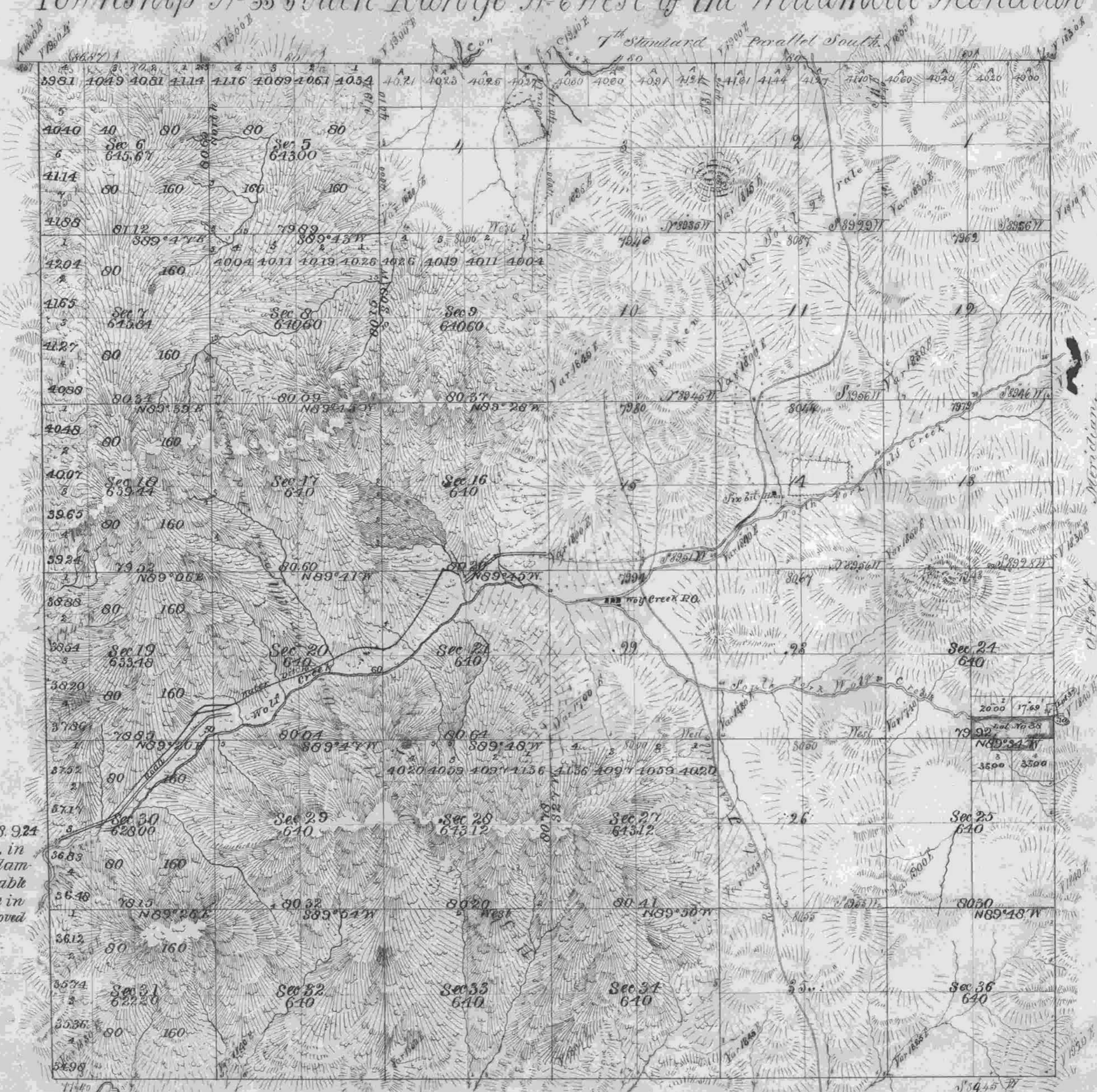


Township N<sup>o</sup> 33 South Range N<sup>o</sup> 6 West of the Willamette Meridian

854



The above map of the Subdivisions of 5. 6. 7. 8. 9. 24. 25. 26. 17. 18. 19. 20. 21. 27. 28. 29. 30. 31. 32. 33. & 34. in Township 33 South Range 6 West of the Willamette Meridian Oregon is strictly conformable to the Field Notes of the survey thereof on file in this office, which have been examined and approved U.S. Surveyor General's Office, Portland Oregon, June 16, 1882.

James C. Tolman  
Surveyor General of Oregon

Cred. 431 ACCEPTED BY THE HON. COMMISSIONER G. L. O. July 7 1882

Total number of Acres of Old Survey 8,970.60 of New Survey 14,065.07. Total number of Acres 23,035.67

Survey Designated	By Whom Surveyed	Contract		Amount of Survey		
		No.	Date	Acres	Chains	Links
7th Standard Parallel	Sale & Hyde	54	January 13, 1855	6	06	87
Township Lines	Sale & Hyde	54	February 10, 1855	11	74	40
Subdivisions	Sale & Hyde	54	February 24, 1855	30	02	46
Subdivisions	William H. Byars	431	March 29, 1882	30	02	54
Connections	do do do	do	do do do	2	65	

The above Map of Township N<sup>o</sup> 33 South of Range N<sup>o</sup> 6 West of the Willamette Meridian, Territory of Oregon, is strictly conformable to the field notes of the survey thereof on file in this Office which have been examined and approved Surveyor General's Office, Salem O., March 31<sup>st</sup> 1886.

Chas. Gardner  
Surveyor General of Oregon