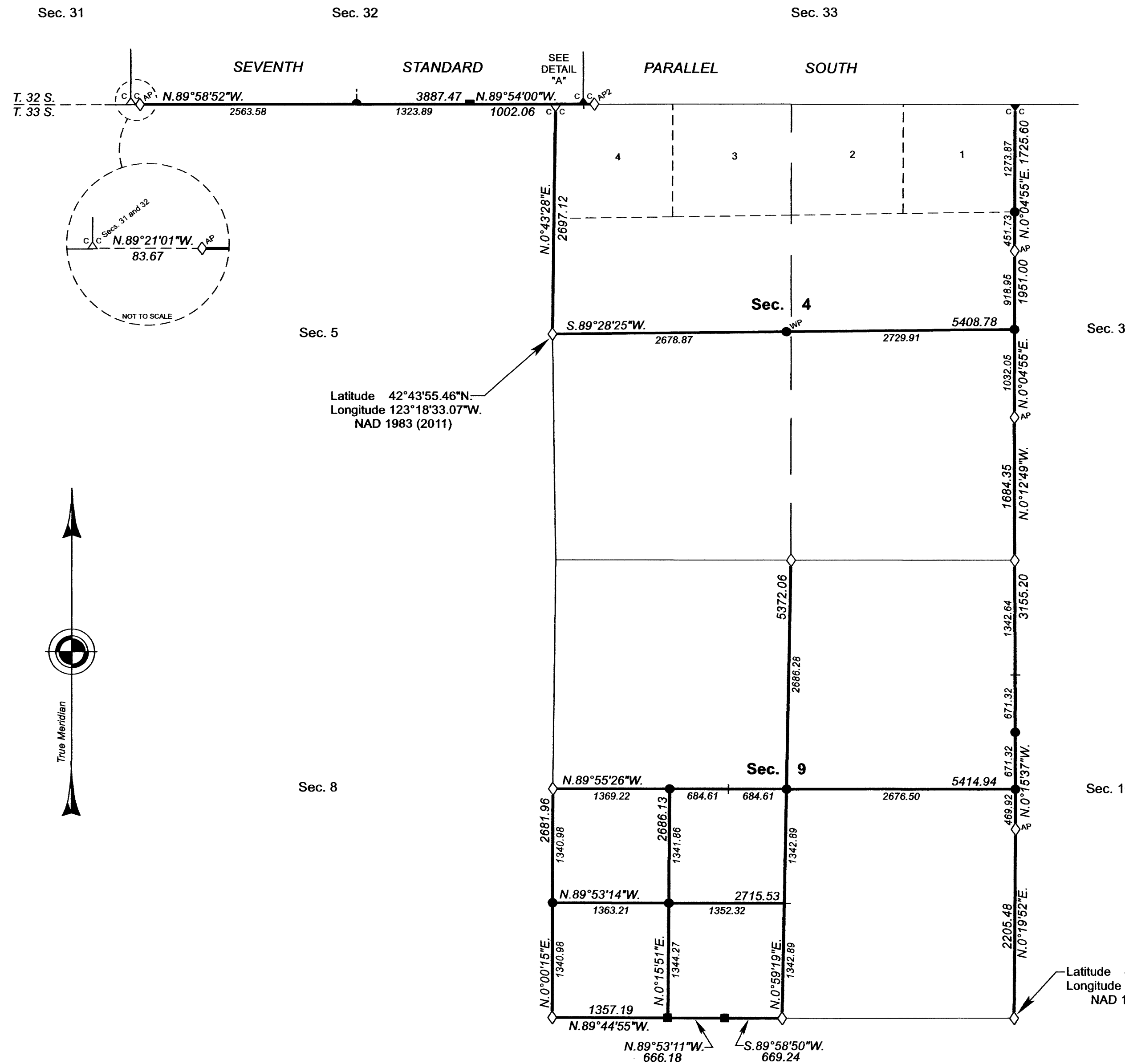


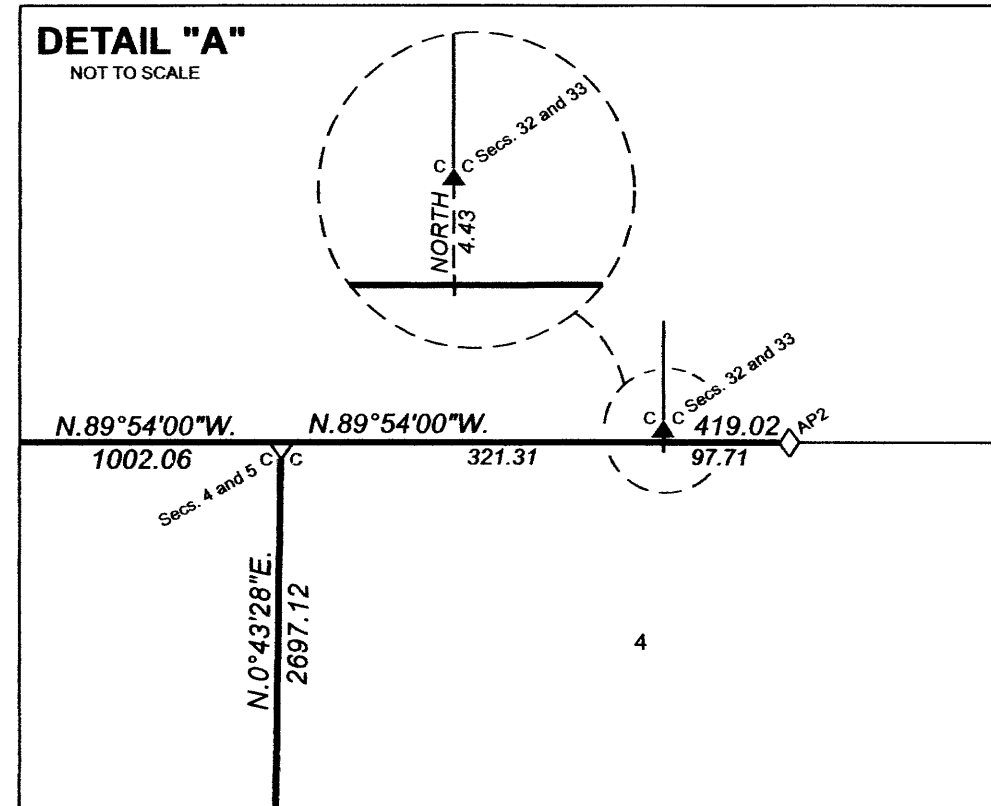
# TOWNSHIP 33 SOUTH, RANGE 5 WEST, OF THE WILLAMETTE MERIDIAN, OREGON

## DEPENDENT RESURVEY AND SUBDIVISION OF SECTIONS



Latitude 42°43'55.46"N.  
Longitude 123°18'33.07"W.  
NAD 1983 (2011)

Latitude 42°42'36.18"N.  
Longitude 123°17'20.53"W.  
NAD 1983 (2011)



FILED  
Date: 9/10/2024 By: JC  
This survey consists of:  
Map: PLAT 2023 (PGS 1-3 OF 8)  
Narrative: VOL. 59  
Corner Rpt: PAGES 24101-24185  
MOST OF RESURVEY IN JOSEPHINE CO  
DOUGLAS COUNTY  
SURVEYOR

**LEGEND**

- ◊ Original corner previously remonumented
- ◆ Original corner remonumented this survey
- Corner previously established or reestablished; remonumented this survey
- Corner established or reestablished this survey
- + Corner point calculated, no monument set

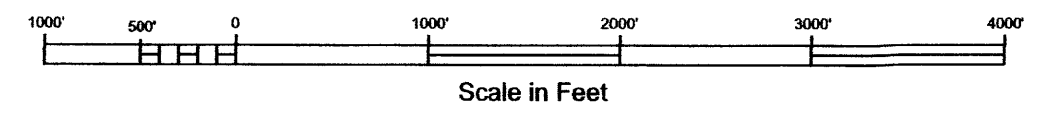
UNITED STATES DEPARTMENT OF THE INTERIOR  
BUREAU OF LAND MANAGEMENT  
Portland, Oregon

This plat is strictly conformable to the approved field notes, and the survey, having been correctly executed in accordance with the requirements of law and the regulations of this Bureau, is hereby accepted.

For the Director  
*Robb W. Feul*  
Chief Cadastral Surveyor of Oregon

December 15, 2023

Date



OFFICIALLY FILED: 2/7/2024