

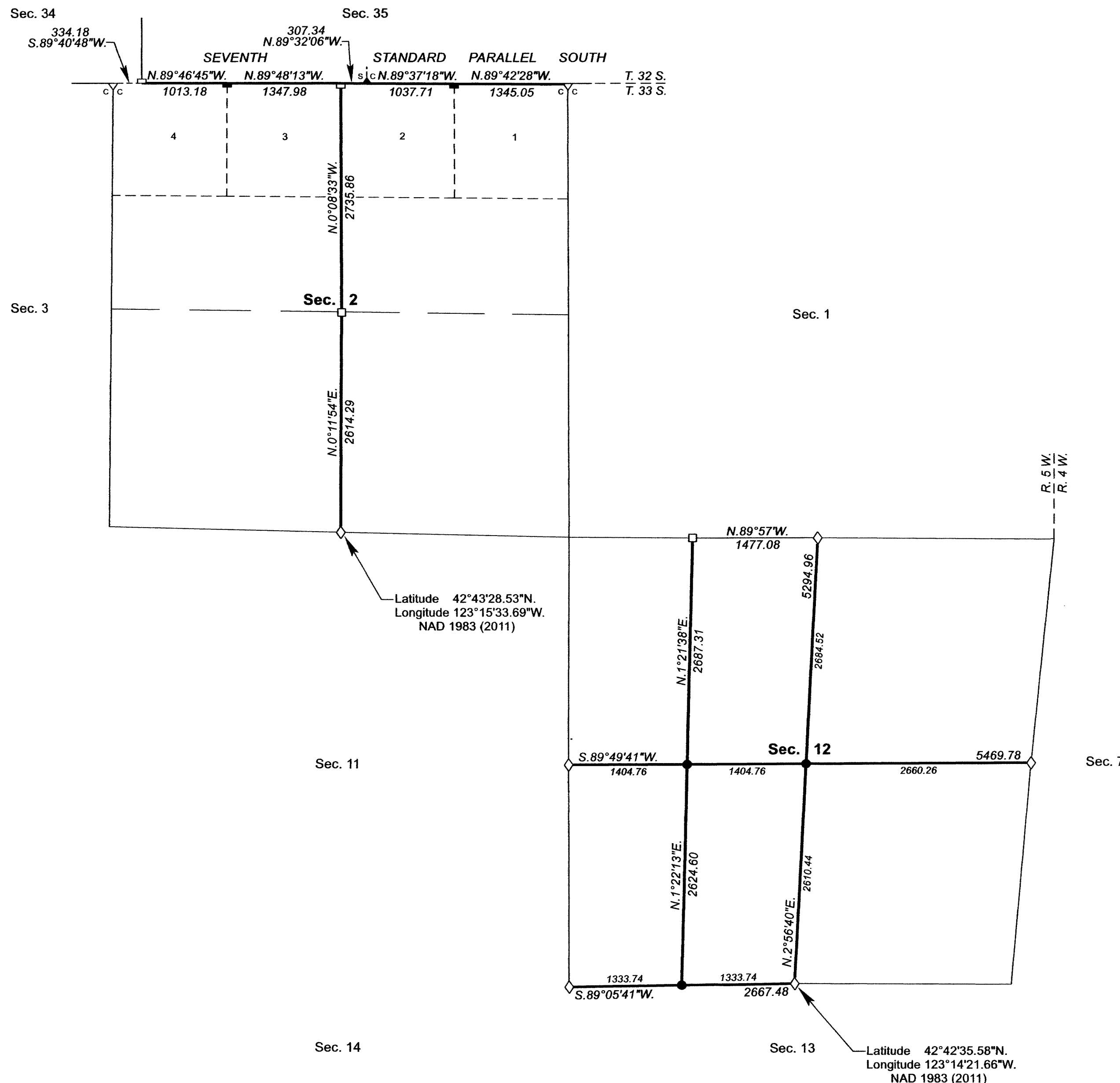
TOWNSHIP 33 SOUTH, RANGE 5 WEST, OF THE WILLAMETTE MERIDIAN, OREGON

DEPENDENT RESURVEY AND SUBDIVISION OF SECTIONS

SHEET 2 OF 8

FILED
 Date: 9/10/2024 By: JC
 This survey consists of:
 Map: PLAT 2023 (PGS 1-3 OF 8)
 Narrative: VOL. 59
 Corner Rpt: PAGES 24101-24185
 MOST OF RESURVEY IN JOSEPHINE CO
 DOUGLAS COUNTY
 SURVEYOR

OFFICIALLY FILED: 2/7/2024



NOTE:
 The lightweight exterior line with bearing and distance shown in section 12 was surveyed by Lynn M. Roseberry in 1970, and was utilized to calculate the areas of Federal interest land.

LEGEND

- ◊ Original corner previously remonumented
- ◆ Original corner remonumented this survey
- Corner previously established or reestablished
- Corner previously established or reestablished; remonumented this survey
- Corner established or reestablished this survey

UNITED STATES DEPARTMENT OF THE INTERIOR
 BUREAU OF LAND MANAGEMENT
 Portland, Oregon

This plat is strictly conformable to the approved field notes, and the survey, having been correctly executed in accordance with the requirements of law and the regulations of this Bureau, is hereby accepted.

For the Director
Ralph W. Feun
 Chief Cadastral Surveyor of Oregon

December 15, 2023
 Date