

TOWNSHIP 33 SOUTH, RANGE 5 WEST, OF THE WILLAMETTE MERIDIAN, OREGON

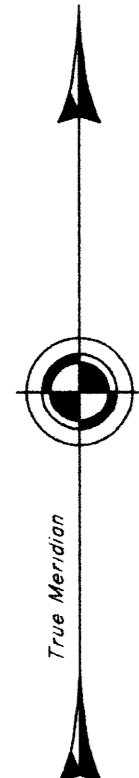
SHEET 2 OF 2

DEPENDENT RESURVEY AND SUBDIVISION OF SECTIONS

FILED
 Date: 4/25/2012 By: JC
 This survey consists of:
 Map: PLAT 2012-1 A + B, T33-5
 Narrative: VOL. 58
 Corner Rpt: PAGES 22859-22886

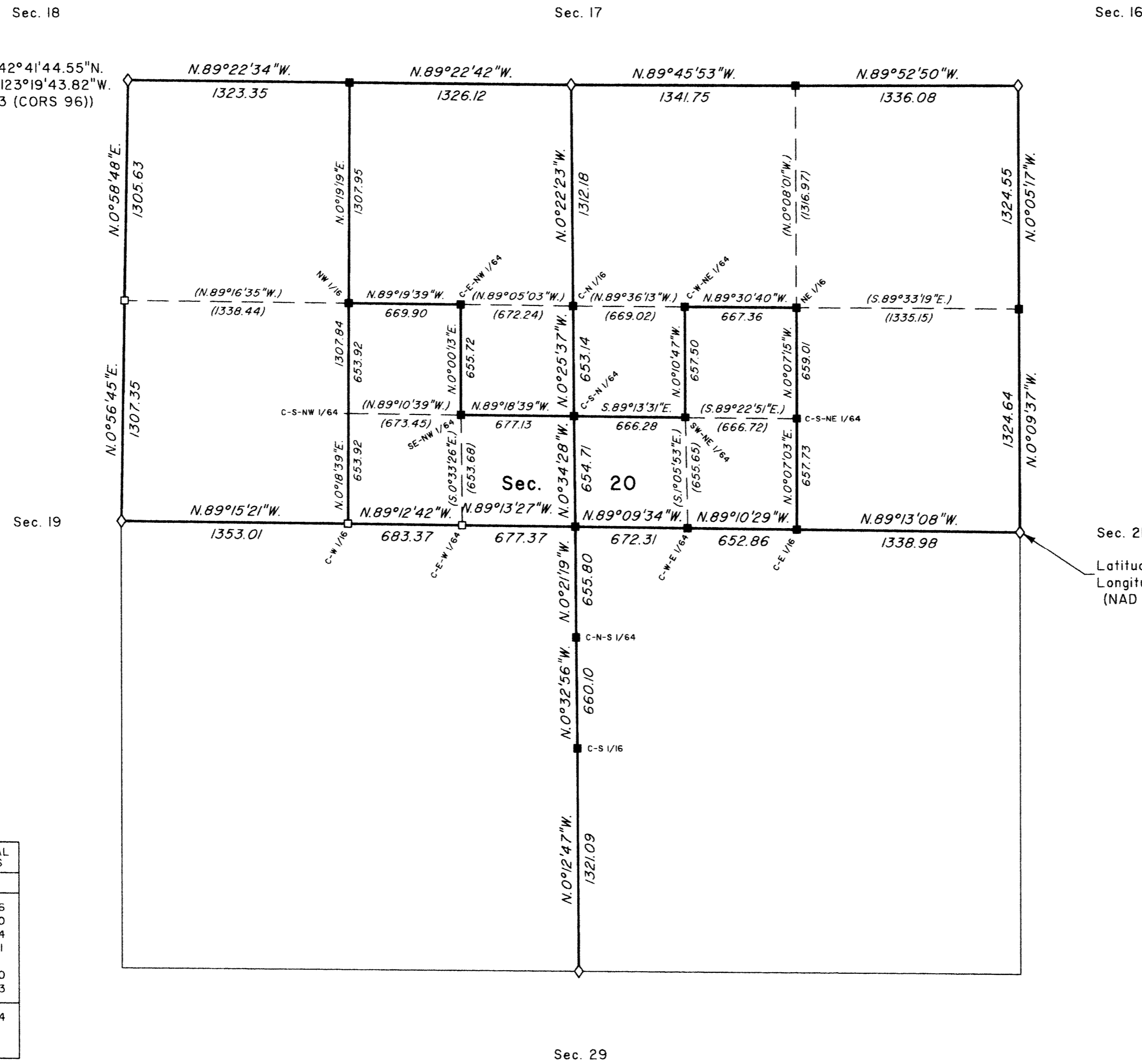
DOUGLAS COUNTY
 SURVEYOR

OFFICIALLY FILED: 3/16/2012



Latitude 42°41'44.55"N.
 Longitude 123°19'43.82"W.
 (NAD 1983 (CORS 96))

Latitude 42°41'18.02"N.
 Longitude 123°18'32.41"W.
 (NAD 1983 (CORS 96))



LEGAL SUBDIVISION	OFFICIAL ACRES
SECTION 20	
NE 1/4 NE 1/4	40.06
NW 1/4 NE 1/4	40.40
NW 1/4 SW 1/4 NE 1/4	10.04
SE 1/4 NE 1/4	40.51
NE 1/4 NW 1/4	40.10
NE 1/4 SE 1/4 NW 1/4	10.13
TOTAL AREA FEDERAL INTEREST LAND RESURVEYED	184.24

LEGEND	
◇	Original corner previously remonumented
□	Corner previously established
■	Corner previously established; remonumented this survey
+	Corner point calculated, no monument set
()	Calculated bearing and distance

UNITED STATES DEPARTMENT OF THE INTERIOR
 BUREAU OF LAND MANAGEMENT

Portland, Oregon

This plat is strictly conformable to the approved field notes, and the survey, having been correctly executed in accordance with the requirements of law and the regulations of this Bureau, is hereby accepted.

For the Director

Chief Cadastral Surveyor of Oregon

