

FILED

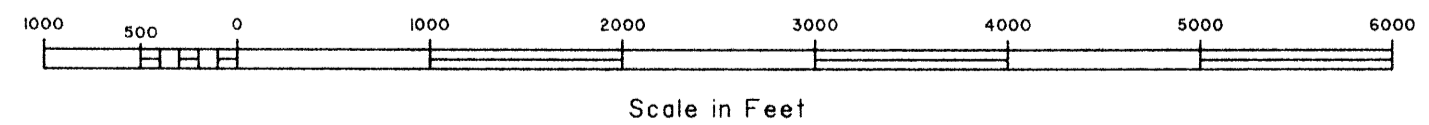
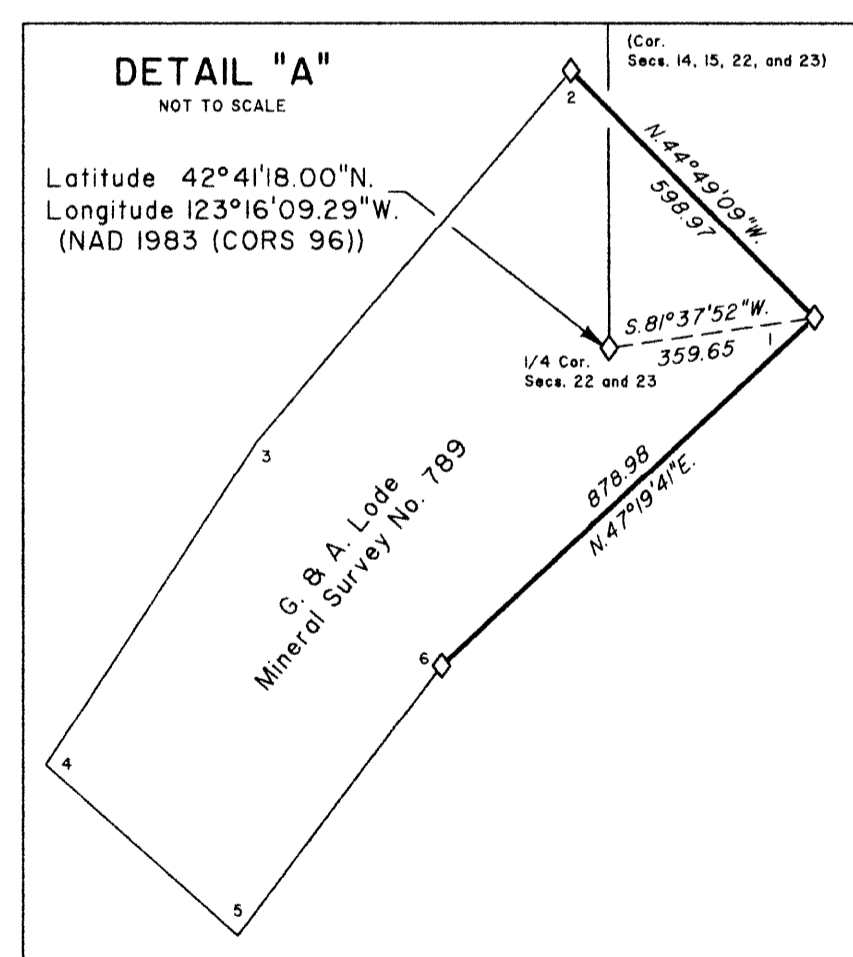
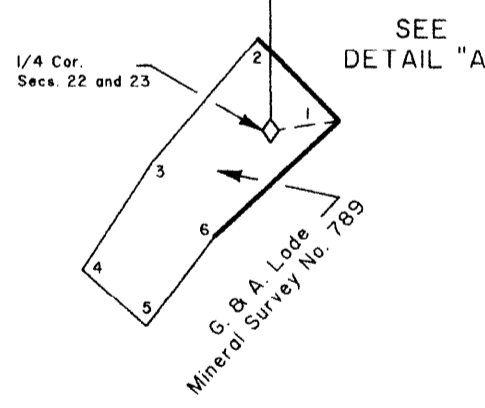
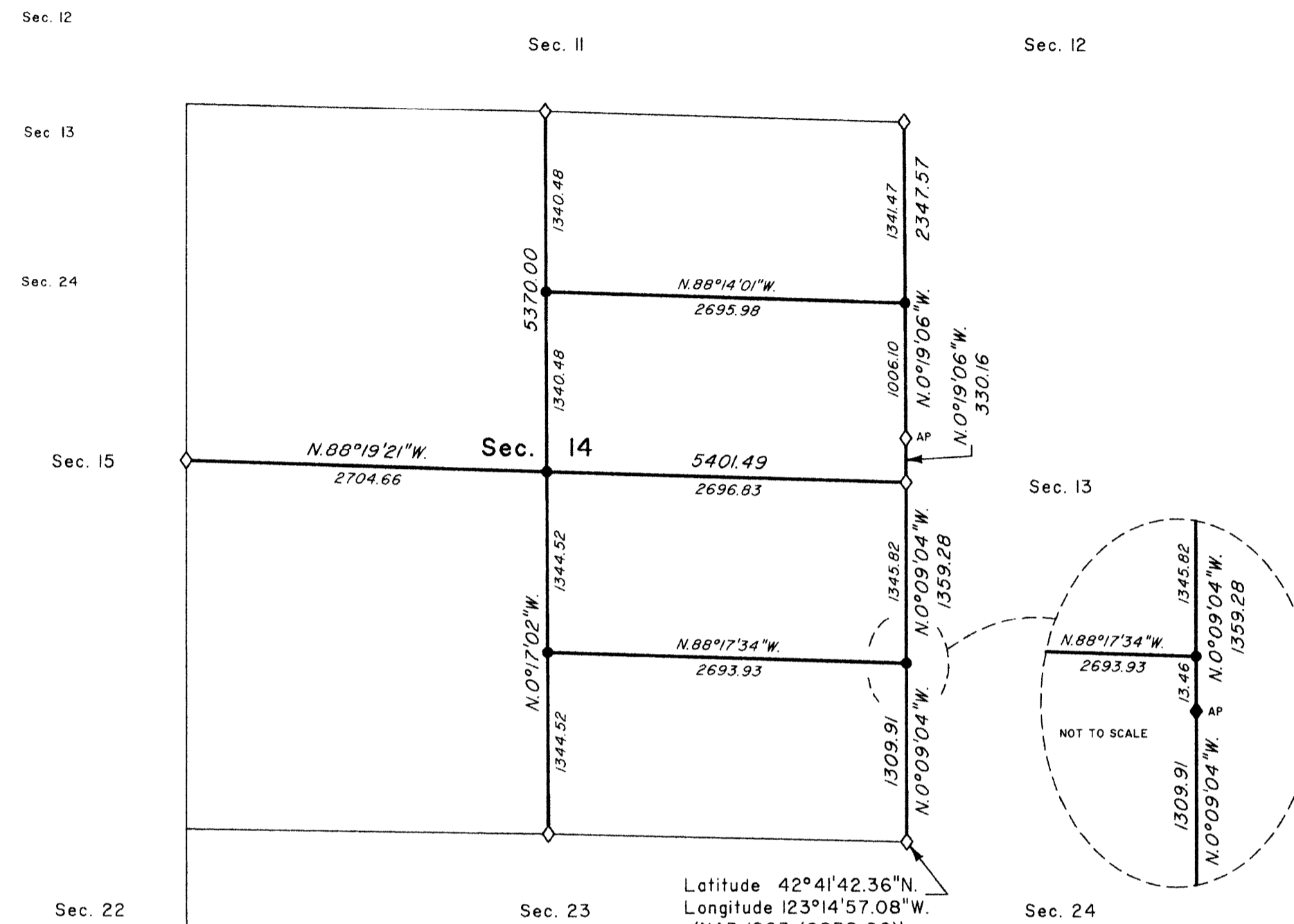
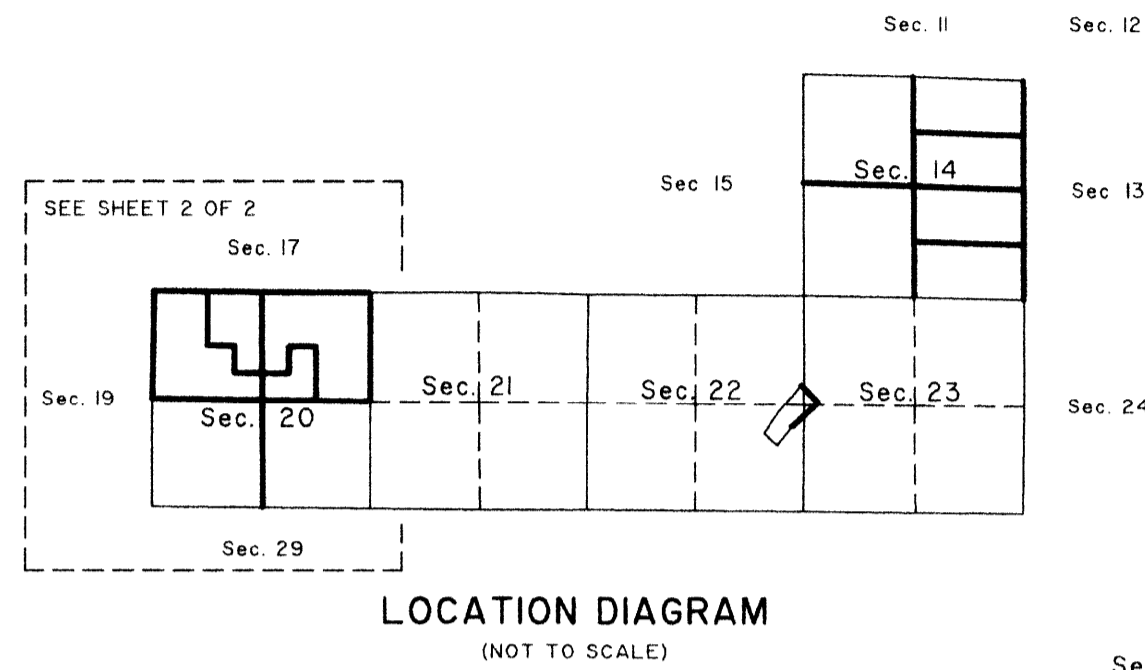
Date: 4/25/2012 By: JC
This survey consists of:
Map: PLAT 2012-1 A + B, T33-5
Narrative: VOL. 58
Corner Rpt: PAGES 22859-22886

TOWNSHIP 33 SOUTH, RANGE 5 WEST, OF THE WILLAMETTE MERIDIAN, OREGON

SHEET 1 OF 2

DEPENDENT RESURVEY AND SUBDIVISION OF SECTIONS

DOUGLAS COUNTY
SURVEYOR



A history of surveys, corner descriptions and other relevant information is contained in the field notes.

This plat represents a dependent resurvey of a portion of the subdivisional lines and certain claim lines of Mineral Survey No. 789, designed to restore the corners in their true original locations according to the best available evidence, and the subdivision of sections 14 and 20, T. 33 S., R. 5 W., Willamette Meridian, Oregon.

Official area based on the measurements of this survey have been returned for Federal interest land where indicated. Aliquot part legal subdivisions retain their aliquot part characteristics and refer to precisely the same land as which was previously identified by its original survey or description. A lot can only be subdivided by survey or supplemental plat. Except as indicated hereon, the lottings and areas are as shown on the plat approved November 10, 1894.

Survey was executed by Arthur R. Rambo, Cadastral Surveyor, beginning August 11, 2010, and completed July 14, 2011, pursuant to special instructions dated August 3, 2010, for Group Number 2346, Oregon.

LEGEND

- ◊ Original corner previously remonumented
- ◆ Original corner remonumented this survey
- Corner established this survey

UNITED STATES DEPARTMENT OF THE INTERIOR
BUREAU OF LAND MANAGEMENT

Portland, Oregon

This plat is strictly conformable to the approved field notes, and the survey, having been correctly executed in accordance with the requirements of law and the regulations of this Bureau, is hereby accepted.

For the Director

Mary J. M. Hault

Chief Cadastral Surveyor of Oregon

March 23, 2012
Date

OFFICIALLY FILED: 3/16/2012

TOWNSHIP 33 SOUTH, RANGE 5 WEST, OF THE WILLAMETTE MERIDIAN, OREGON

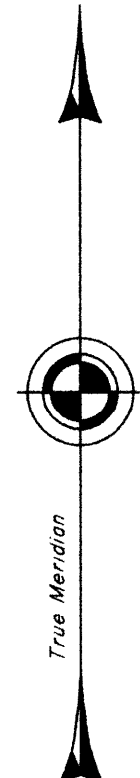
SHEET 2 OF 2

DEPENDENT RESURVEY AND SUBDIVISION OF SECTIONS

FILED
 Date: 4/25/2012 By: JC
 This survey consists of:
 Map: PLAT 2012-1 A + B, T33-5
 Narrative: VOL. 58
 Corner Rpt: PAGES 22859-22886

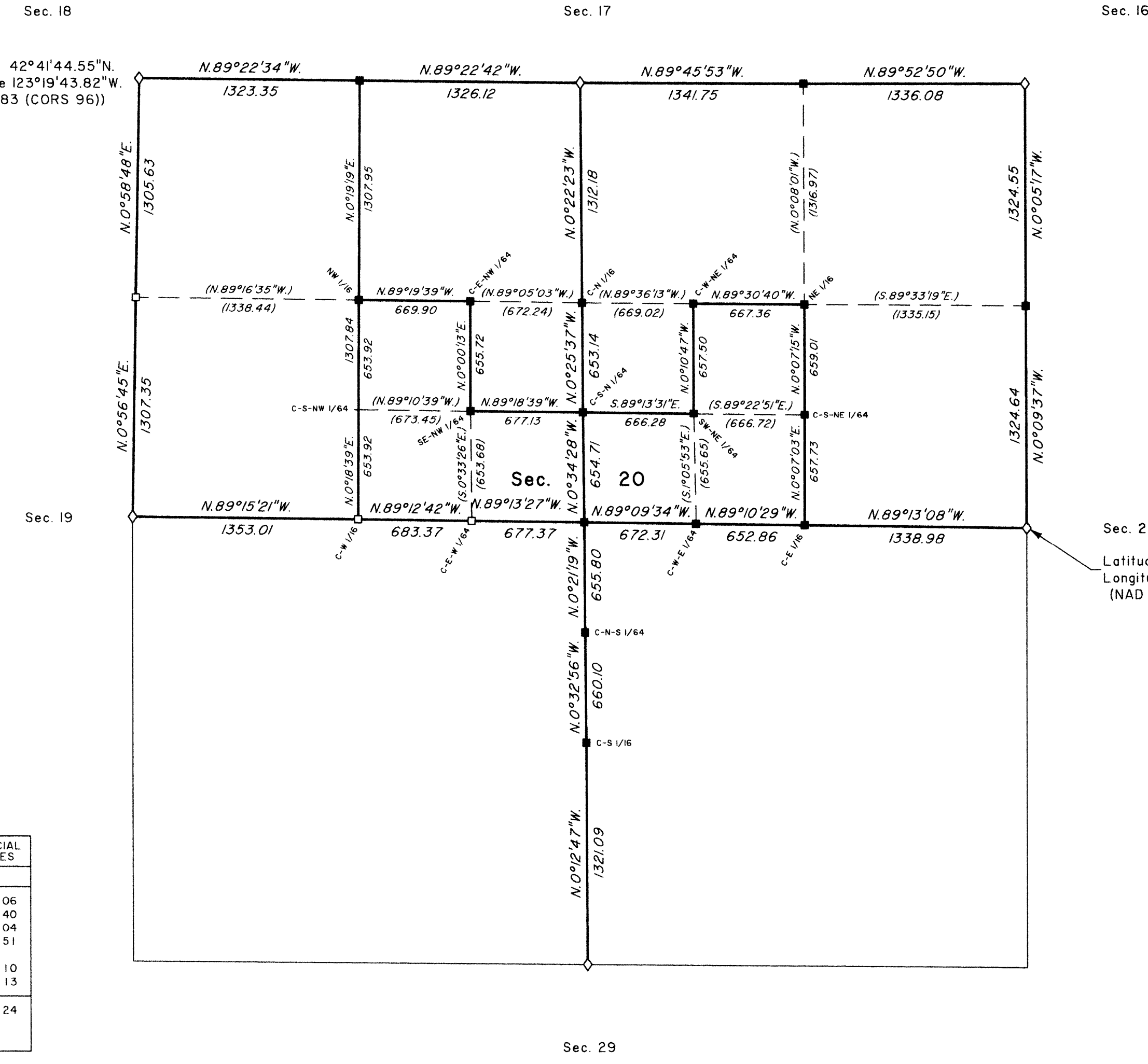
DOUGLAS COUNTY
 SURVEYOR

OFFICIALLY FILED: 3/16/2012



Latitude 42°41'44.55"N.
 Longitude 123°19'43.82"W.
 (NAD 1983 (CORS 96))

Latitude 42°41'18.02"N.
 Longitude 123°18'32.41"W.
 (NAD 1983 (CORS 96))



LEGAL SUBDIVISION	OFFICIAL ACRES
SECTION 20	
NE 1/4 NE 1/4	40.06
NW 1/4 NE 1/4	40.40
NW 1/4 SW 1/4 NE 1/4	10.04
SE 1/4 NE 1/4	40.51
NE 1/4 NW 1/4	40.10
NE 1/4 SE 1/4 NW 1/4	10.13
TOTAL AREA FEDERAL INTEREST LAND RESURVEYED	184.24

LEGEND	
◇	Original corner previously remonumented
□	Corner previously established
■	Corner previously established; remonumented this survey
+	Corner point calculated, no monument set
()	Calculated bearing and distance

UNITED STATES DEPARTMENT OF THE INTERIOR
 BUREAU OF LAND MANAGEMENT

Portland, Oregon

This plat is strictly conformable to the approved field notes, and the survey, having been correctly executed in accordance with the requirements of law and the regulations of this Bureau, is hereby accepted.

For the Director

[Signature]
 Chief Cadastral Surveyor of Oregon

Date

