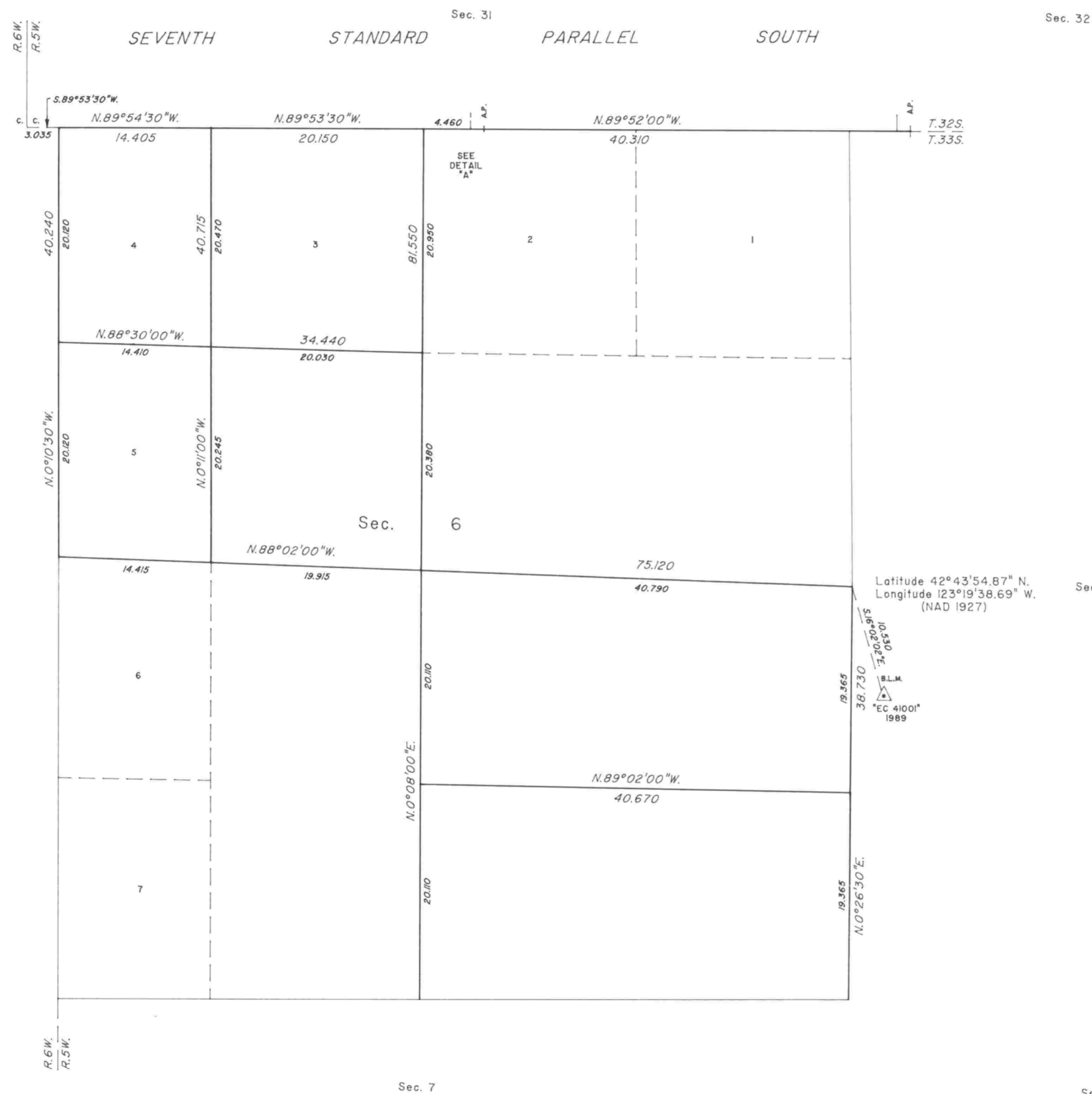


TOWNSHIP 33 SOUTH, RANGE 5 WEST, OF THE WILLAMETTE MERIDIAN, OREGON

DEPENDENT RESURVEY AND SUBDIVISION OF SECTION 6



A history of surveys is contained in the field notes.

This plat represents a dependent resurvey of a portion of the north boundary (Seventh Standard Parallel South), a portion of the west boundary and subdivisional lines, T. 33 S., R. 5 W., Willamette Meridian, Oregon, designed to restore the corners in their true original locations according to the best available evidence, and the subdivision of section 6.

The lottings and areas are as shown on the plat approved November 10, 1894.

The survey was executed by Terrence O. Nickerson, Cadastral Surveyor, beginning February 21, 1989, and completed June 6, 1992, pursuant to Special Instructions dated February 7, 1989, under Group Number 1474, Oregon.

Timber in this area consists of fir, pine, cedar, oak and madrone.

Latitude 42°43'54.87" N.
Longitude 123°19'38.69" W.
(NAD 1927)

UNITED STATES DEPARTMENT OF THE INTERIOR
BUREAU OF LAND MANAGEMENT

Portland, Oregon July 31, 1992

This plat is strictly conformable to the approved field notes, and the survey, having been correctly executed in accordance with the requirements of law and the regulations of this Bureau, is hereby accepted.

For the Director

Chief Cadastral Surveyor of Oregon