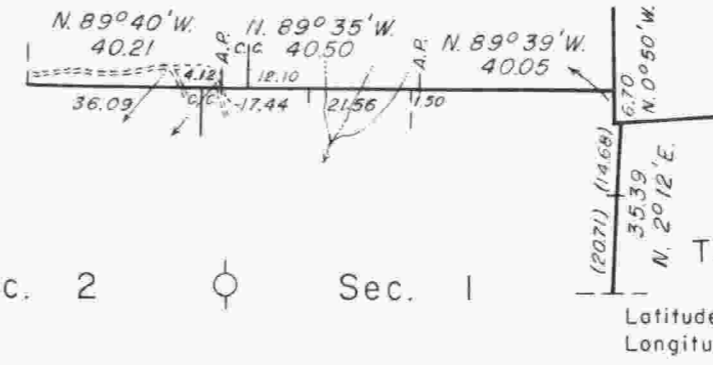


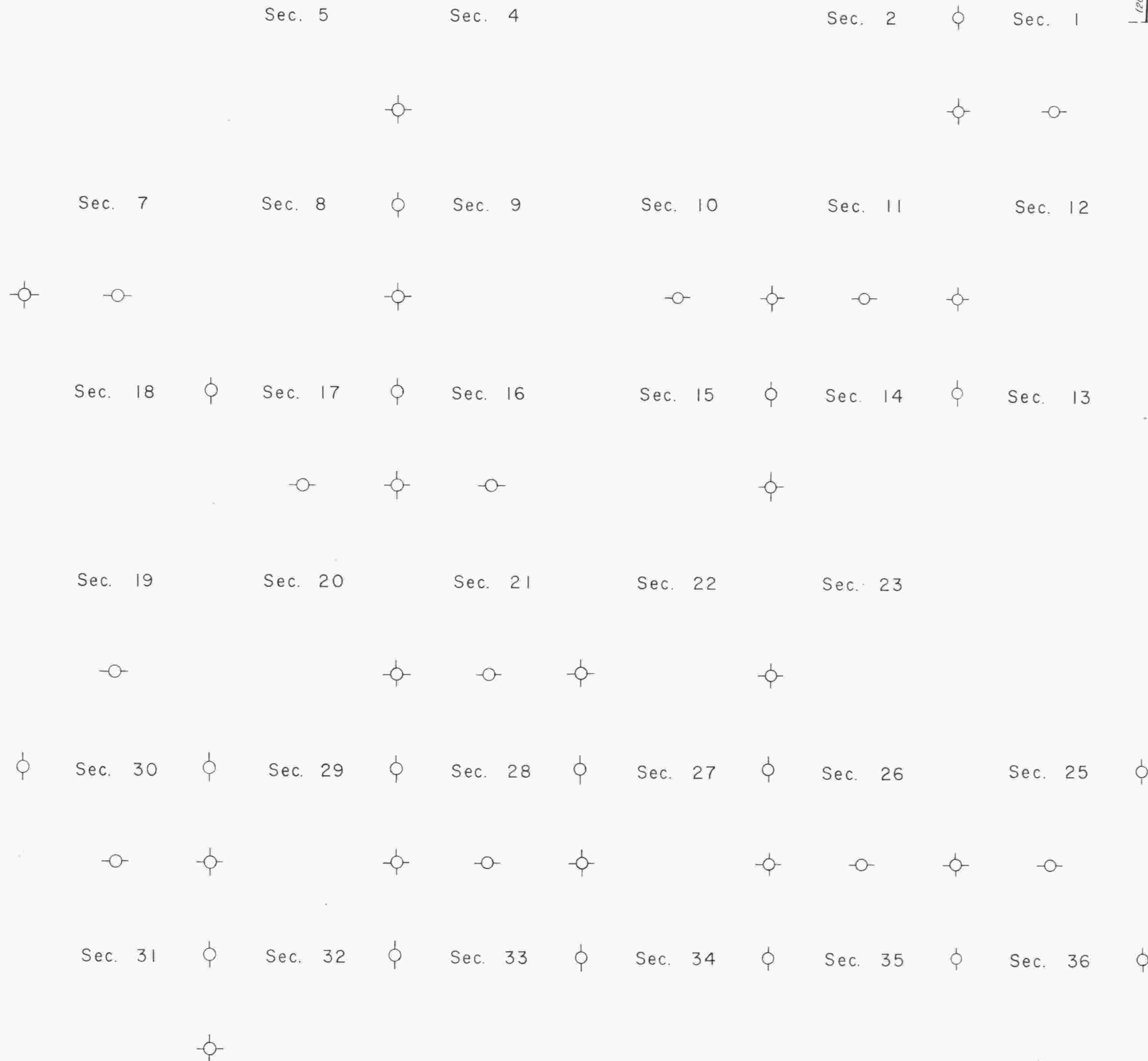
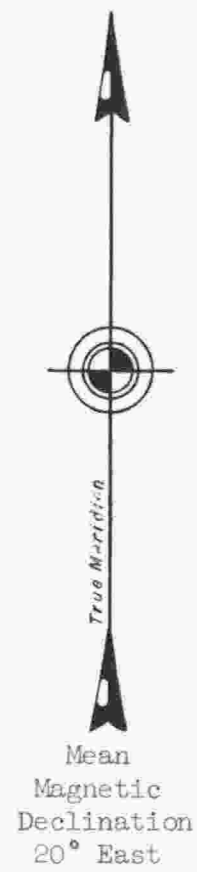
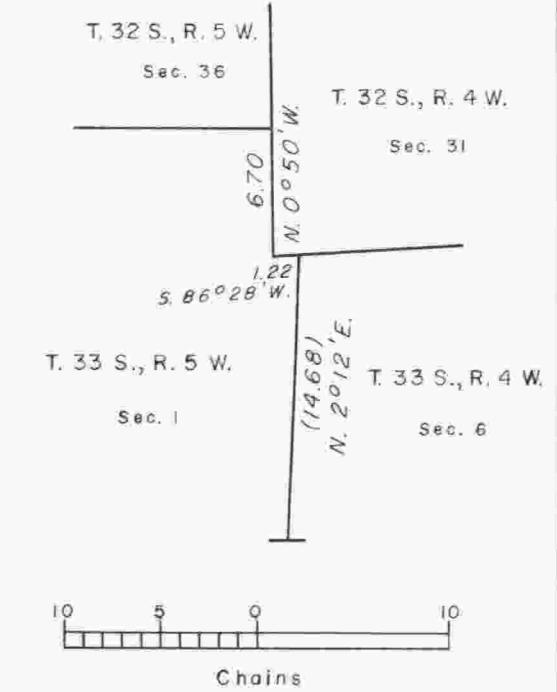
TOWNSHIP 33 SOUTH, RANGE 5 WEST, OF THE WILLAMETTE MERIDIAN, OREGON. DEPENDENT RESURVEY AND REMONUMENTATION

SEVENTH STANDARD PARALLEL SOUTH

Sec. 35 Sec. 36 Sec. 31
T. 32 S., R. 5 W. T. 32 S., R. 5 W. T. 32 S., R. 4 W.



ENLARGED DIAGRAM



This plat represents a retracement and re-establishment of a portion of the north boundary (Seventh Standard Parallel South), a portion of the east boundary, and remonumentation of certain original corner points, T. 33 S., R. 5 W., Willamette Meridian, Oregon, designed to restore the corners in their true original locations based on the best available evidence.

The north boundary (Seventh Standard Parallel South), was surveyed by Ives and Hyde in 1854. The east boundary of section 1 was surveyed and the north boundary of section 1 retraced by Edward F. Sharp in 1894. The south boundary of section 36, T. 32 S., R. 5 W., was resurveyed by Oscar F. Thiel in 1904. A portion of the east boundary of section 1 was retraced by Winfield Chapman and Carl Nicklin in 1897.

The resurvey and remonumentation were executed by Joseph S. Gawron, John M. Jelley, and Rollin D. Aanrud, Cadastral Surveyors, March 1, 1965, to December 1, 1967, under Special Instructions dated May 3, 1957, and December 10, 1964, which provide for the surveys included under Group Nos. 350 and 566, Oregon.

✦ Corner remonumentation performed under Group No. 350 in 1966-67.

UNITED STATES DEPARTMENT OF THE INTERIOR
BUREAU OF LAND MANAGEMENT
Washington, D. C. August 1, 1968

This plat is strictly conformable to the approved field notes, and the survey, having been correctly executed in accordance with the requirements of law and the regulations of this Bureau, is hereby accepted.

For the Director
R. E. Brown
Chief, Division of Engineering

Timber in this area consists of Douglas fir, white fir, ponderosa pine, and incense cedar.

