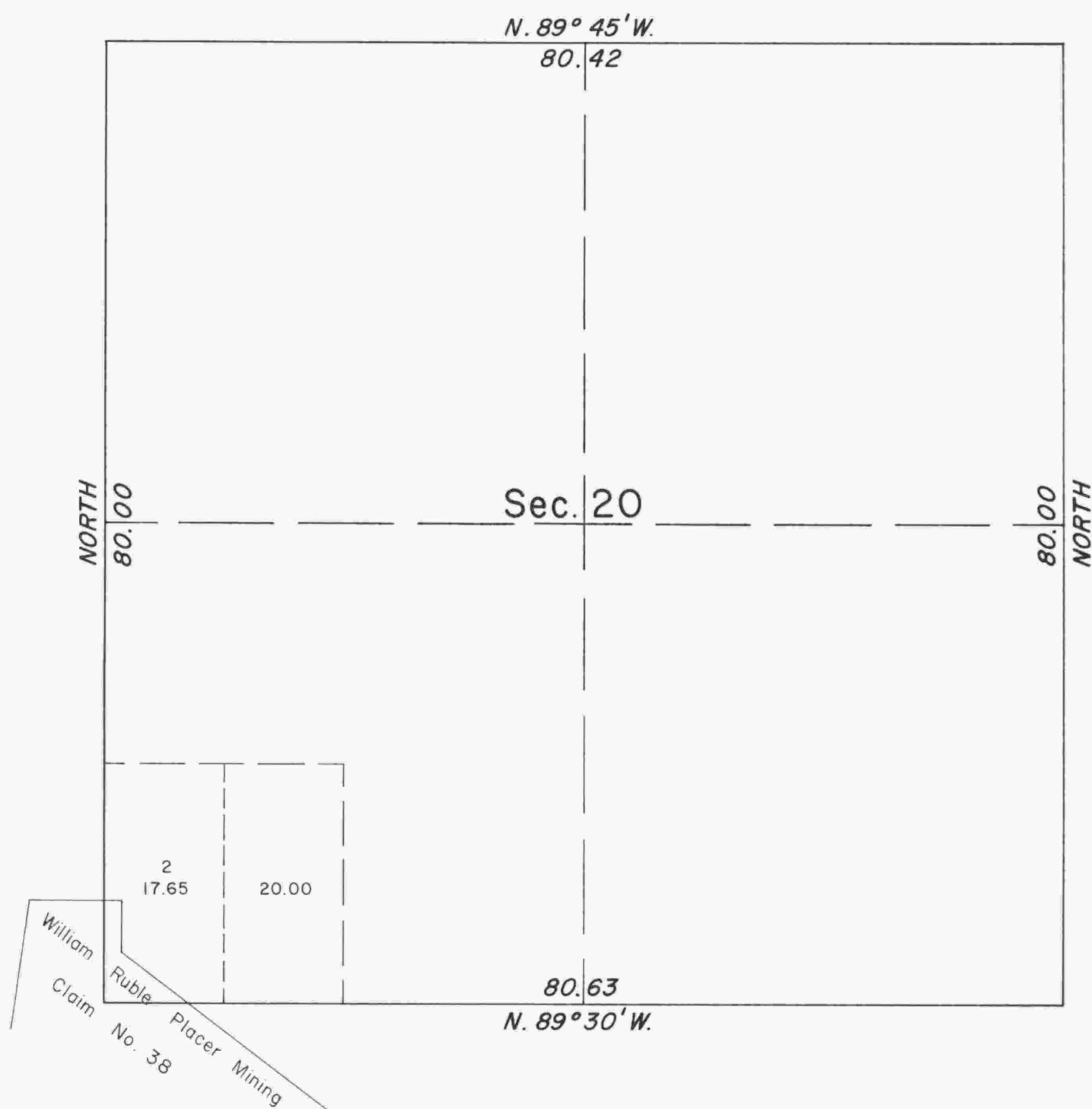


TOWNSHIP 33 SOUTH, RANGE 5 WEST, OF THE WILLAMETTE MERIDIAN, OREGON. SUPPLEMENTAL PLAT



This plat showing a subdivision of Lot 1, Section 20, T. 33 S., R. 5 W., W.M., Oregon, is based upon the plat approved November 10, 1894.

UNITED STATES DEPARTMENT OF THE INTERIOR
BUREAU OF LAND MANAGEMENT
Washington, D.C. October 21, 1957

This plat, showing amended lottings, is based upon the official records, and having been correctly prepared in accordance with the regulations, is hereby accepted.

For the Director
Earl G. Harrington
Cadastral Engineering Staff Officer