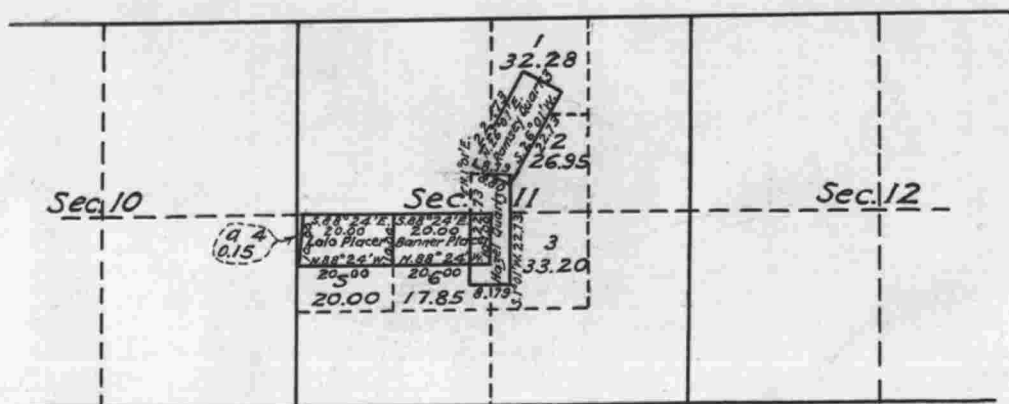


Township No. 33 South, Range No. 5 West of the Willamette Meridian, Oregon.



The above Tracing showing change in areas and lottings in Section 11, Tp. 33 S., R. 5 W., Will. Mer., Oregon, consequent upon plating segregation surveys made by A. C. Mc. Donald under instructions contained in Commissioner's Letters "N" dated April 14, 1897, April 16, 1897 and December 24, 1897, to the Register and Receiver of the U.S. Land Office at Roseburg, Oregon, is strictly conformable to the field notes of the survey thereof on file in this Office, which have been examined and approved and that it properly describes the land to be segregated in accordance with Commissioner's Letter "N" dated November 27, 1897.
Surveyor General's Office,
Portland, Oregon, Aug. 13, 1898.

(signed) Robert A. Habersham.
Surr. Genl. for Oregon.

See Book No. 43
Mineral Surveys
p-76-112

I certify the above to be a correct copy of the original tracing on file in this office.
Office of District Cadastral Engineer,
Portland, Oregon, December 15, 1925.

John W. Rowland
Office Cadastral Engineer.