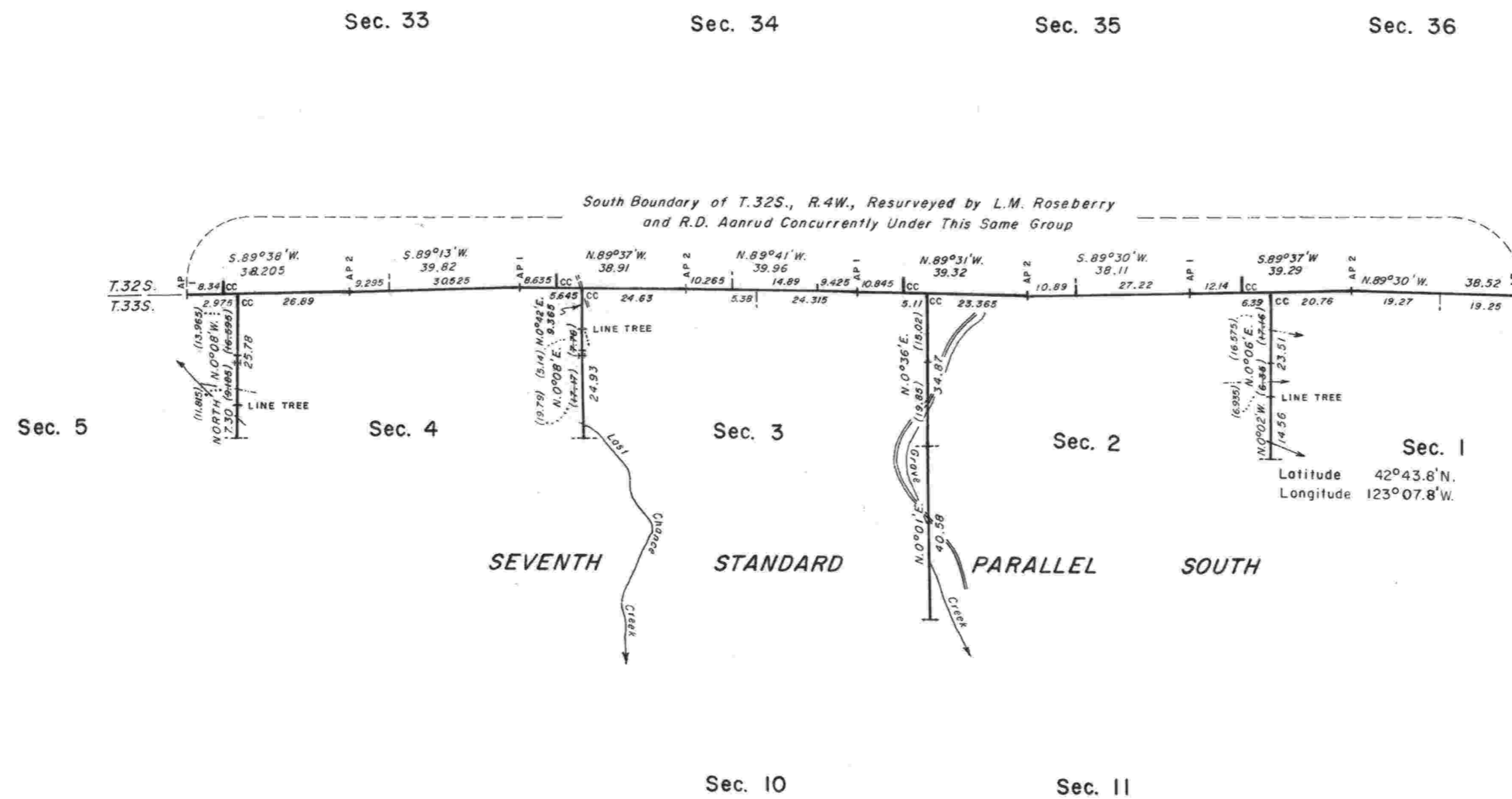
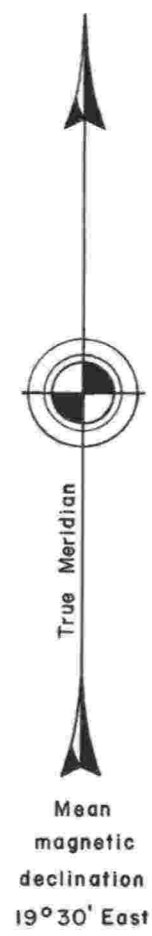


TOWNSHIP 33 SOUTH, RANGE 4 WEST, OF THE WILLAMETTE MERIDIAN, OREGON.
DEPENDENT RESURVEY



A history of surveys is contained in the field notes.

This plat represents a dependent resurvey of a portion of the subdivisional lines, T. 33 S., R. 4 W., designed to restore the corners in their true original location according to the best available evidence.

The lottings and areas are as shown on the plat approved July 26, 1894.

The resurvey was executed by Lynn M. Roseberry and Rollin D. Aanrud, Cadastral Surveyors, from July 28, 1975, to September 29, 1975, under Special Instructions dated May 21, 1975, which provide for the surveys included under Group Number 865.

Timber in this area consists of fir, cedar, pine, hemlock, madrone, chinquapin, alder, maple, yew, and dogwood.

UNITED STATES DEPARTMENT OF THE INTERIOR
BUREAU OF LAND MANAGEMENT
Portland, Oregon May 21, 1982

This plat is strictly conformable to the approved field notes, and the survey, having been correctly executed in accordance with the requirements of law and the regulations of this Bureau, is hereby accepted.

For the Director

William W. Glenn

Chief Cadastral Surveyor of Oregon

"Corrections to parenthetical distances on lines between sections 1 and 2, 3 and 4, and 4 and 5 authorized by memorandum dated April 15, 1983, see File 9622.1 (942) Group 865, Oregon."

