

Date: 8/31/2016 By: JC  
 This survey consists of:  
 Map: T32S R08W 2016-1  
 Narrative: VOL. 58  
 Corner Rpt: Pgs 23364-23383

TOWNSHIP 32 SOUTH, RANGE 8 WEST, OF THE WILLAMETTE MERIDIAN, OREGON

DEPENDENT RESURVEY AND SUBDIVISION OF SECTIONS 1 AND 2

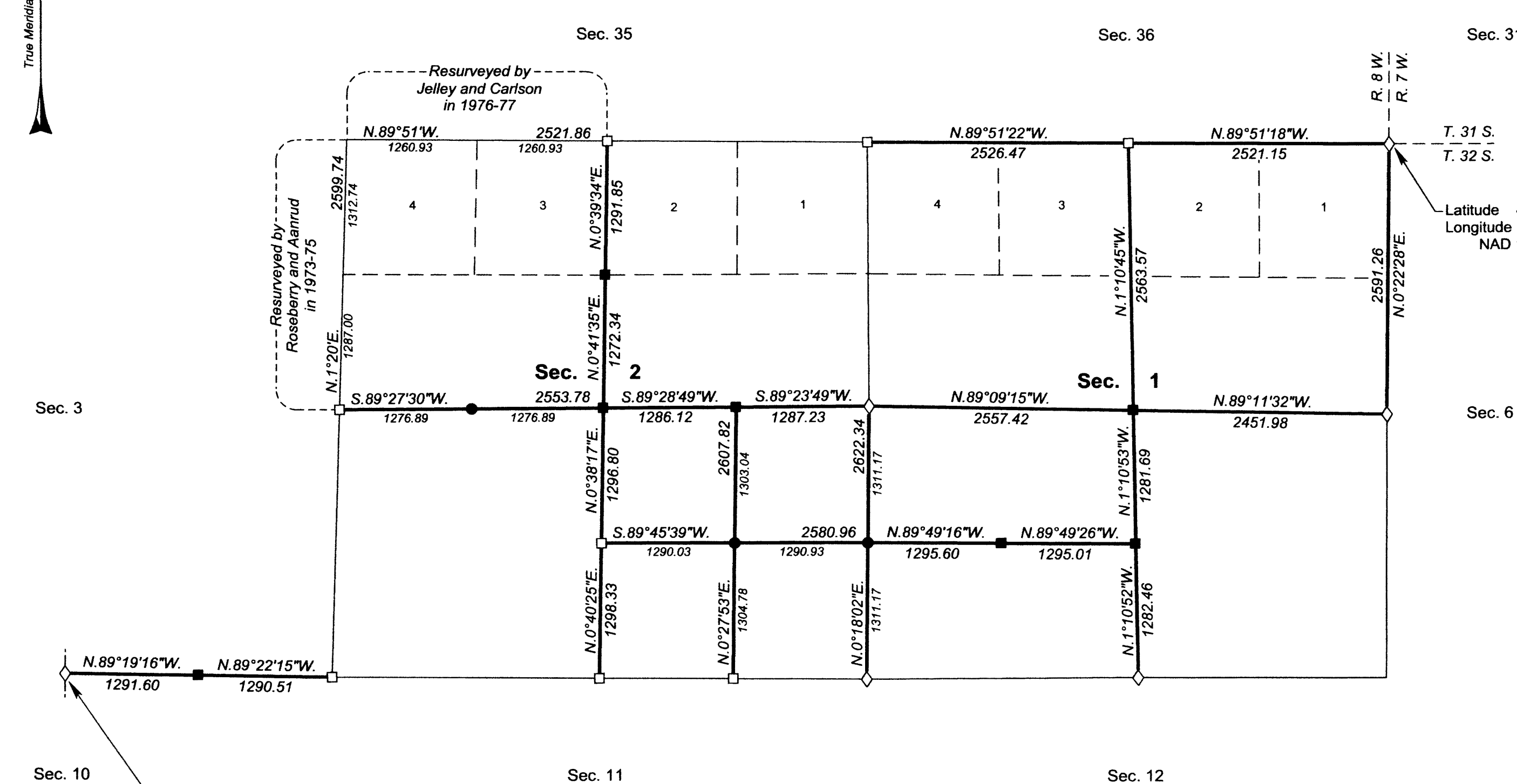
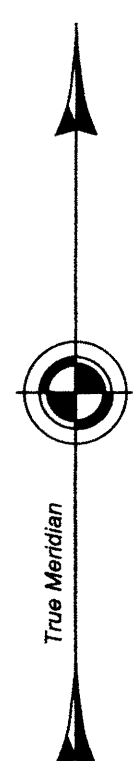
DOUGLAS COUNTY  
 SURVEYOR

A history of surveys, corner descriptions, and other relevant information are contained in the field notes.

This plat represents the dependent resurvey of a portion of the east and north boundaries, a portion of the subdivisional lines, designed to restore the corners in their true original locations according to the best available evidence, and the subdivision of sections 1 and 2, Township 32 South, Range 8 West, Willamette Meridian, Oregon.

Official areas based on the measurements of this survey have been returned for Federal interest land where indicated. Aliquot part legal subdivisions retain their aliquot characteristics and refer to precisely the same land as that which was previously identified by its original survey or description. A lot can only be subdivided by survey or supplemental plat. Except as indicated hereon, the lottings and areas are as shown on the plat approved in October 5, 1882.

Survey executed by Richard J. Dieckmann and Brandon G. Courtright, Cadastral Surveyors, beginning May 8, 2014, and completed July 23, 2014, pursuant to special instructions approved April 22, 2014, for Group No. 2754, Oregon.



Latitude 42°49'29.98"N.  
 Longitude 123°35'03.65"W.  
 NAD 1983 (2011)

Latitude 42°48'39.53"N.  
 Longitude 123°37'55.32"W.  
 NAD 1983 (2011)

LEGAL SUBDIVISION	OFFICIAL ACRES
SECTION 1	
LOT 1	37.16
LOT 2	37.00
SW1/4 NE1/4	36.35
SE1/4 NE1/4	35.60
NE1/4 SW1/4	38.07
NW1/4 SW1/4	38.52
SECTION 2	
SE1/4 NW1/4	37.28
NE1/4 SE1/4	38.68
TOTAL AREA	298.66
FEDERAL INTEREST LAND RESURVEYED IN SECTIONS 1 AND 2	

LEGEND	
◇	Original corner previously remonumented
□	Corner previously established or reestablished
■	Corner previously established or reestablished; remonumented this survey
●	Corner established or reestablished this survey

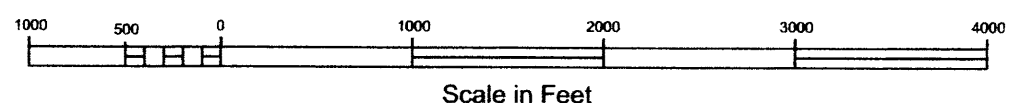
UNITED STATES DEPARTMENT OF THE INTERIOR  
 BUREAU OF LAND MANAGEMENT

Portland, Oregon

This plat is strictly conformable to the approved field notes, and the survey, having been correctly executed in accordance with the requirements of law and the regulations of this Bureau, is hereby accepted.

For the Director  
*Mary M. Hartzel*  
 Chief Cadastral Surveyor of Oregon

*June 17, 2016*  
 Date



OFFICIALLY FILED: 8/29/2016