

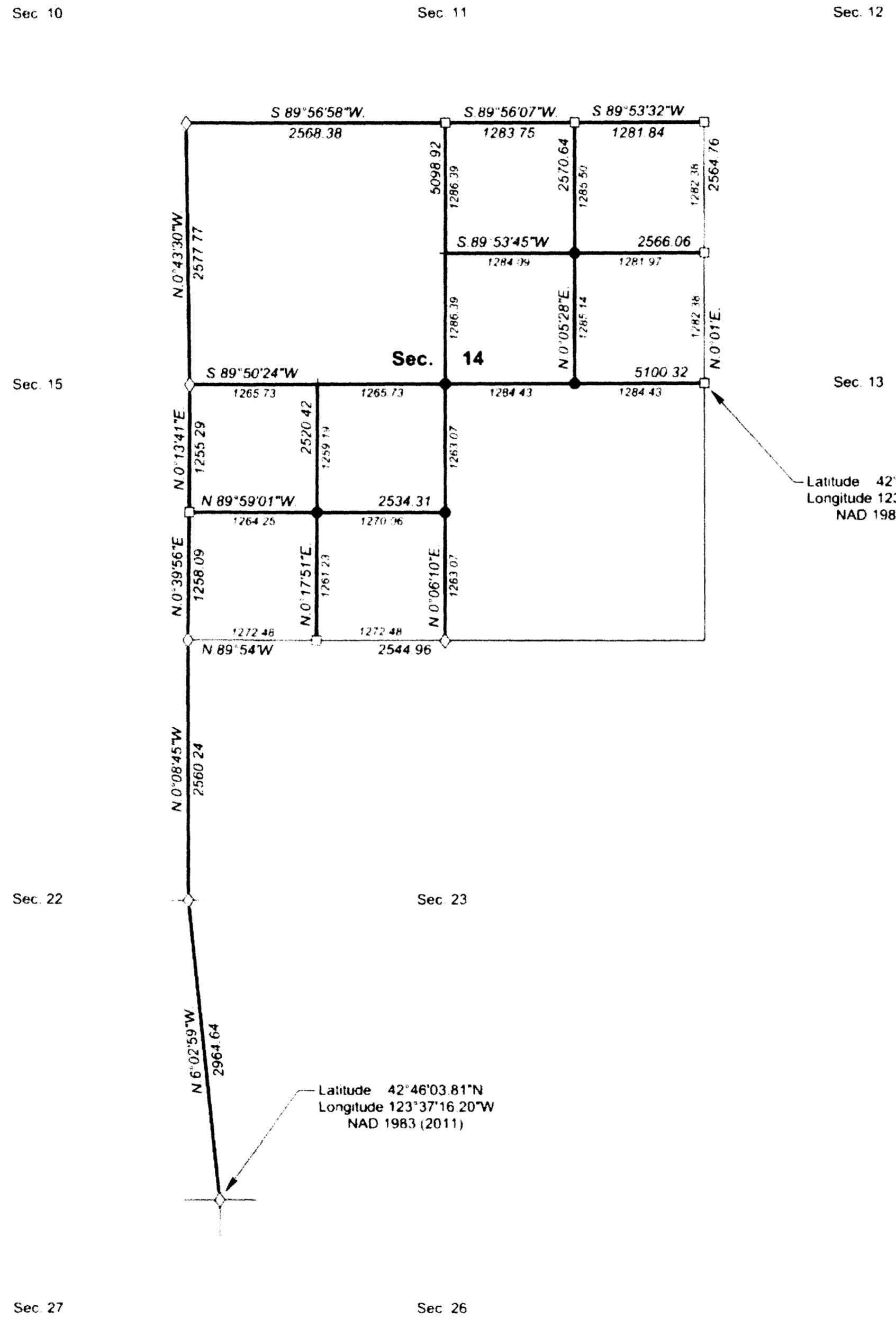
TOWNSHIP 32 SOUTH, RANGE 8 WEST, OF THE WILLAMETTE MERIDIAN, OREGON

DEPENDENT RESURVEY AND SUBDIVISION OF SECTION 14

FILED

Date: 11/9/2015 By: JC
This survey consists of:
Map: T32-8W 2015-1
Narrative: VOL. 58 PAGES
Corner Rpt. 23256-23265

DOUGLAS COUNTY
SURVEYOR



A history of surveys, corner descriptions, and other relevant information are contained in the field notes.

This plat represents the dependent resurvey of a portion of the subdivisional lines, designed to restore the corners in their true original locations according to the best available evidence, and the subdivision of section 14, Township 32 South, Range 8 West, Willamette Meridian, Oregon.

Official areas based on the measurements of this survey have been returned for Federal interest land where indicated. Aliquot part legal subdivisions retain their aliquot characteristics and refer to precisely the same land as that which was previously identified by its original survey or description or supplemental plat. Except as indicated hereon, the lottings and areas are as shown on the plat approved November 8, 1883.

Survey executed by Kevin G. Mulder, Cadastral Surveyor, beginning March 17, 2014, and completed April 21, 2014, pursuant to special instructions approved March 10, 2014, for Group No. 2741, Oregon.

LEGAL SUBDIVISION	OFFICIAL ACRES
SECTION 14	
SE 1/4 NE 1/4	37.84
SE 1/4 SW 1/4	36.86
TOTAL AREA	74.70
FEDERAL INTEREST LAND RESURVEYED	

NOTE:
The lightweight lines with bearings and distances shown were surveyed by Lynn M. Roseberry and Rollin D. Aanrud in 1973-75, and were utilized to calculate the areas of the Federal interest land in section 14.

LEGEND	
◊	Original corner previously remonumented
□	Corner previously established or reestablished
●	Corner established this survey
+	Corner point calculated, no monument set

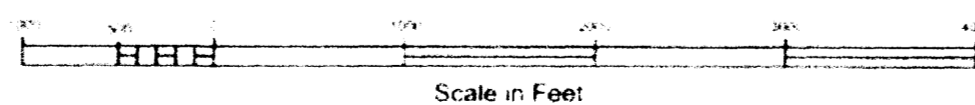
UNITED STATES DEPARTMENT OF THE INTERIOR
BUREAU OF LAND MANAGEMENT

Portland, Oregon

This plat is strictly conformable to the approved field notes, and the survey, having been correctly executed in accordance with the requirements of law and the regulations of this Bureau, is hereby accepted.

For the Director
Mary J. M. Hartzel
Chief Cadastral Surveyor of Oregon

August 5, 2015
Date



OFFICIALLY FILED: 10/6/2015