

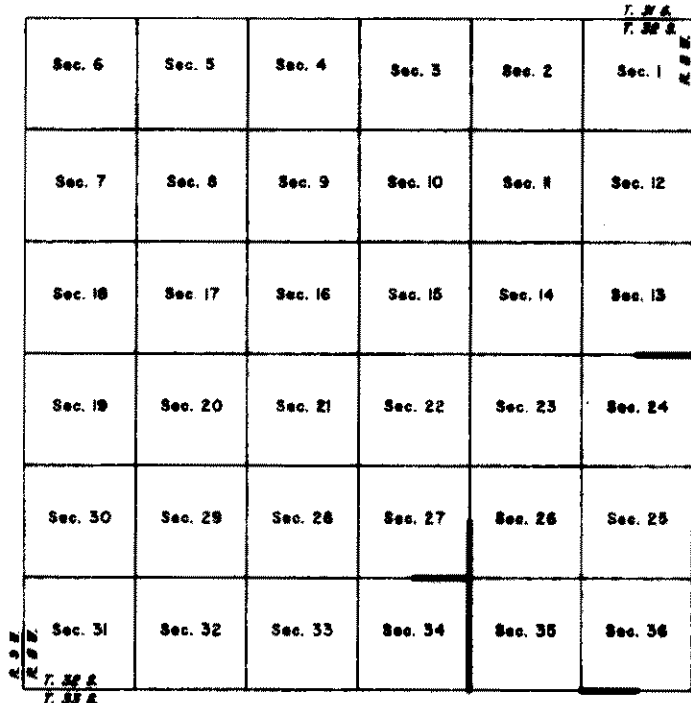
# TOWNSHIP 32 SOUTH, RANGE 8 WEST, OF THE WILLAMETTE MERIDIAN, OREGON

## DEPENDENT RESURVEY

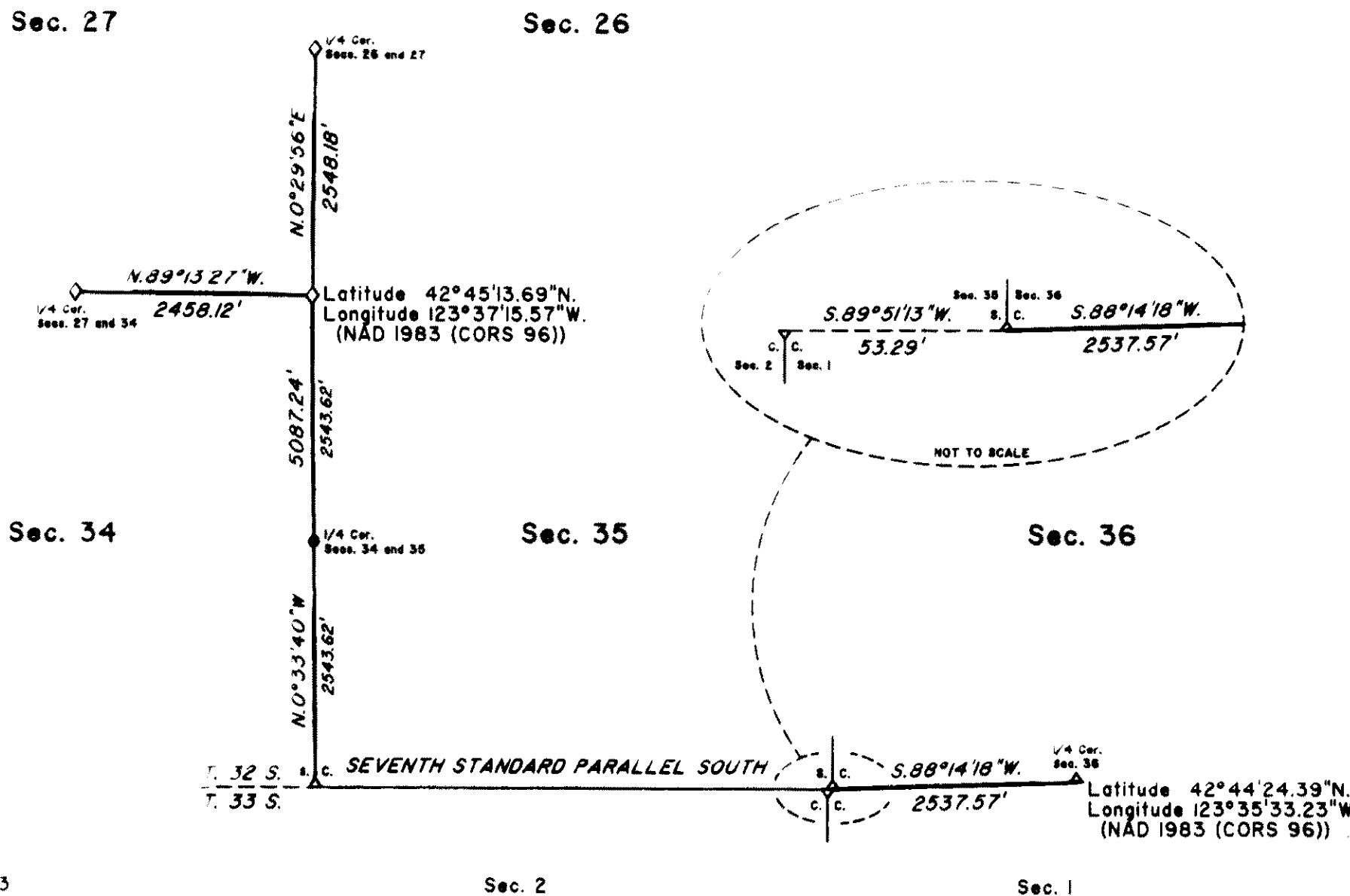
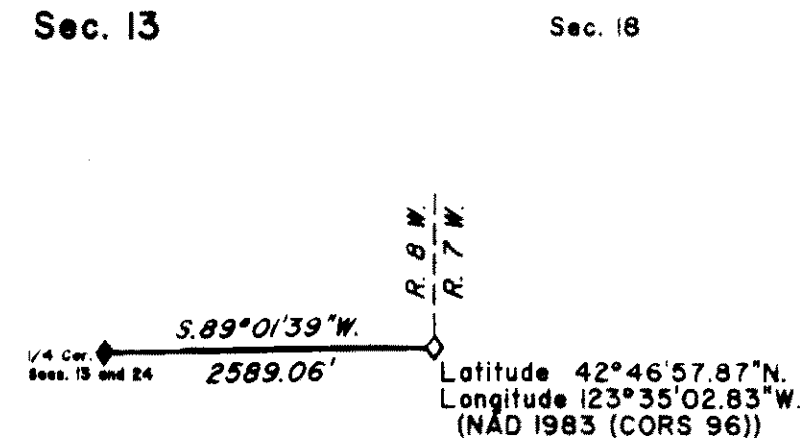
FILED

Date: 3/3/2009 By: JC  
This survey consists of:  
Map AND BLM LINE NOTES  
Narrative: VOL. 55  
Corner Rpt: PAGES 21608-17

DOUGLAS COUNTY  
SURVEYOR



LOCATION DIAGRAM  
(NOT TO SCALE)



A history of surveys is contained in the field notes.

This plat represents a dependent resurvey of portion of the south boundary (Seventh Standard Parallel South) and subdivisional lines, T. 32 S., R. 8 W., Willamette Meridian, Oregon, designed to restore the corners in their true original locations according to the best available evidence.

Measured distances and directions have been adjusted by computer software that incorporates a least squares adjustment routine. The adjusted bearings and distances are reported to the nearest second and 0.01 foot.

The lottings and areas are as shown on the plat approved November 8, 1883.

The survey was executed by Arthur R. Rambo, Cadastral Surveyor, beginning July 17, 2007, and completed November 1, 2007, pursuant to Special Instructions dated June 20, 2007, under Group Number 2179, Oregon.

### LEGEND

- ◊ Original corner previously remonumented
- ◆ Original corner remonumented this survey
- Corner established or reestablished this survey

UNITED STATES DEPARTMENT OF THE INTERIOR  
BUREAU OF LAND MANAGEMENT

Portland, Oregon

This survey is strictly conformable to the approved field notes, and the survey, having been correctly executed in accordance with the requirements of law and the regulations of this Bureau, is hereby accepted.

For the Director

*John P. Rambo*, Acting  
Chief Cadastral Surveyor of Oregon

December 18, 2008  
Date

